

LAS VEGAS, NEVADA

TACAN X RWY 21L

TACAN LSV Chan 12	APCH CRS 210°
-------------------	---------------

Rwy Idg	21L 10,051	21R 10,120
TDZE	1865	1869
Arprt Elev	1869	

AL-227 (USAF)

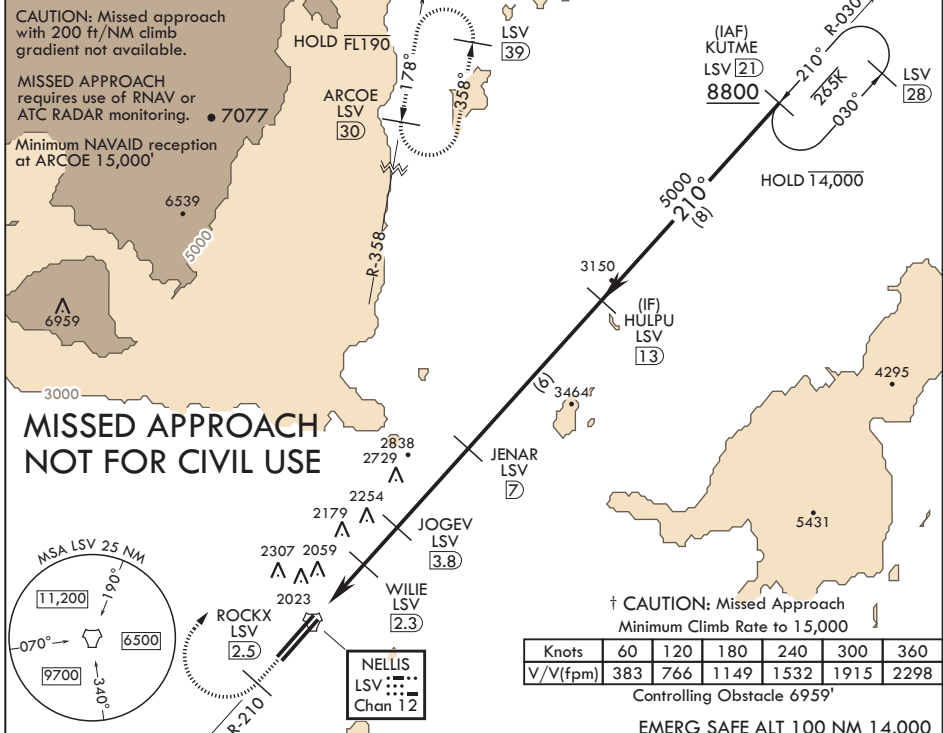
NELLIS AFB (KLSV)

▼ * When ALS inop, increase CAT AB RVR to 55, vis to 1 mile, CAT CDE vis to 1 3/4 miles.
 ** Circling not authorized E of Rwy 3R-21L.



† MISSED APPROACH: Climb to 15,000, intercept LSV TACAN R-210 to 2.5 DME (ROCKX), then climbing right turn heading 028° to join LSV R-358 to ARCOE and hold. Missed approach not for civil use.

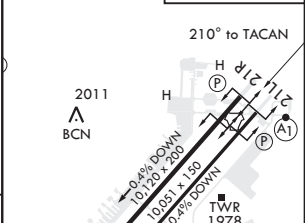
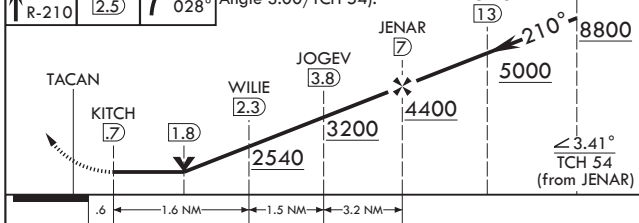
ATIS 270.1	APP CON 124.95 273.55	TOWER 132.55 327.0	GND CON 121.8 275.8	CLNC DEL 120.9 289.4
------------	-----------------------	--------------------	---------------------	----------------------



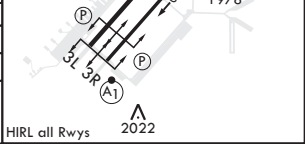
SW-4, 11 AUG 2022 to 08 SEP 2022

SW-4, 11 AUG 2022 to 08 SEP 2022

15,000 LSV R-210	ROCKX LSV (2.5)	↑ hdg 028°	VGSI and descent angles not coincident (VGSI Angle 3.00/TCH 54).	KUTME (21)	ELEV 1869	TDZE 21L 1865	TDZE 21R 1869
------------------	-----------------	------------	--	------------	-----------	---------------	---------------



CATEGORY	A	B	C	D	E
S-21L*	2460/24	595 (600-½)	2460-1¼	595 (600-1¼)	
SIDESTEP 21R	2460-1	591 (600-1)	2460-1¼	591 (600-1¼)	
☐ CIRCLING**	2460-1 591 (600-1)	2620-1 751 (800-1)	2620-2¼ 751 (800-2¼)	2840-3 971 (1000-3)	3040-3 1171 (1200-3)



LAS VEGAS, NEVADA
 Amdt 9 22APR21

36°14'N - 115°02'W

NELLIS AFB (KLSV)

TACAN X RWY 21L