

LOC/DME I-MHT 109.1 Chan 28	APP CRS 352°	Rwy Idg 7650 TDZE 265 Apt Elev 266
--	------------------------	---

ILS RWY 35 (SA CAT I)

MANCHESTER BOSTON RGNL (MHT)

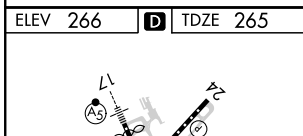
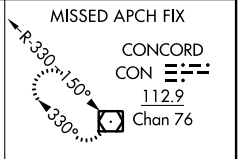
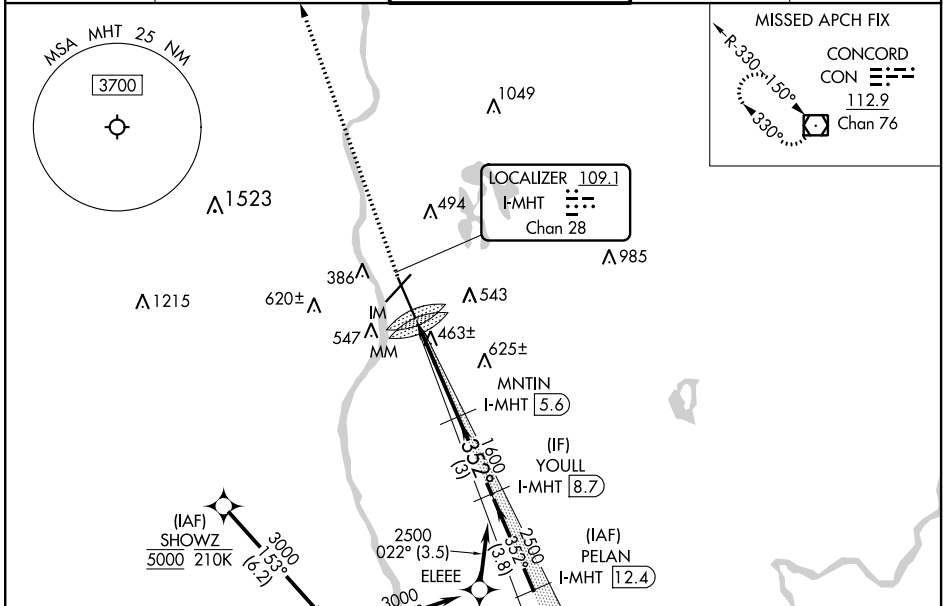
From SHOWWZ: RNAV 1-DME/DME/IRU or GPS required.
DME or RADAR required.

▼ Rwy 35 helicopter visibility reduction below RVR 4000 NA.
▲ Requires specific OPSPEC, MSPEC, or LOA approval and use of HUD to DH.

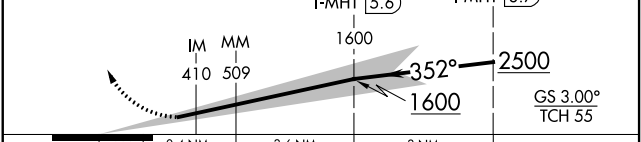
ALSF-2

MISSED APPROACH: Climb to 4000 direct CON VOR/DME and hold.

ATIS 119.55	BOSTON APP CON 124.9 269.075	MANCHESTER TOWER 121.3 239.025	GND CON 121.9	CLNC DEL 135.9
-----------------------	--	--	-------------------------	--------------------------



4000 CON VGS I and ILS glidepath not coincident (VGS I Angle 3.00/TCH 68).



CATEGORY	A	B	C	D
S-ILS 35	RA 138/14 150 DA 415			

SA CATEGORY I ILS - SPECIAL AIRCREW & AIRCRAFT CERTIFICATION REQUIRED

REIL Rwy 6 and 24
TDZ/CL Rwy 17 and 35
HIRL Rwy 6-24 and 17-35

NE-1, 11 AUG 2022 to 08 SEP 2022

NE-1, 11 AUG 2022 to 08 SEP 2022