

LOC/DME I-MHT 109.1 Chan 28	APP CRS 352°	Rwy Idg 7650 TDZE 265 Apt Elev 266
------------------------------------------	------------------------	---------------------------------------------------------------

ILS or LOC RWY 35

MANCHESTER BOSTON RGNL (MHT)

From SHOWZ: RNAV 1-DME/DME/IRU or GPS required.
DME or RADAR required.

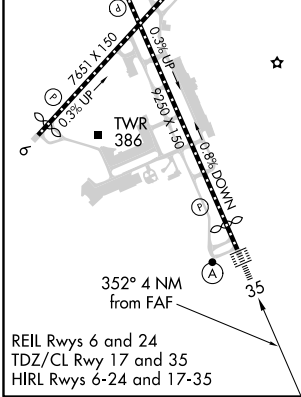
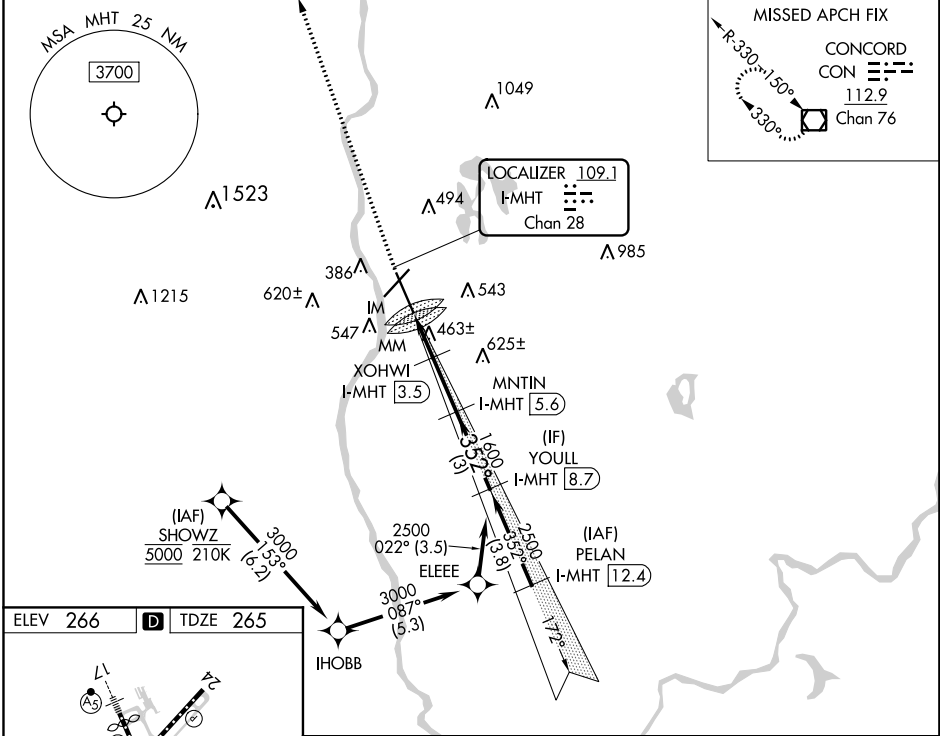
ALSIF-2

MISSED APPROACH: Climb to 4000 direct CON VOR/DME and hold.

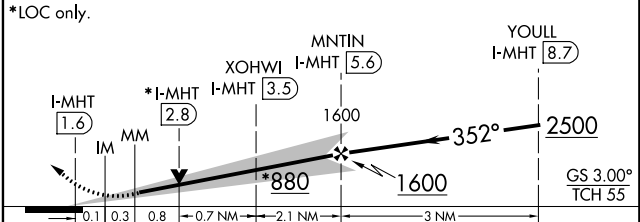
▼ Rwy 35 helicopter visibility reduction below RVR 4000 NA.
▲ For inop ALS, increase S-LOC 35 Cats A/B visibility to RVR 5500.



ATIS 119.55	BOSTON APP CON 124.9 269.075	MANCHESTER TOWER 121.3 239.025	GND CON 121.9	CLNC DEL 135.9
-----------------------	----------------------------------------	------------------------------------------	-------------------------	--------------------------



4000 CON VGSI and ILS glidepath not coincident (VGSI Angle 3.00/TCH 68).
Use I-MHT DME when on the localizer course.



CATEGORY	A	B	C	D
S-ILS 35	465/18 200 (200-½)			
S-LOC 35	720/40	455 (500-¾)	720/45	455 (500-¾)

NE-1, 11 AUG 2022 to 08 SEP 2022

NE-1, 11 AUG 2022 to 08 SEP 2022