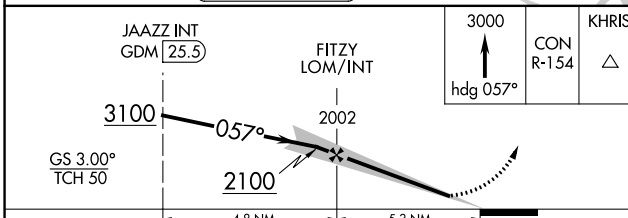
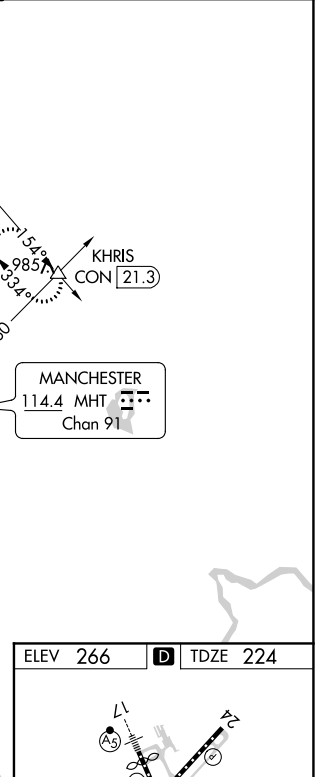
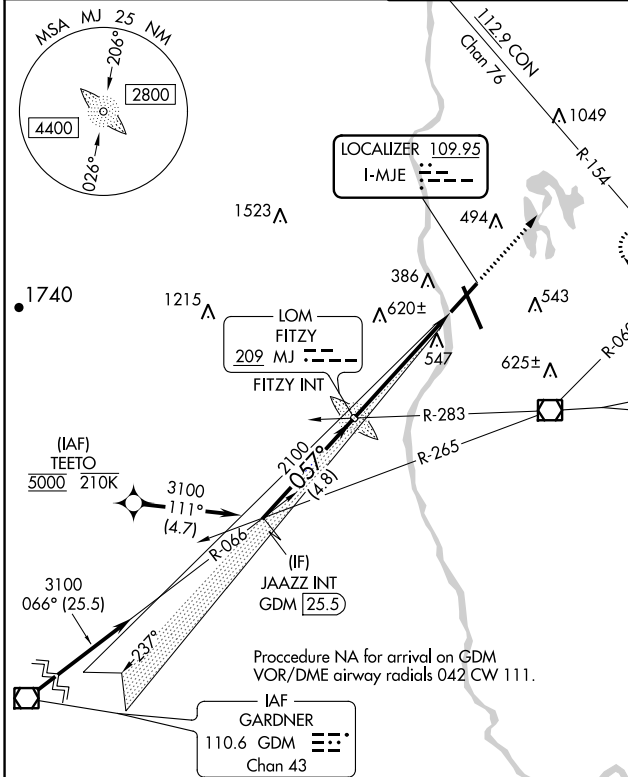


LOC I-MJE <b>109.95</b>	APP CRS <b>057°</b>	Rwy Idg <b>7208</b> TDZE <b>224</b> Apt Elev <b>266</b>
----------------------------	------------------------	---------------------------------------------------------------

**ILS or LOC RWY 6**  
MANCHESTER BOSTON RGNL (MHT)

From TEETO: RNAV 1-DME/DME/IRU or GPS required.		MISSED APPROACH: Climb to 3000 on heading 057° and CON VOR/DME R-154 to KHRIS INT/CON 21.3 DME and hold, continue climb-in-hold to 3000.		
ATIS <b>119.55</b>	BOSTON APP CON <b>124.9 269.075</b>	MANCHESTER TOWER <b>121.3 239.025</b>	GND CON <b>121.9</b>	CLNC DEL <b>135.9</b>



CATEGORY	A	B	C	D
S-ILS 6	474/40		250 (300-¾)	
S-LOC 6	840/55	616 (600-1)	840-1¾	616 (600-1¾)
<b>C</b> CIRCLING	880-1	614 (700-1)	980-2 714 (800-2)	1100-2¾ 834 (900-2¾)

ELEV 266	<b>D</b> TDZE 224
REIL Rwy 6 and 24 TDZ/CL Rwy 17 and 35 HIRL Rwy 6-24 and 17-35 FAF to MAP 5.3 NM	
Knots	60 90 120 150 180
Min:Sec	5:18 3:32 2:39 2:07 1:46

NE-1, 11 AUG 2022 to 08 SEP 2022

NE-1, 11 AUG 2022 to 08 SEP 2022