

APP CRS	Rwy Idg	7650
352°	TDZE	265
	Apt Elev	266

RNAV (RNP) Z RWY 35

MANCHESTER BOSTON RGNL (MHT)

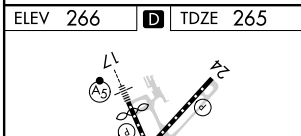
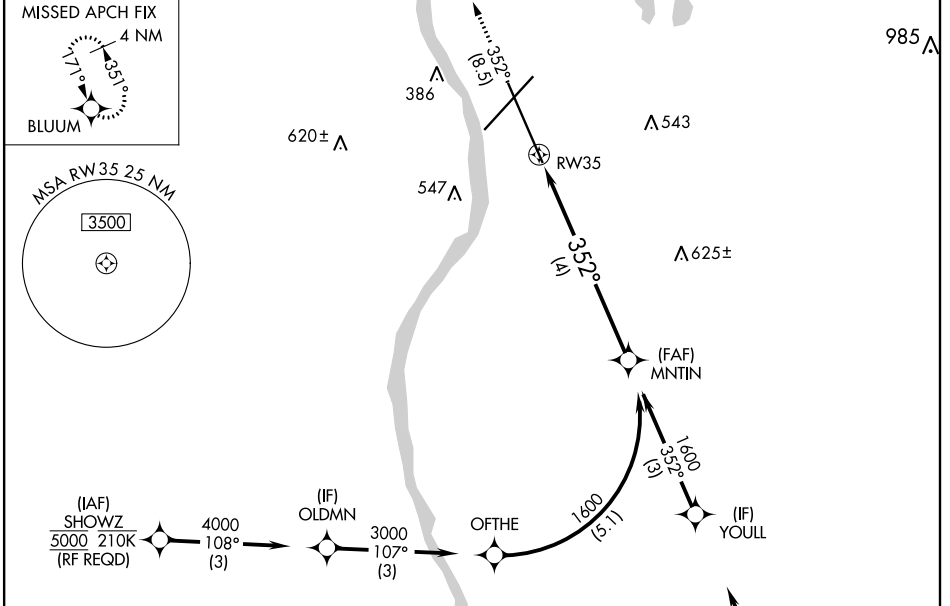
▽ For uncompensated Baro-VNAV systems, procedure NA below -18°C (0°F) or above 54°C (130°F). GPS required. When local altimeter not received, procedure NA. For inop ALSF-2, increase RNP 0.20 all Cats visibility to 1½ SM and RNP 0.30 all Cats visibility to 1¾ SM.

ALFS-2



MISSED APPROACH: Climb to 3000 on track 352° to BLUUM and hold, continue climb-in-hold to 3000.

ATIS	BOSTON APP CON	MANCHESTER TOWER	GND CON	CLNC DEL
119.55	124.9 269.075	121.3 239.025	121.9	135.9



ELEV 266	D	TDZE 265
3000	tr 352°	BLUUM
VGSI and RNAV glidepath not coincident (VGSI Angle 3.00/TCH 68).		
MNTIN 1600		GP 3.00° TCH 55
See planview for multiple IF locations.		
4 NM		
CATEGORY	A	B
RNP 0.20 DA	755/60	490 (500-1¼)
RNP 0.30 DA	802-1¾	537 (600-1¾)

AUTHORIZATION REQUIRED

NE-1, 11 AUG 2022 to 08 SEP 2022

NE-1, 11 AUG 2022 to 08 SEP 2022