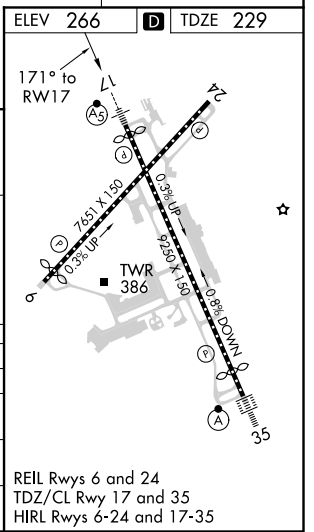
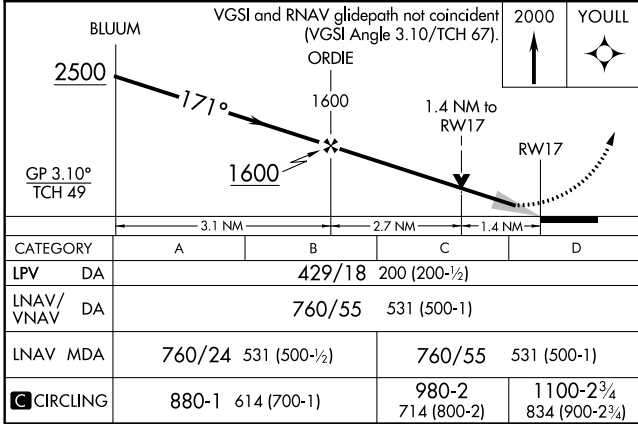
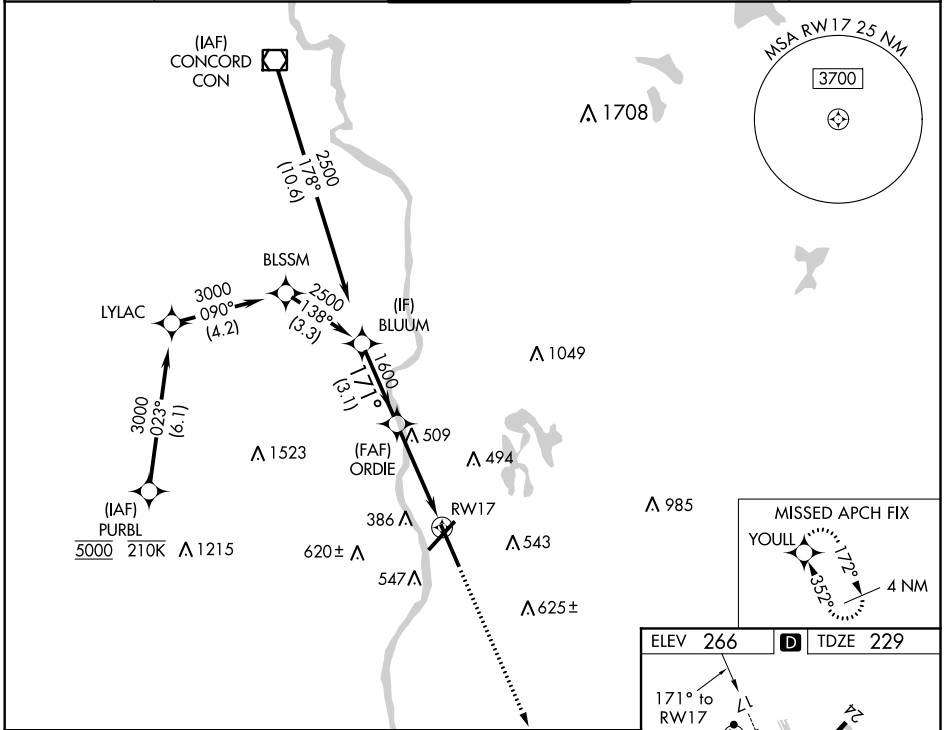


WAAS CH <b>93807</b> <b>W17A</b>	APP CRS <b>171°</b>	Rwy Idg <b>8914</b> TDZE <b>229</b> Apt Elev <b>266</b>
--	------------------------	---

# RNAV (GPS) Y RWY 17

MANCHESTER BOSTON RGNL (MHT)

RNP APCH-GPS.		MALSR		MISSED APPROACH: Climb to 2000 direct YOUULL and hold.	
▼ For uncompensated Baro-VNAV systems, LNAV/VNAV NA below -19°C or above 54°C. ▲ For inop ALS, increase LNAV CAT A/B visibility to RVR 5500.					
ATIS <b>119.55</b>	BOSTON APP CON <b>124.9 269.075</b>	MANCHESTER TOWER <b>121.3 239.025</b>	GND CON <b>121.9</b>	CLNC DEL <b>135.9</b>	



NE-1, 11 AUG 2022 to 08 SEP 2022

NE-1, 11 AUG 2022 to 08 SEP 2022