

WAAS CH <b>53630</b> W <b>13A</b>	APP CRS <b>132°</b>	Rwy Idg <b>5001</b> TDZE <b>13</b> Aprt Elev <b>14</b>
---	------------------------	--

# RNAV (GPS) RWY 13

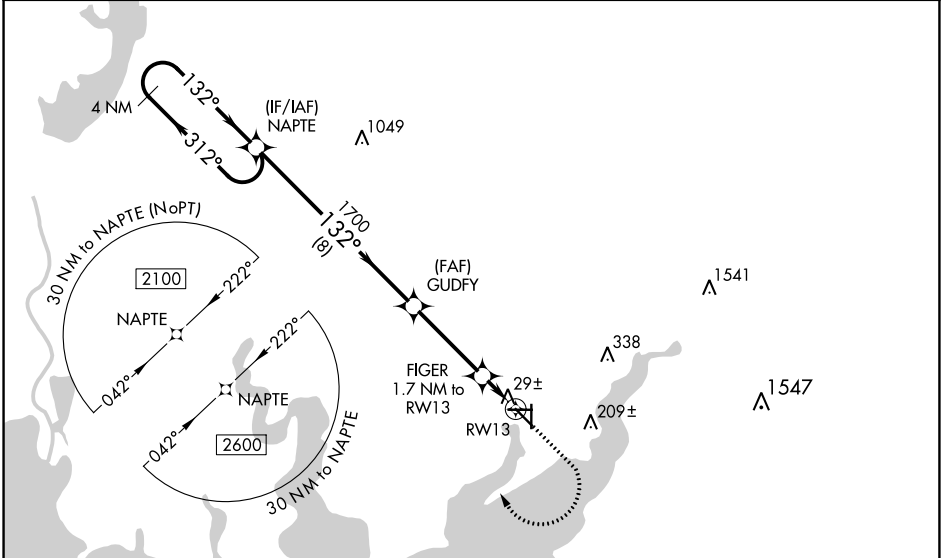
PALACIOS MUNI (PSX)

RNP APCH.

▼ For uncompensated Baro-VNAV systems, LNAV/VNAV NA below -20°C or above 54°C.  
 ▲ When local altimeter setting not received, use Port Lavaca altimeter setting: Increase DA to 319 feet and visibility all Cats ½ SM; increase all MDA 60 feet and LNAV Cat C/D and Circling Cat C/D visibility ¼ SM. Baro-VNAV and VDP NA when using Port Lavaca altimeter setting. Rwy 13 helicopter visibility reduction below ¾ SM NA. Circling Rwy 8, 18, 26, 31, 36 NA at night.

MISSED APPROACH:  
 Climb to 500 then climbing right turn to 2100 direct NAPTE and hold.

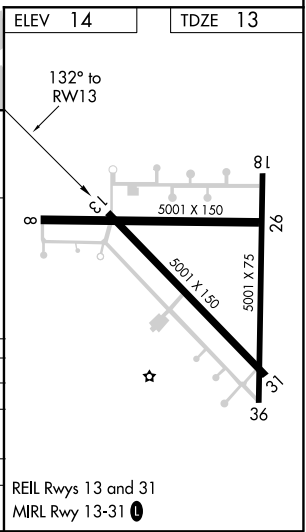
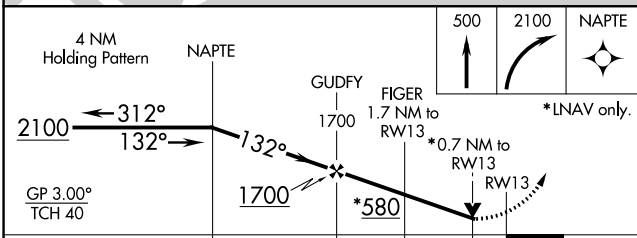
ASOS <b>118.025</b>	HOUSTON CENTER <b>128.6 360.8</b>	UNICOM <b>122.8 (CTAF)</b> 📻
------------------------	--------------------------------------	---------------------------------



SC-5, 11 AUG 2022 to 08 SEP 2022

SC-5, 11 AUG 2022 to 08 SEP 2022

ELEV <b>14</b>	TDZE <b>13</b>
----------------	----------------



CATEGORY	A	B	C	D
LPV DA		263- <sup>7</sup> / <sub>8</sub>	250 (300- <sup>7</sup> / <sub>8</sub> )	
LNAV/VNAV DA		263- <sup>7</sup> / <sub>8</sub>	250 (300- <sup>7</sup> / <sub>8</sub> )	
LNAV MDA	280-1	267 (300-1)	280- <sup>7</sup> / <sub>8</sub>	267 (300- <sup>7</sup> / <sub>8</sub> )
CIRCLING	460-1 446 (500-1)	480-1 466 (500-1)	560-1½ 546 (600-1½)	700-2¼ 686 (700-2¼)

REIL Rwys 13 and 31  
 MRL Rwy 13-31 📻