

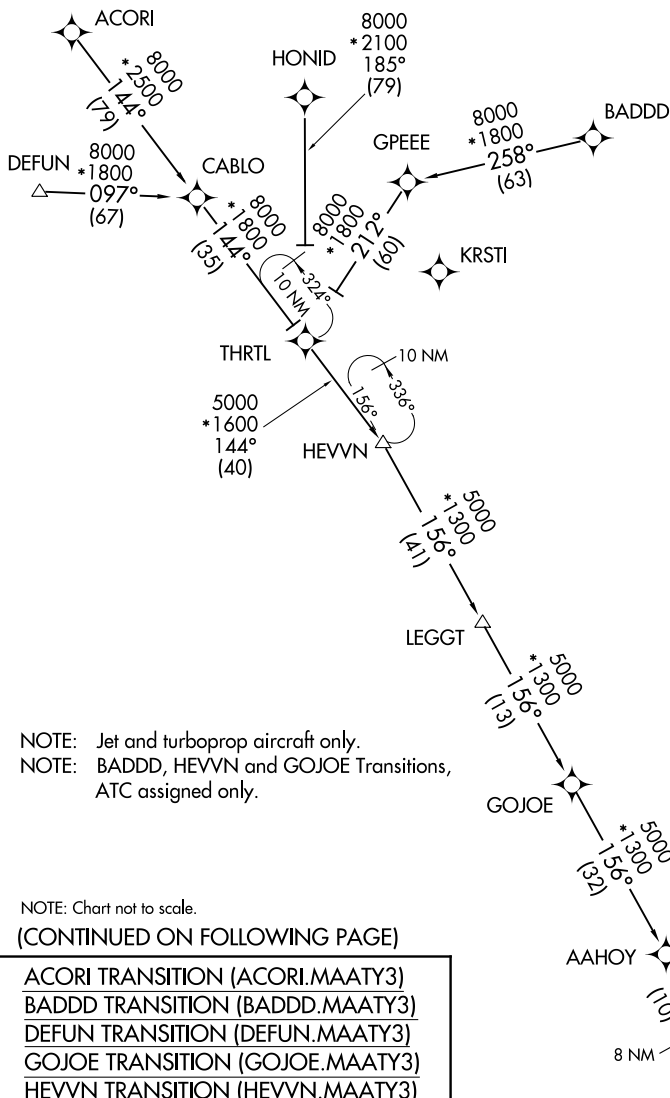
MAATY THREE ARRIVAL (RNAV) Transition Routes

TAMPA, FLORIDA

TAMPA APP CON
 118.8 239.3
 MCF ATIS
 133.825 270.1
 LAL ATIS
 118.025
 TPA D-ATIS
 126.45
 VDF AWOS-3
 121.125

RNAV 1 - DME/DME/IRU or GPS.

RADAR required.



NOTE: Jet and turboprop aircraft only.
 NOTE: BADDD, HEVVN and GOJOE Transitions, ATC assigned only.

NOTE: Chart not to scale.

(CONTINUED ON FOLLOWING PAGE)

- ACORI TRANSITION (ACORI.MAATY3)
- BADDD TRANSITION (BADDD.MAATY3)
- DEFUN TRANSITION (DEFUN.MAATY3)
- GOJOE TRANSITION (GOJOE.MAATY3)
- HEVVN TRANSITION (HEVVN.MAATY3)
- HONID TRANSITION (HONID.MAATY3)

See following page for arrival routes.

SE-3, 11 AUG 2022 to 08 SEP 2022

SE-3, 11 AUG 2022 to 08 SEP 2022

MAATY THREE ARRIVAL (RNAV) Arrival Routes

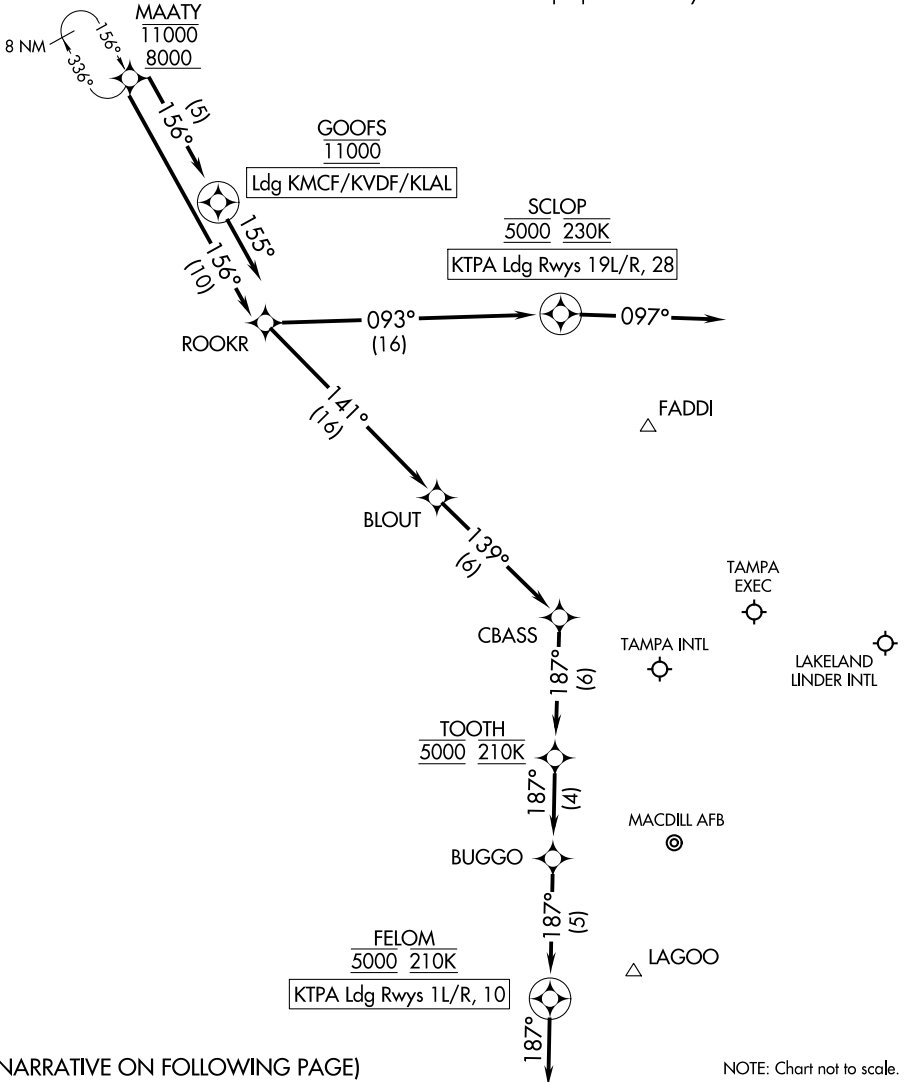
TAMPA, FLORIDA

TAMPA APP CON
118.8 239.3
MCF ATIS
133.825 270.1
LAL ATIS
118.025
TPA D-ATIS
126.45
VDF AWOS-3
121.125

RNAV 1 - DME/DME/IRU or GPS.

RADAR required.

NOTE: Jet and turboprop aircraft only.



(NARRATIVE ON FOLLOWING PAGE)

SE-3, 11 AUG 2022 to 08 SEP 2022

SE-3, 11 AUG 2022 to 08 SEP 2022

ARRIVAL ROUTE DESCRIPTION

KTPA: From MAATY on track 156° to ROOKR.

LANDING KTPA RUNWAYS 1L/R, 10: From ROOKR on track 141° to BLOUT, then on track 139° to CBASS, then on track 187° to cross TOOTH at 5000 and at 210K, then on track 187° to BUGGO, then on track 187° to cross FELOM at 5000 and at 210K, then on track 187°. Expect RADAR vectors to final approach course.

LANDING KTPA RUNWAYS 19L/R, 28: From ROOKR on track 093° to cross SCLOP at 5000 and at 230K, then on heading 097° or as assigned by ATC. Expect RADAR vectors to final approach course.

LANDING KMCF/KVDF/KLAL: From MAATY on track 156° to cross GOOFS at 11000, then on heading 155°. Expect RADAR vectors to final approach course.

SE-3, 11 AUG 2022 to 08 SEP 2022

SE-3, 11 AUG 2022 to 08 SEP 2022