

BURRO FOUR DEPARTURE (RNAV)

AL-430 (FAA)

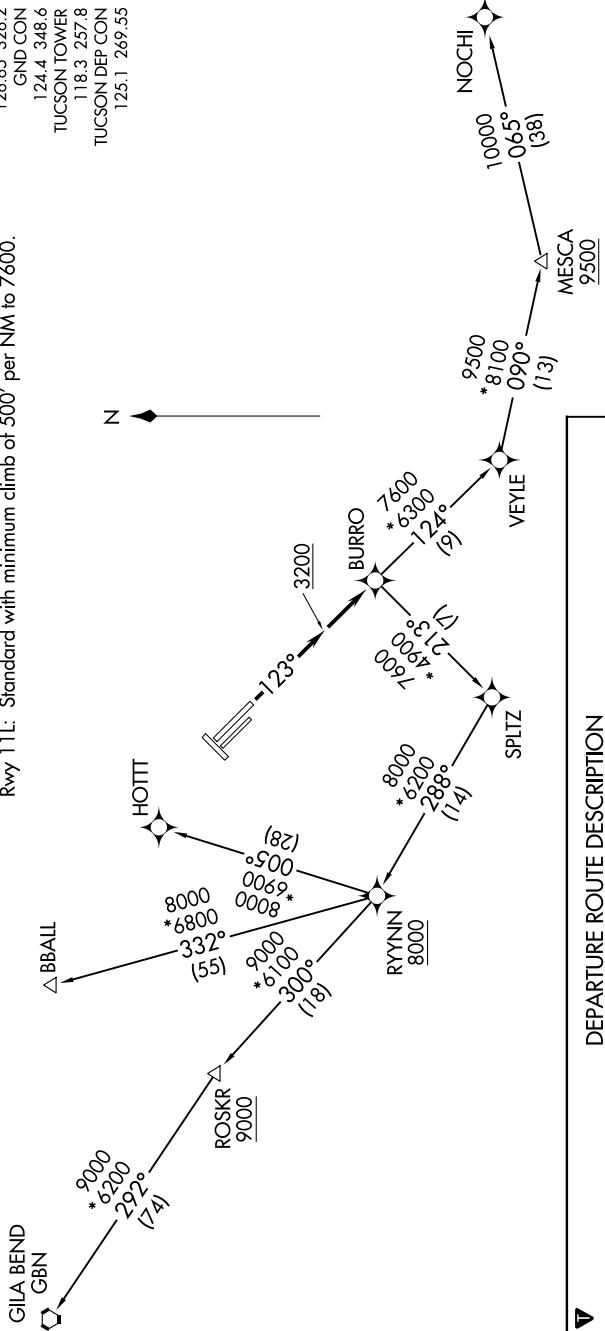
TUCSON INTL (TUS)
TUCSON, ARIZONA

SW-4, 11 AUG 2022 to 08 SEP 2022

TAKEOFF MINIMUMS
 Rwys 3, 11R, 21, 29L, 29R: NA - ATC.
 Rwy 11L: Standard with minimum climb of 500' per NM to 7600.

ATIS
 123.8 279.65
 CLNC DEL
 126.65 326.2
 GND CON
 124.4 348.6
 TUCSON TOWER
 118.3 257.8
 TUCSON DEP CON
 125.1 269.55

TOP ALTITUDE:
17000



DEPARTURE ROUTE DESCRIPTION

TAKEOFF RUNWAY 11L: Climb heading 123° to 3200 MSL, then direct BURRO, thence . . .

. . . via (transition) maintain 17000, expect filed altitude 10 minutes after departure.

BBALL TRANSITION (BURRO4.BBALL)
GILA BEND TRANSITION (BURRO4.GBN)
HOTT TRANSITION (BURRO4.HOTT)
NOCHI TRANSITION (BURRO4.NOCHI)

NOTE: GPS required.
 NOTE: RNAV 1.
 NOTE: Chart not to scale.

SW-4, 11 AUG 2022 to 08 SEP 2022