

LOC/DME I-TUS 111.7 Chan 54	APP CRS 123°	Rwy Idg 10996 TDZE 2599 Apt Elev 2643
---	------------------------	--

ILS or LOC RWY 11L

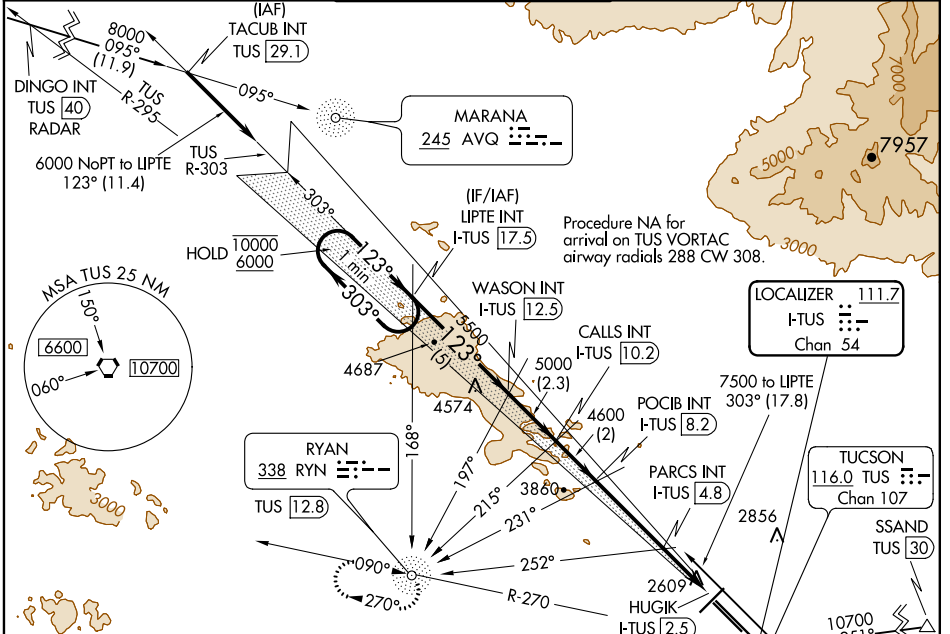
TUCSON INTL (TUS)

ADF or RADAR required for arrivals at DINGO.
ADF or DME required.
DME required for arrivals at SSAND.

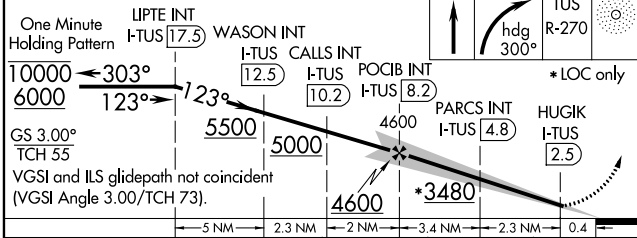
MALS R MISSED APPROACH: Climb to 4000 then climbing right turn to 6000 on heading 300° and TUS VORTAC R-270 to RYN NDB/TUS 12.8 DME and hold.

For inop ALS, increase S-ILS Cat E visibility to RVR 4000, S-LOC 11L Cat E visibility to 2½ SM; PARCS FIX MINIMUMS: S-LOC 11L Cat C/D/E visibility to RVR 5500.

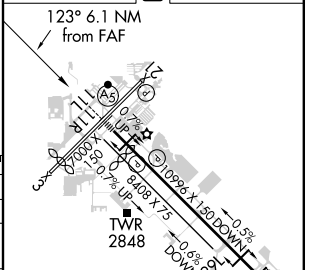
ATIS 123.8 279.65	TUCSON APP CON 119.4 318.1	TUCSON TOWER 118.3 257.8	GND CON 124.4 348.6	CLNC DEL 126.65 326.2
-----------------------------	--------------------------------------	------------------------------------	-------------------------------	---------------------------------



Use I-TUS DME when on the localizer course.



ELEV 2643	TDZE 2599
-----------	-----------



CATEGORY	A	B	C	D	E
S-ILS 11L	2800/24 201 (200-½)				
S-LOC 11L	3480/40	881 (900-¾)	3480-2	881 (900-2)	
CIRCLING	3480-1¼	837 (900-1¼)	3480-2½ 837 (900-2½)	3660-3 1017 (1100-3)	3920-3 277 (1300-3)
PARCS FIX MINIMUMS					
S-LOC 11L	2960/24	361 (400-½)	2960/40	361 (400-¾)	
CIRCLING	3160-1 517 (600-1)	3220-1 577 (600-1)	3220-1½ 577 (600-1½)	3660-3 1017 (1100-3)	3920-3 277 (1300-3)

FAF to MAP 5.7 NM					
Knots	60	90	120	150	180
Min:Sec	5:42	3:48	2:51	2:17	1:54

SW-4, 11 AUG 2022 to 08 SEP 2022

SW-4, 11 AUG 2022 to 08 SEP 2022