

APP CRS	Rwy Idg	6150
030°	TDZE	2572
	Apt Elev	2643

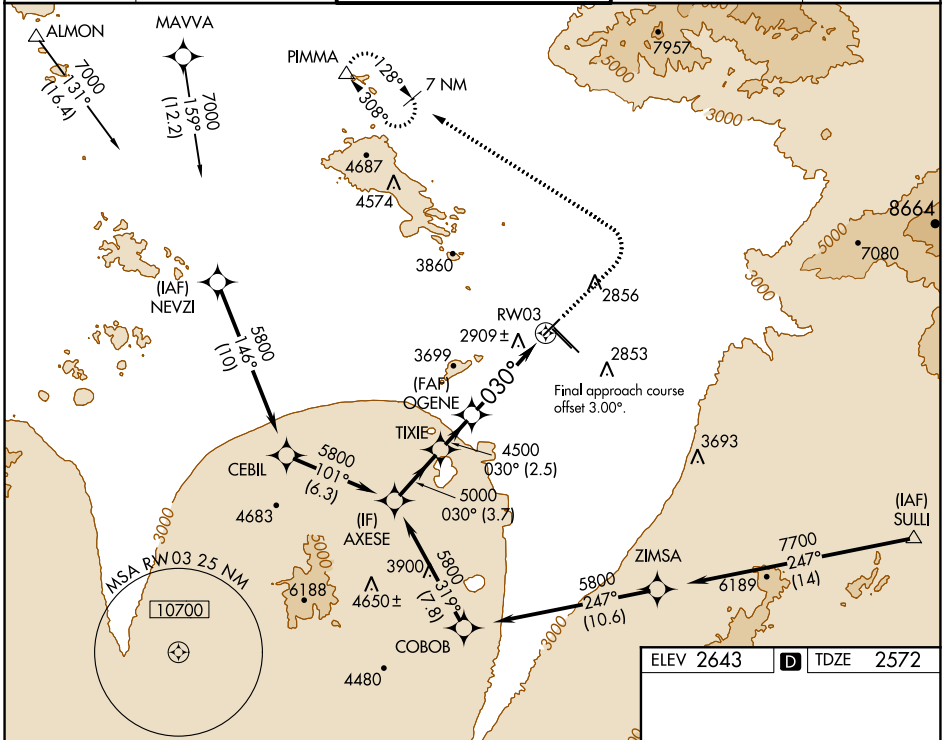
RNAV (GPS) RWY 3

TUCSON INTL (TUS)

⚠ For uncompensated Baro-VNAV systems, LNAV/VNAV NA below -20°C (-4°F) or above 27°C (80°F). DME/DME RNP-0.3 NA. Helicopter visibility reduction below ¾ SM NA.

⚠ MISSED APPROACH: Climb to 3500 then climbing left turn to 6500 direct PIMMA and hold.

ATIS	TUCSON APP CON	TUCSON TOWER	GND CON	CLNC DEL
123.8 279.65	119.4 318.1	118.3 257.8	124.4 348.6	126.65 326.2

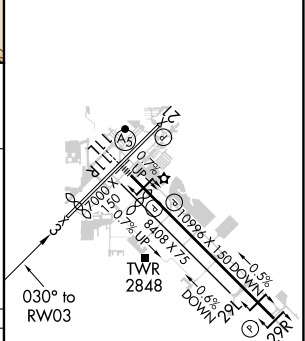


SW-4, 11 AUG 2022 to 08 SEP 2022

SW-4, 11 AUG 2022 to 08 SEP 2022

ELEV 2643	D TDZE 2572
-----------	--------------------

Procedure Turn NA	AXESE	TIXIE	*INAV only	
	5800	5000	4500	3500 6500 PIMMA
GP 3.00° TCH 50	030°	030°	*1.8 NM to RW03	RW03
	3.7 NM	2.5 NM	4.1 NM	1.8 NM
CATEGORY	A	B	C	D
LNAV/ VNAV DA	3284-2½		712 (700-2½)	
LNAV MDA	3180-1	608 (600-1)	3180-1¾	608 (600-1¾)
CIRCLING	3180-1 537 (600-1)	3220-1 577 (600-1)	3220-1¾ 577 (600-1¾)	3660-3 1017 (1100-3)



HIRL Rwy 11L-29R
MIRL Rwy 3-21 and 11R-29L
REIL Rwy 21, 29L and 29R