

RNAV (RNP) Y RWY 11L

TUCSON INTL (TUS)

| | | |
|-------------|----------|--------------|
| APP CRS | Rwy Idg | 10996 |
| 123° | TDZE | 2599 |
| | Apt Elev | 2643 |

| | | |
|--|-------|--|
| RNP AR APCH. | MALSR | MISSED APPROACH: Climb to 6000 via 123° track to CURGA, 213° track to REBDE, 303° track to TOYOP and hold. |
| <p>▼ For uncompensated Baro-VNAV systems, procedure NA below -3°C or above 52°C. For inoperative MALSR, increase RNP 0.30 visibility to RVR 6000 all Cats. GPS required.</p> <p>▲ NA</p> | | |

| | | | | |
|---------------------|--------------------|--------------------|--------------------|---------------------|
| ATIS | TUCSON APP CON | TUCSON TOWER | GND CON | CLNC DEL |
| 123.8 279.65 | 119.4 318.1 | 118.3 257.8 | 124.4 348.6 | 126.65 326.2 |

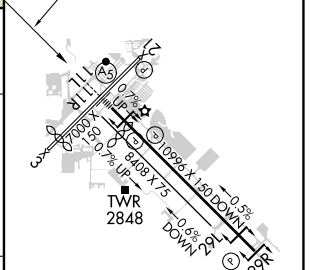
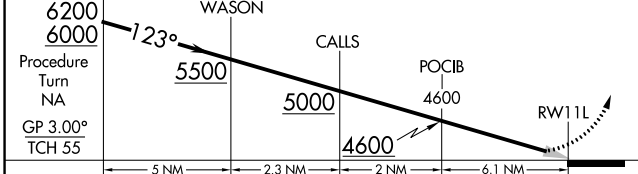


SW-4, 11 AUG 2022 to 08 SEP 2022

SW-4, 11 AUG 2022 to 08 SEP 2022

| | |
|-----------|--------------------|
| ELEV 2643 | D TDZE 2599 |
|-----------|--------------------|

| | | | | | |
|--|-------|---------|-------|---------|-------|
| VGSJ and RNAV glidepath not coincident (VGSJ Angle 3.00/TCH 73). | | | | | |
| 6000 | CURGA | 213° tr | REBDE | 303° tr | TOYOP |



| | | | | |
|-------------|---------------------|---|---|---|
| CATEGORY | A | B | C | D |
| RNP 0.30 DA | 2947/40 348 (400-¾) | | | |

AUTHORIZATION REQUIRED

HIRL Rwy 11L-29L
MIRL Rwy 3-21 and 11R-29L
REIL Rwy 21, 29L and 29R