

APP CRS 303°	Rwy Idg 10996
	TDZE 2643
	Apt Elev 2643

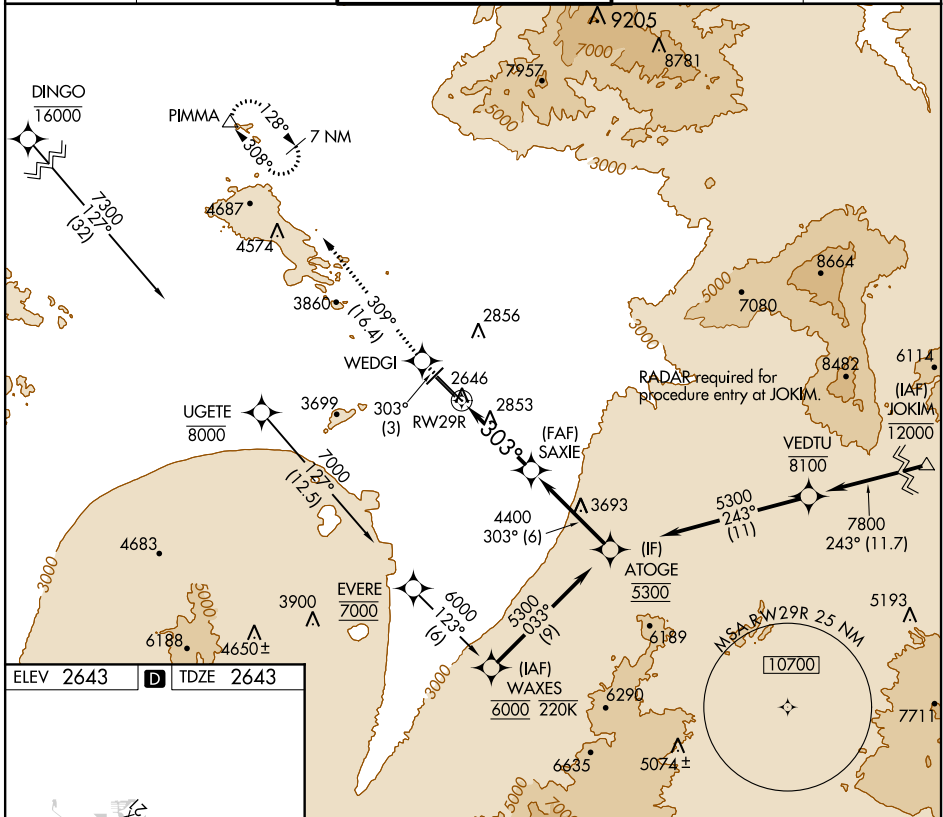
RNAV (RNP) Y RWY 29R

TUCSON INTL (TUS)

NA When VGSI inop, procedure NA at night. GPS required. For uncompensated Baro-VNAV systems, procedure NA below -5°C (23°F) or above 43°C (110°F). Rwy 29R helicopter visibility reduction below ¼ SM NA.

MISSED APPROACH: Climb to 6500 on 303° track to WEDGI 309° track to PIMMA and hold.

ATIS 123.8 279.65	TUCSON APP CON 119.4 318.1	TUCSON TOWER 118.3 257.8	GND CON 124.4 348.6	CLNC DEL 126.65 326.2
-----------------------------	--------------------------------------	------------------------------------	-------------------------------	---------------------------------



ELEV 2643	D	TDZE 2643
-----------	----------	-----------

HIRL Rwy 11L-29R
MIRL Rwys 3-21 and 11R-29L
REIL Rwys 21, 29L and 29R

6500 ↑ 303° tr	WEDGI 309° tr	PIMMA △	VGSI and RNAV glidepath not coincident (VGSI Angle 3.00/TCH 81). SAXIE 4400	ATOGE 5300 Procedure Turn NA
RW29R		303°		
5.3 NM		6 NM		
CATEGORY	A	B	C	D
RNP 0.30 DA	3137-1½ 494 (500-1½)			
GP 3.00° TCH 53				

AUTHORIZATION REQUIRED

SW-4, 11 AUG 2022 to 08 SEP 2022

SW-4, 11 AUG 2022 to 08 SEP 2022