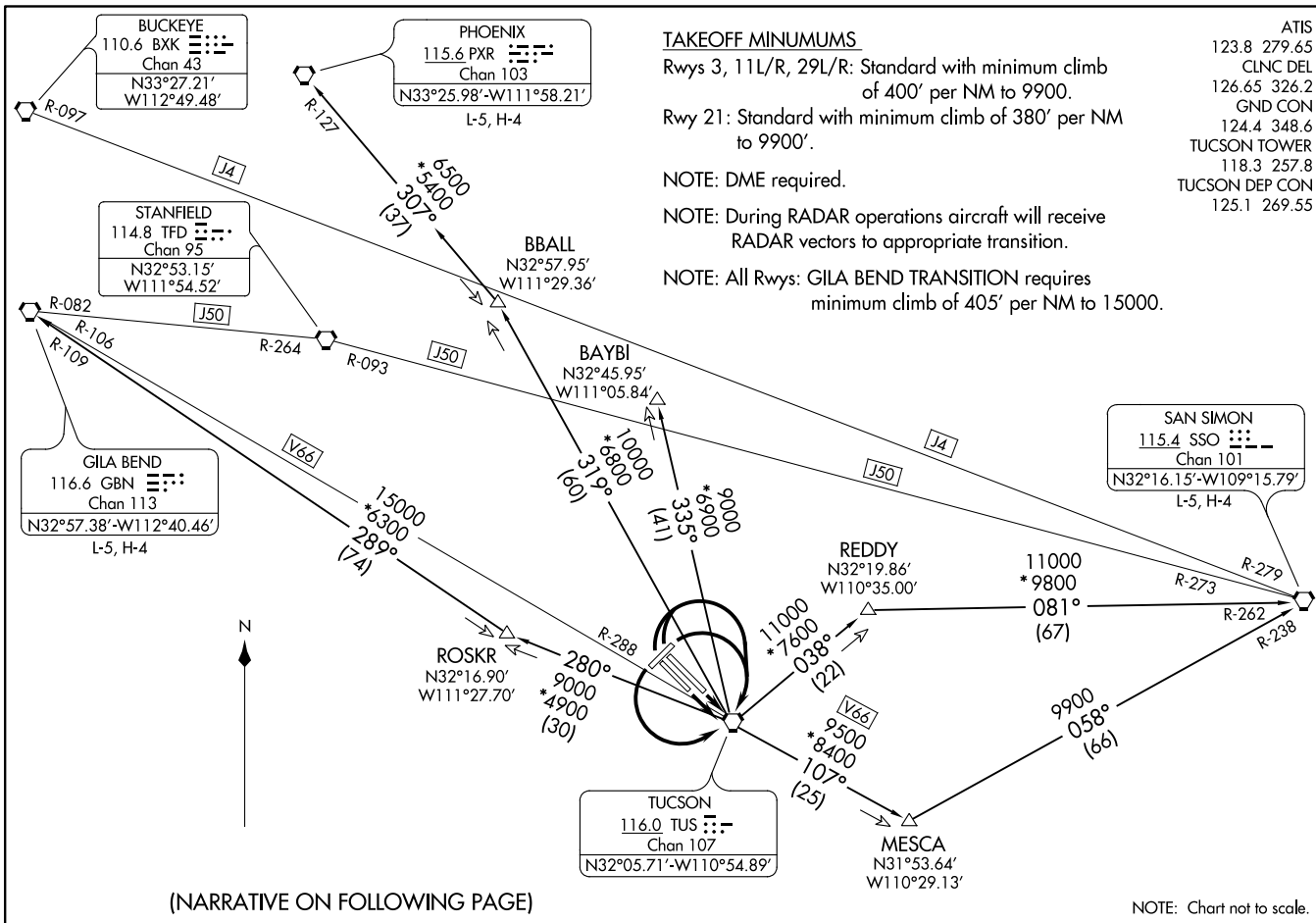


TUCSON EIGHT DEPARTURE  
(TUS8.TUS) 20SEP12

TUCSON, ARIZONA  
TUCSON INTL (TUS)



(NARRATIVE ON FOLLOWING PAGE)

(TUS8.TUS) 18312  
TUCSON EIGHT DEPARTURE

AL-430 (FAA)

TUCSON INTL (TUS)  
TUCSON, ARIZONA



DEPARTURE ROUTE DESCRIPTION

TAKEOFF RUNWAYS 11L/R: Climb direct TUS VORTAC. Thence. . . .

TAKEOFF RUNWAYS 3, 29L/R: Climbing right turn direct TUS VORTAC. Thence. . . .

TAKEOFF RUNWAY 21: Climbing left turn direct TUS VORTAC. Thence. . . .

. . . . via assigned transition. Maintain 17000, expect clearance to filed altitude 10 minutes after departure.

BAYBI TRANSITION (TUS8.BAYBI): From over TUS VORTAC via TUS R-335 to BAYBI.

BBALL TRANSITION (TUS8.BBALL): From over TUS VORTAC via TUS R-319 to BBALL.

GILA BEND TRANSITION (TUS8.GBN): From over TUS VORTAC via TUS R-280 and GBN R-109 to GBN VORTAC.

MESCA TRANSITION (TUS8.MESCA): From over TUS VORTAC via TUS R-107 and SSO R-238 to SSO VORTAC.

PHOENIX TRANSITION (TUS8.PXR): From over TUS VORTAC via TUS R-319 and PXR R-127 to PXR VORTAC.

REDDY TRANSITION (TUS8.REDDY): From over TUS VORTAC via TUS R-038 and SSO R-262 to SSO VORTAC.

SW-4, 11 AUG 2022 to 08 SEP 2022

SW-4, 11 AUG 2022 to 08 SEP 2022