

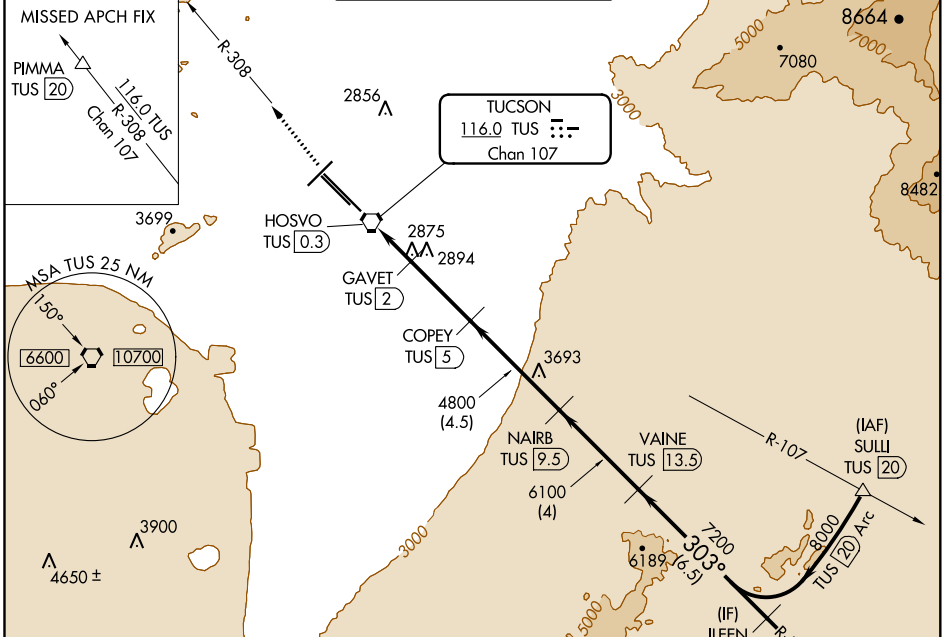
VORTAC TUS 116.0 Chan 107	APP CRS 303°	Rwy Idg 10996 TDZE 2643 Apt Elev 2643
---	------------------------	--

VOR or TACAN RWY 29R

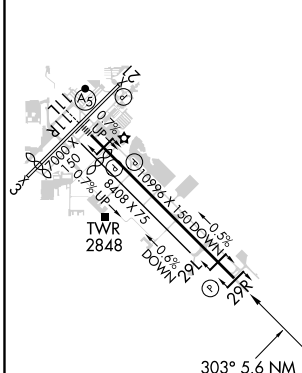
TUCSON INTL (TUS)

DME required.		MISSED APPROACH: Climb to 6500 to PIMMA/TUS 20 DME on TUS R-308.		
---------------	--	--	--	--

ATIS 123.8 279.65	TUCSON APP CON 119.4 318.1	TUCSON TOWER 118.3 257.8	GND CON 124.4 348.6	CLNC DEL 126.65 326.2
-----------------------------	--------------------------------------	------------------------------------	-------------------------------	---------------------------------



ELEV 2643	D	TDZE 2643
-----------	----------	-----------



HIRL Rwy 11L-29R MIRL Rwy 3-21 and 11R-29L REIL Rwy 21, 29L and 29R

6500 ↑ TUS R-308	PIMMA △	VGS1 and descent angles not coincident (VGS1 Angle 3.00/TCH 81).		VAINE TUS 13.5	ILEEN TUS 20
	TUS VORTAC HOSVO TUS 0.3	GAVET TUS 2	COPEY TUS 5	NAIRB TUS 9.5	
					8000
					7200
					6100
					4800
					3600
	0.6	0.3	1.7 NM	3 NM	4.5 NM
				4 NM	6.5 NM

CATEGORY	A	B	C	D	E
S-29R	3160-1	517 (600-1)	3160-1 $\frac{3}{4}$ 517 (600-1 $\frac{3}{4}$)	3160-1 $\frac{1}{2}$ 517 (600-1 $\frac{1}{2}$)	3160-1 $\frac{1}{4}$ 517 (600-1 $\frac{1}{4}$)
CIRCLING	3160-1 517 (600-1)	3220-1 577 (600-1)	3220-1 $\frac{1}{2}$ 577 (600-1 $\frac{1}{2}$)	3660-3 1017(1100-3)	3920-3 1277(1300-3)

SW-4, 11 AUG 2022 to 08 SEP 2022

SW-4, 11 AUG 2022 to 08 SEP 2022