

WAAS CH <b>86245</b> <b>W13A</b>	APP CRS <b>128°</b>	Rwy ldg <b>9111</b> TDZE <b>115</b> Apt Elev <b>115</b>
--	------------------------	---

# RNAV (GPS) RWY 13


VICTORIA RGNL (VCT)

RNP APCH-GPS.

**⚠**

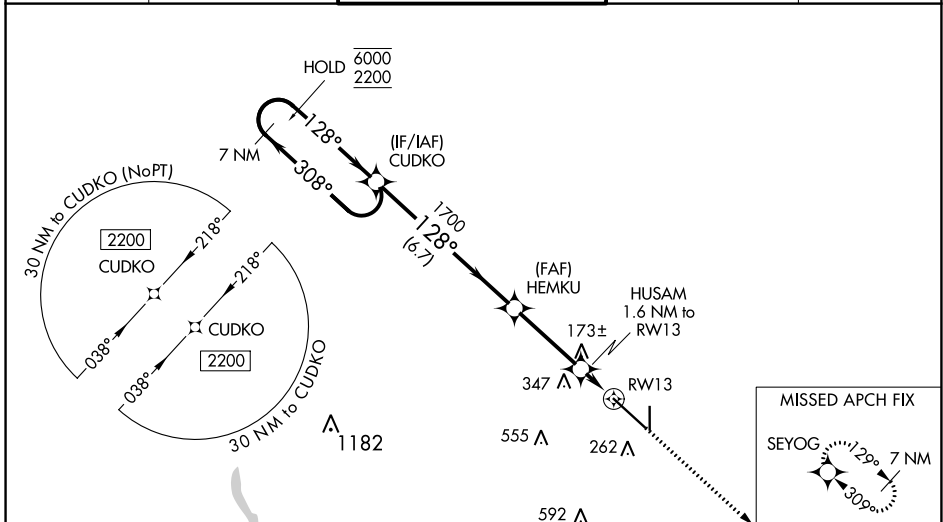
For uncompensated Baro-VNAV systems, LNAV/VNAV NA below -15°C or above 54°C. For inop ALS, increase LPV Cat E and LNAV/VNAV all Cats visibility to 3/4 SM and LNAV Cat E visibility to 1 SM.

MALSR



MISSED APPROACH:  
Climb to 2200 direct SEYOG and hold.

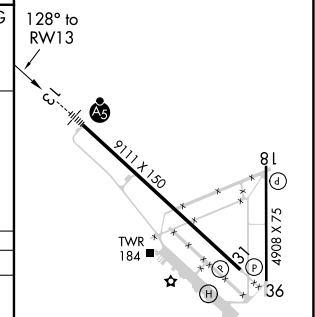
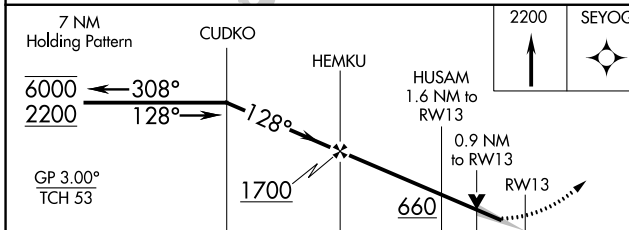
ATIS <b>119.025</b>	HOUSTON CENTER <b>135.05 353.6</b>	VICTORIA TOWER * <b>126.075 (CTAF) 257.95</b>	GND CON <b>120.525 239.25</b>	UNICOM <b>122.7</b>
------------------------	---------------------------------------	--	----------------------------------	------------------------



SC-5, 11 AUG 2022 to 08 SEP 2022

SC-5, 11 AUG 2022 to 08 SEP 2022

ELEV 115	<b>D</b> TDZE 115
----------	-------------------



CATEGORY	A	B	C	D	E
LPV DA		315-1/2	200 (200-1/2)		
LNAV/VNAV DA		365-1/2	250 (300-1/2)		
LNAV MDA		440-1/2	325 (400-1/2)		
<b>C</b> CIRCLING	580-1	465 (500-1)	820-2 705 (800-2)	880-2 1/2 765 (800-2 1/2)	NA

MIRL Rwy 18-36  
REIL Rwy 18 and 36  
HIRL Rwy 13-31 **⓪**