

LOC/DME I-BPT 110.15 Chan 38(Y)	APP CRS 116°	Rwy Idg TDZE Apt Elev	6750 15 15
---	------------------------	-----------------------------	---------------------------------------

ILS or LOC RWY 12

JACK BROOKS RGNL (BPT)

DME or RADAR required.

⚠ When local altimeter setting not received, use Orange County altimeter setting: increase S-ILS 12 DA to 246 feet; increase all MDAs 40 feet. COUGS Fix Minimums: increase S-LOC Cat C/D/E visibility to RVR 5000 feet. For inop MALS/R, increase S-ILS 12 Cat E visibility to RVR 4000, S-LOC 12 Cat E visibility to 2½ miles, COUGS Fix Minimums increase S-LOC 12 Cat C/D/E visibility to 1¾ mile. For inop MALS/R, when using Orange County altimeter setting, increase S-ILS 12 Cat E visibility to RVR 4000, S-LOC 12 Cat C/D/E to 2½ miles. COUGS Fix Minimums: increase S-LOC 12 Cat C/D/E to 1¾ miles. VDP NA when using Orange County altimeter setting.

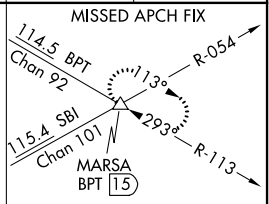
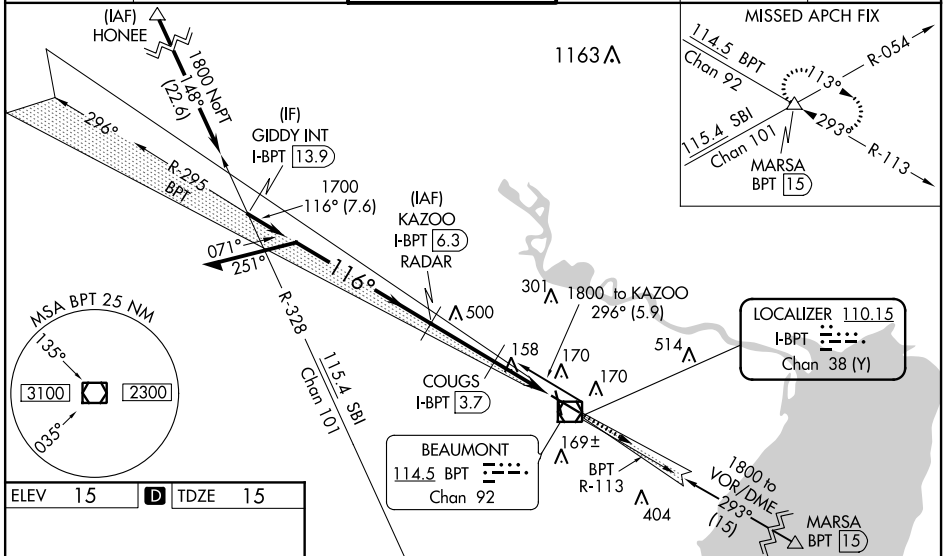
**RVR 1800 authorized with use of FD or AP or HUD to DA, NA when using Orange County altimeter setting.

MALS/R

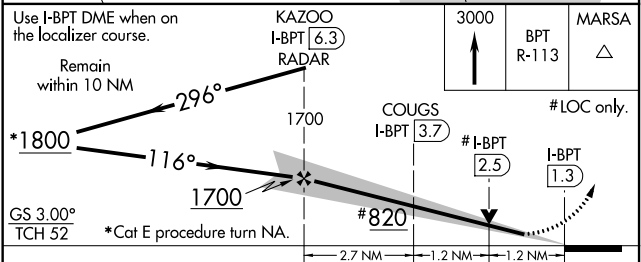
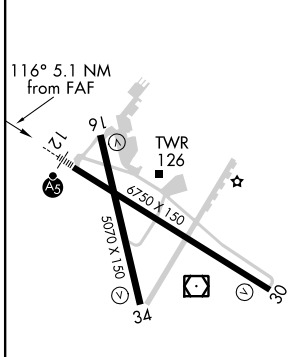


MISSED APPROACH:
Climb to 3000 on BPT VOR/DME R-113 to MARSA INT/BPT 15 DME and hold.

ATIS 126.3	HOUSTON APP CON 121.3 377.1	BEAUMONT TOWER* 119.5 (CTAF) 0	GND CON 124.85	CLNC DEL 118.3	UNICOM 122.95
----------------------	---------------------------------------	--	--------------------------	--------------------------	-------------------------



ELEV 15	D	TDZE 15
---------	----------	---------



CATEGORY	A	B	C	D	E
S-ILS 12**	215/24 200 (200-½)				
S-LOC 12	820/24 805 (900-½)	820/40 805 (900-¾)	820-1¾ 805 (900-1¾)		
COUGS FIX MINIMUMS (DME REQUIRED)					
S-LOC 12	460/24 445 (500-½)		460/45 445 (500-¾)		

FAF to MAP 5.1 NM					
Knots	60	90	120	150	180
Min:Sec	5:06	3:24	2:33	2:02	1:42

SC-5, 11 AUG 2022 to 08 SEP 2022

SC-5, 11 AUG 2022 to 08 SEP 2022