

WAAS CH <b>99715</b> <b>W12A</b>	APP CRS <b>116°</b>	Rwy Idg TDZE Apt Elev	<b>6750</b> <b>15</b> <b>15</b>
--	------------------------	-----------------------------	---------------------------------------

# RNAV (GPS) RWY 12

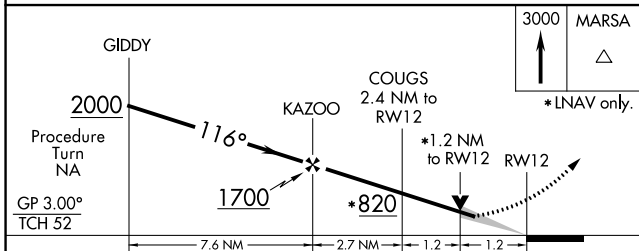
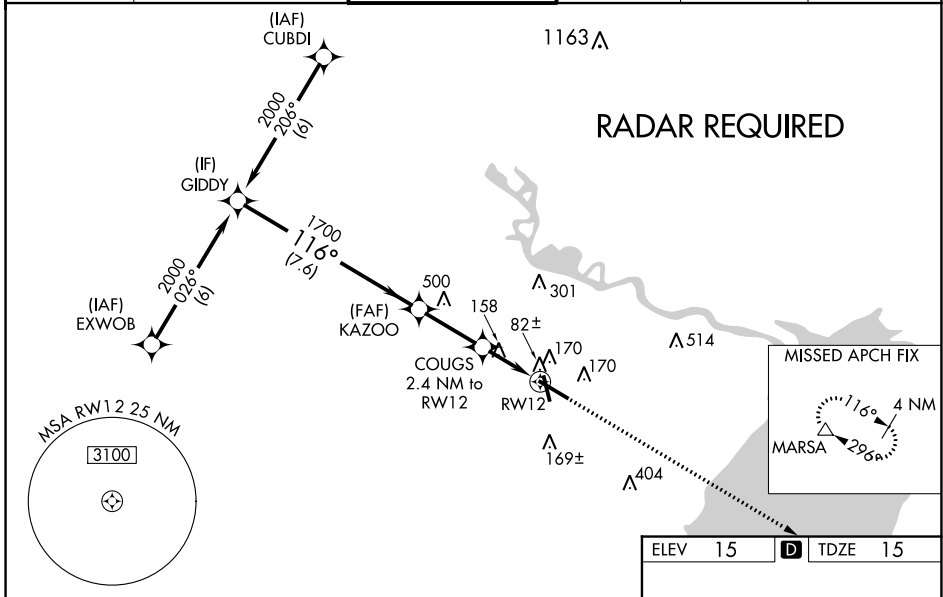
JACK BROOKS RGNL (BPT)

▼ Baro-VNAV NA when using Orange County altimeter setting. For uncompensated Baro-VNAV systems, LNAV/VNAV NA below -15°C (5°F) or above 49°C (120°F). DME/DME RNP-0.3 NA. When local altimeter setting not received, use Orange County altimeter setting and increase LPV DA to 247 feet, LNAV/VNAV DA to 407 feet and all MDA 40 feet; increase LNAV/VNAV and LNAV Cat E visibility ¼ SM. For inoperative MALS, increase LPV Cat E visibility to RVR 4000, LNAV/VNAV Cat E to RVR 6000 and LNAV Cat E to 1½ miles. For inoperative MALS when using Orange County altimeter setting, increase LPV Cat E visibility to RVR 4000, LNAV/VNAV Cat E to 1½ miles, and LNAV Cat E to 1¾ miles. YDP NA when using Orange County altimeter setting. \*\*RVR 1800 authorized with use of FD or AP or HUD to DA (NA when using Orange County altimeter setting).

MALS

MISSED APPROACH:  
Climb to 3000 direct  
MARSA and hold.

ATIS <b>126.3</b>	HOUSTON APP CON <b>121.3 377.1</b>	BEAUMONT TOWER* <b>119.5 (CTAF) 0</b>	GND CON <b>124.85</b>	CLNC DEL <b>118.3</b>	UNICOM <b>122.95</b>
----------------------	---------------------------------------	--	--------------------------	--------------------------	-------------------------



ELEV 15	<b>D</b>	TDZE 15
---------	----------	---------

116° to RWY 12

91

TWR 126

6730 X 150

5070 X 30

34

REIL Rwy 16, 30 and 34

HIRL Rwy 12-30, 16-34

CATEGORY	A	B	C	D	E
LPV DA **	215/24		200 (200-½)		
LNAV/VNAV DA	375/40		360 (400-¾)		
LNAV MDA	460/24	445 (500-½)	460/40 445 (500-¾)	460/50	445 (500-1)
CIRCLING	480-1 465 (500-1)	840-1¼ 825 (900-1¼)	840-2½ 825 (900-2½)	840-2¾ 825 (900-2¾)	840-3 825 (900-3)

SC-5, 11 AUG 2022 to 08 SEP 2022

SC-5, 11 AUG 2022 to 08 SEP 2022