

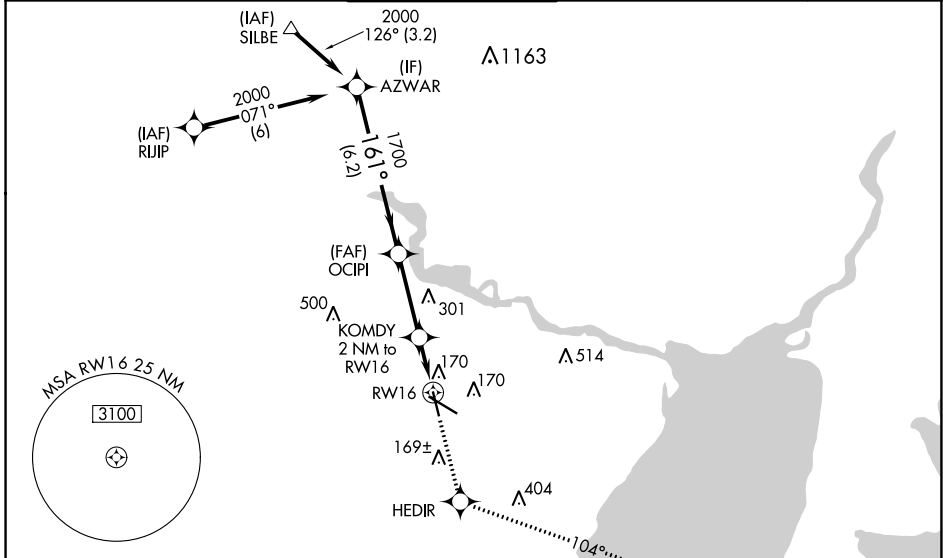
WAAS CH <b>82316</b> <b>W16A</b>	APP CRS <b>161°</b>	Rwy Idg TDZE <b>15</b> Apt Elev <b>15</b>	<b>5070</b>
--	------------------------	---	-------------

# RNAV (GPS) RWY 16

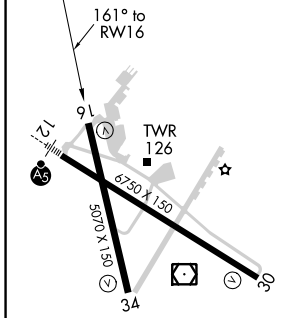
JACK BROOKS RGNL (BPT)

RNP APCH.		MISSED APPROACH: Climb to 3000 direct HEDIR and via track 104° to MARSA and hold.
RADAR required.		
<p>▼ Baro-VNAV NA when using Orange County altimeter setting. For uncompensated Baro-VNAV systems, LNAV/VNAV NA below -1.5°C (5°F) or above 49°C (120°F). Rwy 16 helicopter visibility reduction below ¾ SM NA. When local altimeter setting not received, use Orange County altimeter setting: increase LPV DA to 305; increase LNAV/VNAV DA to 454 feet; increase all MDAs 40 feet, increase LPV all Cats visibility ¼ SM and LNAV Cat D visibility ¼ SM. VDP NA when using Orange County altimeter setting.</p>		

ATIS <b>126.3</b>	HOUSTON APP CON <b>121.3 377.1</b>	BEAUMONT TOWER* <b>119.5 (CTAF) 0</b>	GND CON <b>124.85</b>	CLNC DEL <b>118.3</b>	UNICOM <b>122.95</b>
----------------------	---------------------------------------	--	--------------------------	--------------------------	-------------------------



ELEV 15	<b>D</b>	TDZE 15
---------	----------	---------



REIL Rwy 16, 30 and 34 <b>1</b>
HIRL Rwy 12-30, 16-34 <b>1</b>

AZWAR	OCIPI	KOMDY 2 NM to RWY 16	*1.1 NM to RWY 16	RWY 16	
2000	1700	*700			
GP 3.00°	TCH 52				
	6.2 NM	3.1 NM	0.9 NM	1.1 NM	
CATEGORY	A	B	C	D	E
LPV DA	273-¾ 258 (300-¾)				
LNAV/VNAV DA	422-1½ 407 (500-1½)				
LNAV MDA	420-1	405 (500-1)	420-1¼	405 (500-1¼)	420-1½ 405 (500-1½)

SC-5, 11 AUG 2022 to 08 SEP 2022

SC-5, 11 AUG 2022 to 08 SEP 2022