

WAAS CH <b>69216</b> <b>W30A</b>	APP CRS <b>296°</b>	Rwy Idg TDZE Apt Elev	<b>6750</b> <b>12</b> <b>15</b>
--	------------------------	-----------------------------	---------------------------------------

# RNAV (GPS) RWY 30

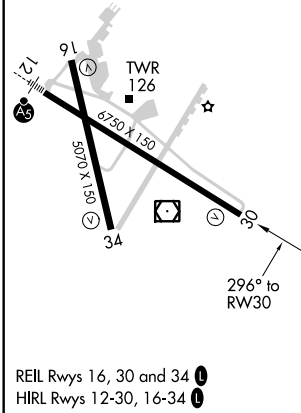
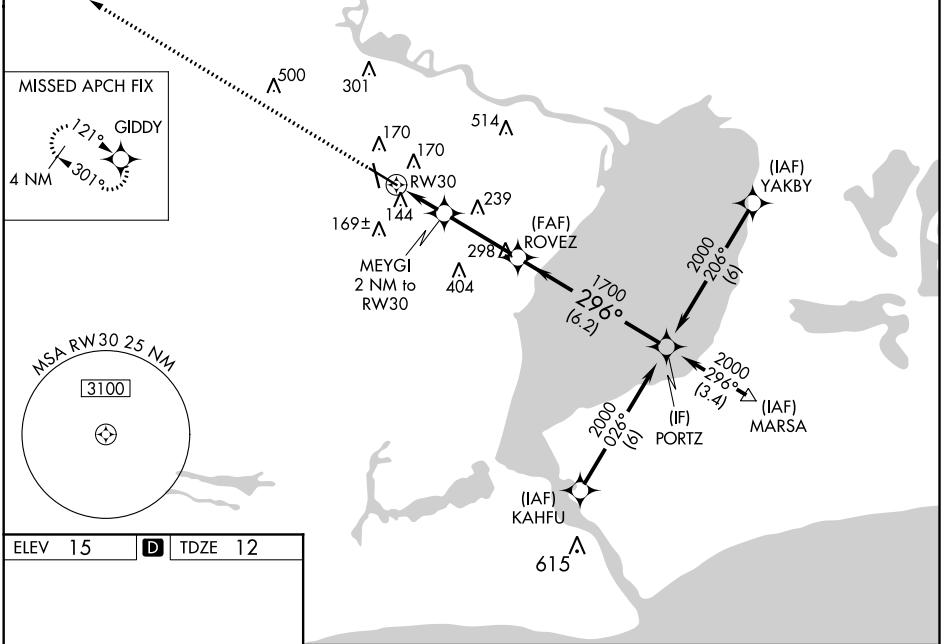
JACK BROOKS RGNL (BPT)

RNP APCH.  
RADAR required.

**Baro-VNAV NA** when using Orange County altimeter setting. For uncompensated Baro-VNAV systems, LNAV/VNAV NA below -15°C (5°F) or above 49°C (120°F). Rwy 30 helicopter visibility reduction below 3/4 SM NA. When local altimeter setting not received, use Orange County altimeter setting: increase LPV DA to 295 feet; increase LNAV/VNAV DA to 436 feet; increase all MDAs 40 feet, increase LPV and LNAV/VNAV all Cats visibility 1/4 SM and LNAV Cat E visibility 1/4 SM.

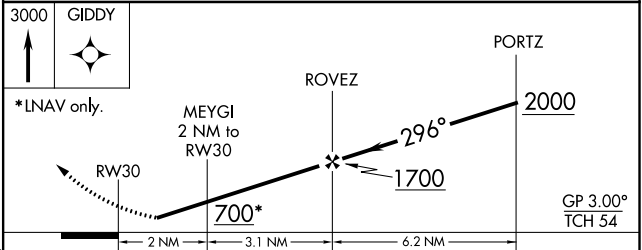
**MISSED APPROACH:**  
Climb to 3000 direct GIDDY and hold.

ATIS <b>126.3</b>	HOUSTON APP CON <b>121.3 377.1</b>	<b>BEAUMONT TOWER*</b> <b>119.5 (CTAF) 0</b>	GND CON <b>124.85</b>	CLNC DEL <b>118.3</b>	UNICOM <b>122.95</b>
----------------------	---------------------------------------	---	--------------------------	--------------------------	-------------------------



ELEV 15 **D** TDZE 12

REIL Rws 16, 30 and 34 **0**  
HIRL Rws 12-30, 16-34 **0**



CATEGORY	A	B	C	D	E
LPV DA	263-3/4		251 (300-3/4)		
LNAV/VNAV DA	404-1 1/4		392 (400-1 1/4)		404-1 1/2 392 (400-1 1/2)
LNAV MDA	540-1	528 (600-1)	540-1 1/2 528 (600-1 1/2)	540-1 3/4	528 (600-1 3/4)