

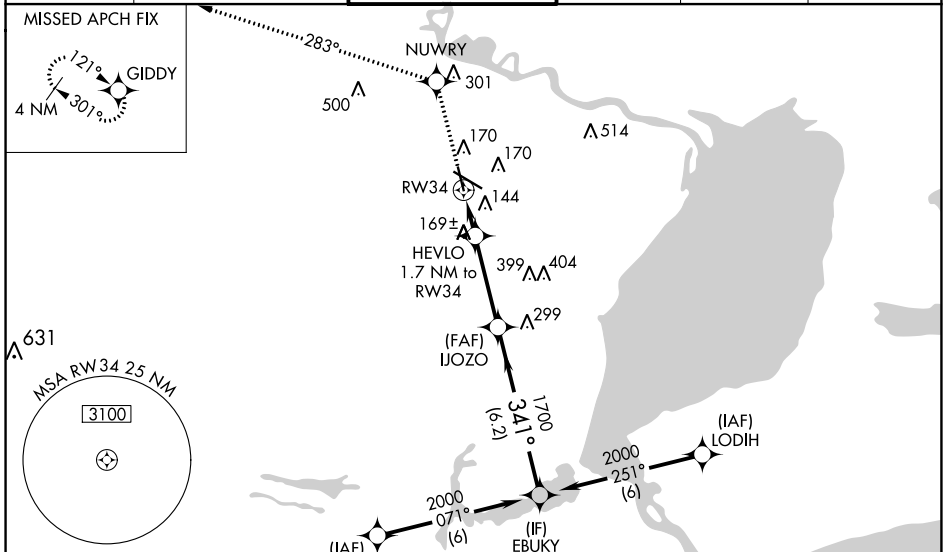
WAAS CH <b>72616</b> <b>W34A</b>	APP CRS <b>341°</b>	Rwy Idg TDZE Apt Elev	<b>5070</b> <b>15</b> <b>15</b>
--	------------------------	-----------------------------	---------------------------------------

# RNAV (GPS) RWY 34

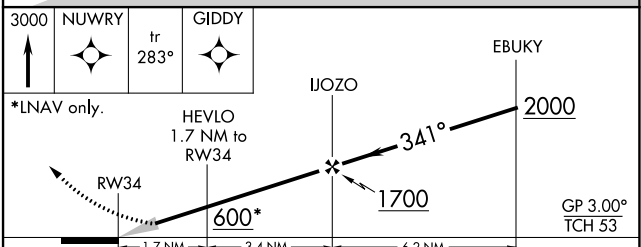
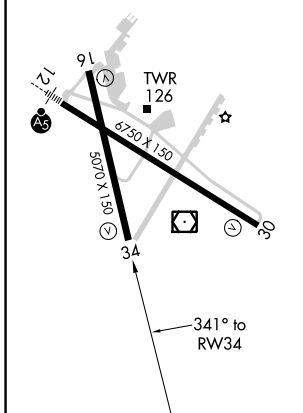
JACK BROOKS RGNL (BPT)

RNP APCH.	MISSED APPROACH: Climb to 3000 direct NUWRY and via track 283° to GIDDY and hold.
RADAR required.	
<p><b>⚠</b> Baro-VNAV NA when using Orange County altimeter setting. For uncompensated Baro-VNAV systems, LNAV/VNAV NA below -15°C (5°F) or above 49°C (120°F). When local altimeter setting not received, use Orange County altimeter setting: increase LPV DA to 247 feet; increase LNAV/VNAV DA to 469 feet; increase LNAV Cat C visibility ¼ SM.</p>	

ATIS <b>126.3</b>	HOUSTON APP CON <b>121.3 377.1</b>	BEAUMONT TOWER* <b>119.5 (CTAF)</b> <b>0</b>	GND CON <b>124.85</b>	CLNC DEL <b>118.3</b>	UNICOM <b>122.95</b>
----------------------	---------------------------------------	---	--------------------------	--------------------------	-------------------------



ELEV 15	<b>D</b>	TDZE 15
REIL Rwy 16, 30 and 34 <b>0</b>		
HIRL Rwy 12-30, 16-34 <b>0</b>		



CATEGORY	A	B	C	D	E
LPV DA	215-¾ 200 (200-¾)				
LNAV/VNAV DA	437-1½ 422 (500-1½)				
LNAV MDA	480-1	465 (500-1)	480-1¼ 465 (500-1¼)	480-1½ 465 (500-1½)	480-1¾ 465 (500-1¾)

SC-5, 11 AUG 2022 to 08 SEP 2022

SC-5, 11 AUG 2022 to 08 SEP 2022