


VOR/DME BPT 114.5 Chan 92	APP CRS 120°	Rwy Idg 6750 TDZE 15 Apt Elev 15
---	------------------------	---

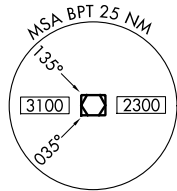
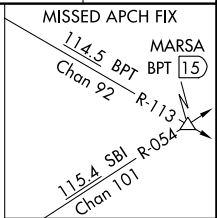
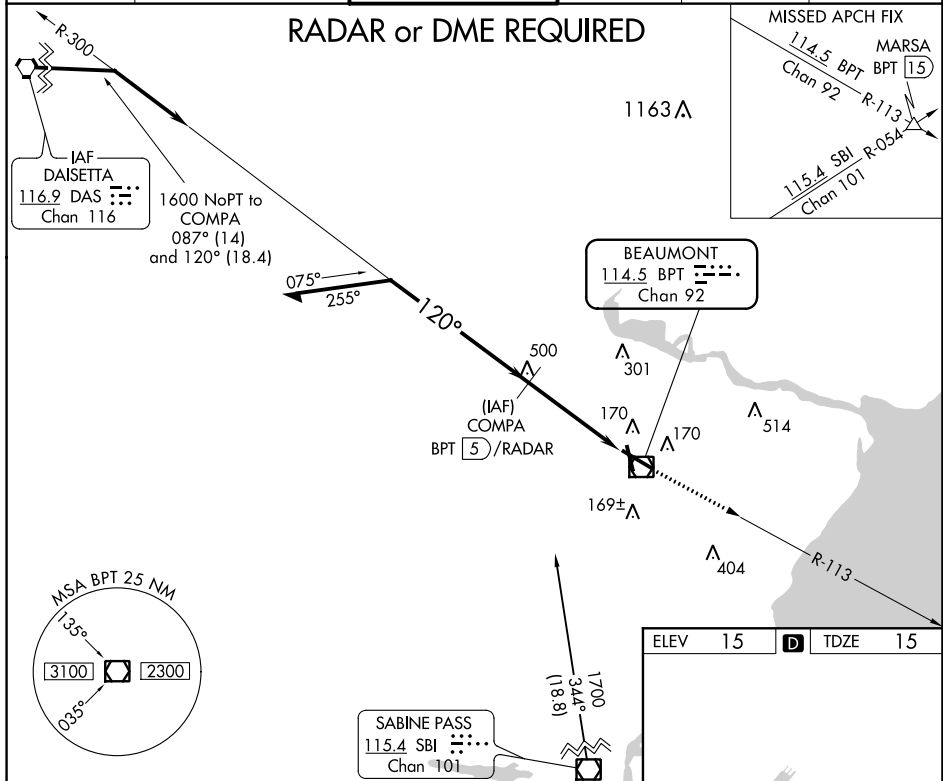
VOR RWY 12
JACK BROOKS RGNL (BPT)

⚠ For inoperative MALS/R, increase S-12 Cat C/D/E visibility to RVR 6000. When local altimeter setting not received, use Orange County altimeter setting and increase all MDA 40 feet and S-12 Cat C/D/E visibility to RVR 4500. For inop MALS/R when using Orange County altimeter setting, increase S-12 Cat E visibility to 1/2 mile.

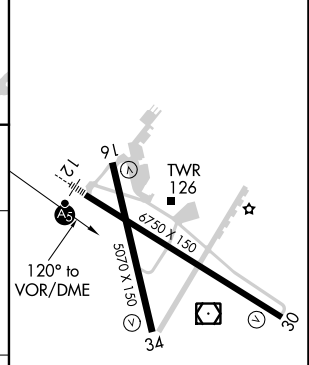
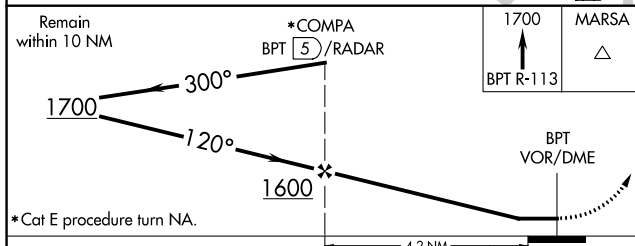
MALS/R 
MISSED APPROACH:
Climb to 1700 via BPT R-113 to MARS A Int/BPT 15 DME.

ATIS 126.3	HOUSTON APP CON 121.3 377.1	BEAUMONT TOWER* 119.5 (CTAF) 0	GND CON 124.85	CLNC DEL 118.3	UNICOM 122.95
----------------------	---------------------------------------	--	--------------------------	--------------------------	-------------------------

RADAR or DME REQUIRED



ELEV 15	D	TDZE 15
---------	----------	---------



CATEGORY	A	B	C	D	E
S-12	420/24	405 (500-1/2)	420/40	405 (500-3/4)	
CIRCLING	480-1 465 (500-1)	840-1 1/4 825 (900-1 1/4)	840-2 1/2 825 (900-2 1/2)	840-2 3/4 825 (900-2 3/4)	840-3 825 (900-3)

REIL Rwy 16, 30 and 34 **0**
HIRL Rwy 12-30, 16-34 **0**

SC-5, 11 AUG 2022 to 08 SEP 2022

SC-5, 11 AUG 2022 to 08 SEP 2022