

VOR/DME BPT <b>114.5</b> Chan <b>92</b>	APP CRS <b>359°</b>	Rwy Idg <b>5070</b> TDZE <b>15</b> Apt Elev <b>15</b>
---	------------------------	---

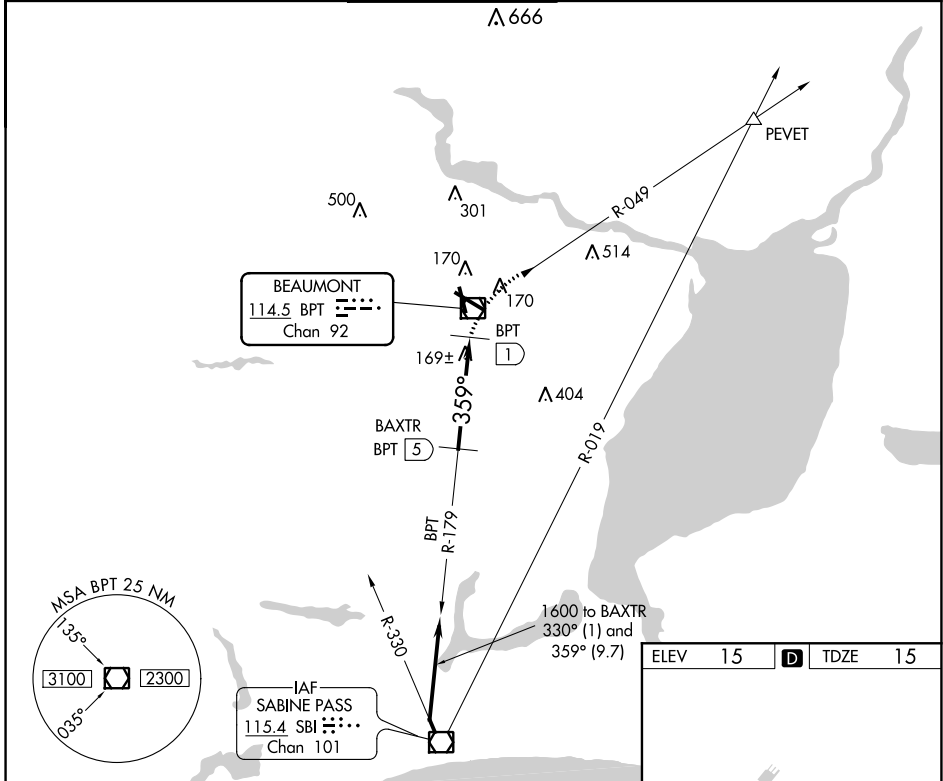
# VOR/DME RWY 34

JACK BROOKS RGNL (BPT)

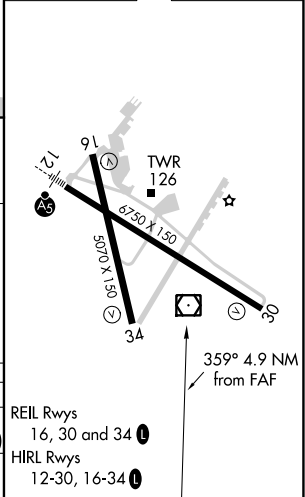
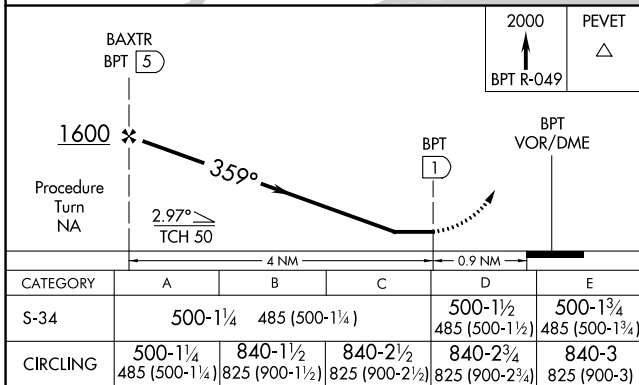
**⚠** When local altimeter setting not received, use Orange County altimeter setting and increase all MDA 40 feet, increase S-34 visibility Cat C and D ¼ SM.

**⚠** MISSED APPROACH: Climb to 2000 via BPT VOR/DME R-049 to PEVET INT.

ATIS <b>126.3</b>	HOUSTON APP CON <b>121.3 377.1</b>	BEAUMONT TOWER* <b>119.5 (CTAF) 0</b>	GND CON <b>124.85</b>	CLNC DEL <b>118.3</b>	UNICOM <b>122.95</b>
----------------------	---------------------------------------	--	--------------------------	--------------------------	-------------------------



ELEV 15	D	TDZE 15
---------	---	---------



SC-5, 11 AUG 2022 to 08 SEP 2022

SC-5, 11 AUG 2022 to 08 SEP 2022