

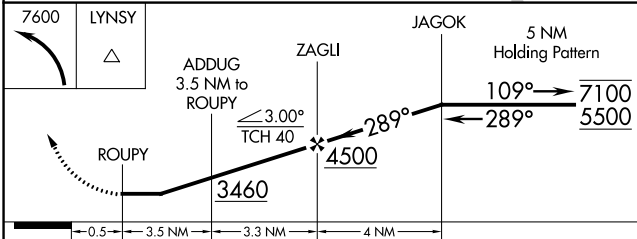
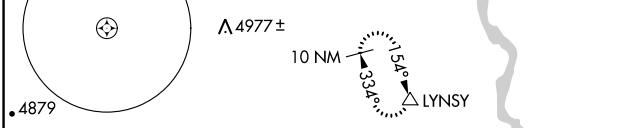
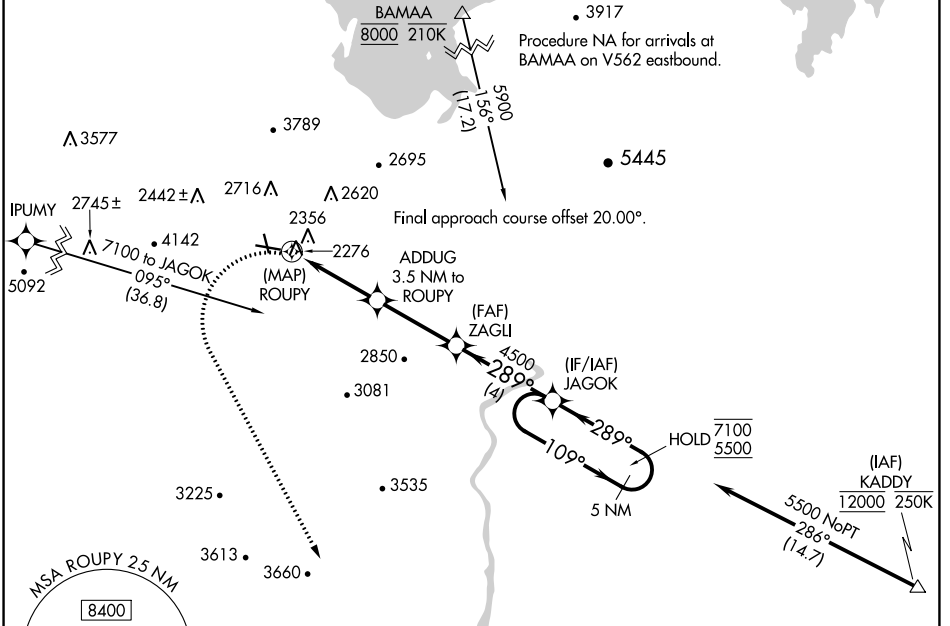
WAAS CH 77643 W27A	APP CRS 289°	Rwy Idg TDZE Apt Elev	4803 2138 2203
--	------------------------	-----------------------------	---

RNAV (GPS) RWY 27

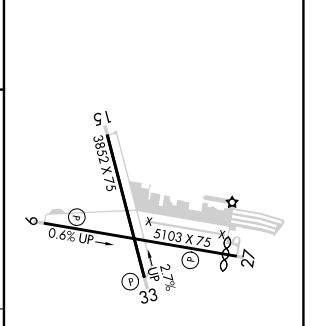
BOULDER CITY MUNI (BVU)

RNP APCH.
 Procedure NA at night.
 Rwy 27 helicopter visibility reduction below 1 SM NA.
 MISSED APPROACH: Climbing left turn to 7600 direct LYNSY and hold, continue climb-in-hold to 7600.

AWOS-3 118.475	LAS VEGAS APP CON 125.475 307.25	UNICOM 122.7 (CTAF) 0
--------------------------	--	---------------------------------



ELEV 2203	TDZE 2138
-----------	-----------



CATEGORY	A	B	C	D
LP MDA	2640-1	502 (500-1)	2640-1 $\frac{3}{8}$ 502 (500-1 $\frac{3}{8}$)	NA
LNAV MDA	2940-1 802 (800-1)	2940-1 $\frac{1}{4}$ 802 (800-1 $\frac{1}{4}$)	2940-2 $\frac{1}{2}$ 802 (800-2 $\frac{1}{2}$)	NA
CIRCLING	2980-1 $\frac{1}{4}$ 777 (800-1 $\frac{1}{4}$)	3360-1 $\frac{1}{2}$ 1157 (1200-1 $\frac{1}{2}$)	4000-3 1797 (1800-3)	NA

MIRL Rwy 9-27 and 15-33 0
 REIL Rwy 9, 15, 27 and 33

SW-4, 11 AUG 2022 to 08 SEP 2022

SW-4, 11 AUG 2022 to 08 SEP 2022