

WAAS CH 61236 W13A	APP CRS 129°	Rwy Idg 6005 TDZE 474 Apt Elev 474
--	------------------------	---

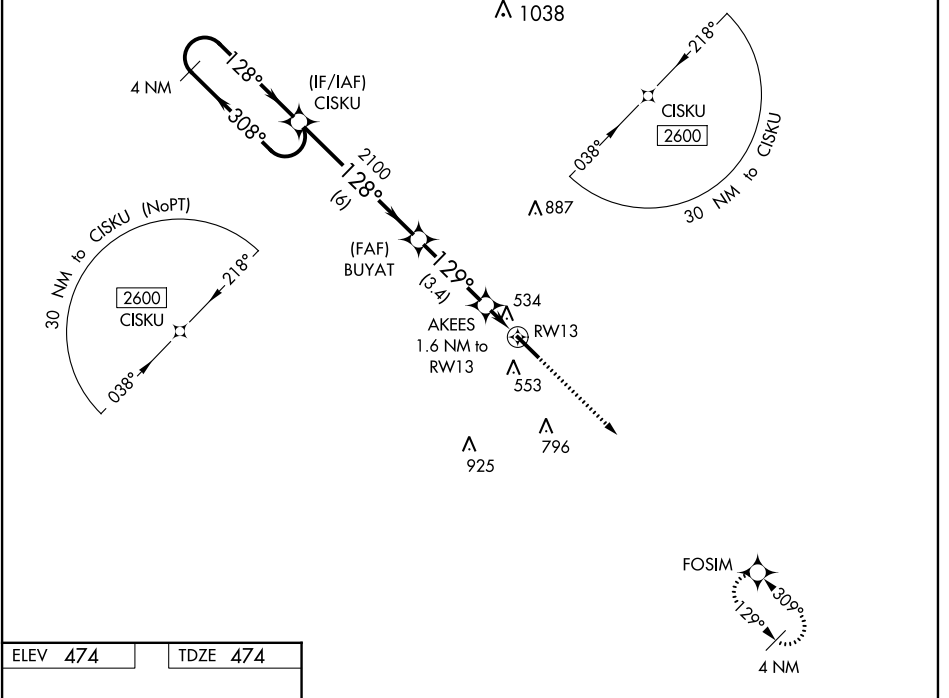
RNAV (GPS) RWY 13

COTULLA-LA SALLE COUNTY (COT)

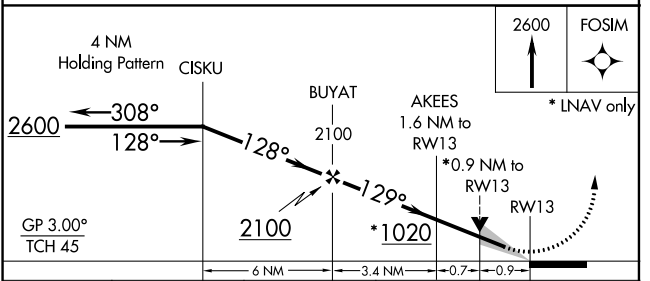
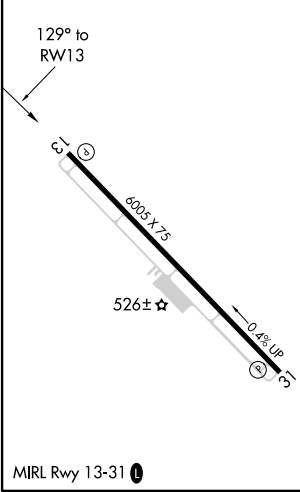
▼ For uncompensated Baro-VNAV systems, LNAV/VNAV NA below -5°C (23°F) or above 54°C (130°F). DME/DME RNP-0.3 NA.

MISSED APPROACH: Climb to 2600 direct FOSIM and hold.

ASOS 118.325	HOUSTON CENTER 134.6 322.5	UNICOM 122.7 (CTAF) 0
------------------------	--------------------------------------	---------------------------------



ELEV 474	TDZE 474
-----------------	-----------------



CATEGORY	A	B	C	D
LPV DA	724-1	250 (300-1)		NA
LNAV/VNAV DA	724-1	250 (300-1)		NA
LNAV MDA	800-1	326 (400-1)		NA
C CIRCLING	920-1 446 (500-1)	940-1 466 (500-1)	1120-1¾ 646 (700-1¾)	NA

SC-3, 11 AUG 2022 to 08 SEP 2022

SC-3, 11 AUG 2022 to 08 SEP 2022