

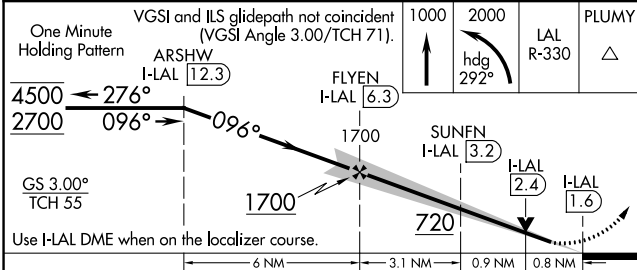
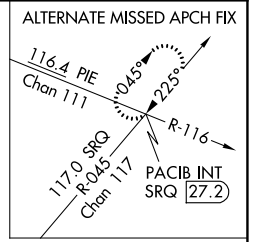
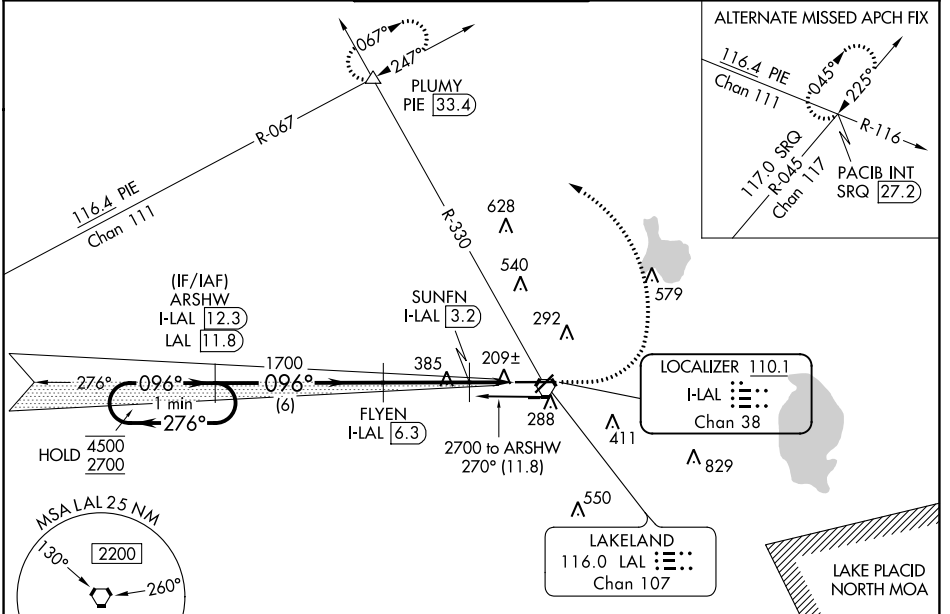
LOC/DME I-LAL <b>110.1</b> Chan 38	APP CRS <b>096°</b>	Rwy Idg TDZE Apt Elev	<b>8500</b> <b>132</b> <b>142</b>
--	------------------------	-----------------------------	---

# ILS or LOC RWY 10

LAKELAND LINDER INTL (LAL)

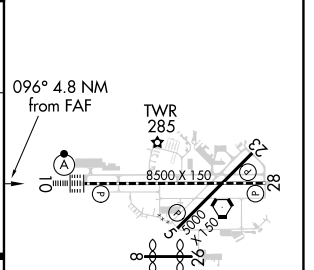
DME required.		ALSF-2	MISSED APPROACH: Climb to 1000 then climbing left turn to 2000 on heading 292° and on LAL VORTAC R-330 to PLUMY INT/PIE 33.4 DME and hold.	
<p>Circling NA to Rwys 8 and 26.</p>				

ATIS <b>118.025</b>	TAMPA APP CON <b>120.65 290.3</b>	LAKELAND TOWER ★ <b>122.95 (CTAF) 236.775</b>	GND CON <b>121.4</b>	UNICOM <b>122.95</b>
------------------------	--------------------------------------	--	-------------------------	-------------------------



ELEV 142	TDZE 132
----------	----------

CATEGORY	A	B	C	D
S-ILS 10		332/18	200 (200-½)	
S-LOC 10		460/24	328 (400-½)	
CIRCLING	600-1 458 (500-1)	660-1 518 (600-1)	720-1½ 578 (600-1½)	840-2¼ 698 (700-2¼)



SE-3, 11 AUG 2022 to 08 SEP 2022

SE-3, 11 AUG 2022 to 08 SEP 2022