

RNAV (GPS) RWY 5

LAKELAND LINDER INTL (LAL)

WAAS CH 42805 W05A	APP CRS 051°	Rwy Idg 5000 TDZE 136 Apt Elev 142
--	------------------------	---

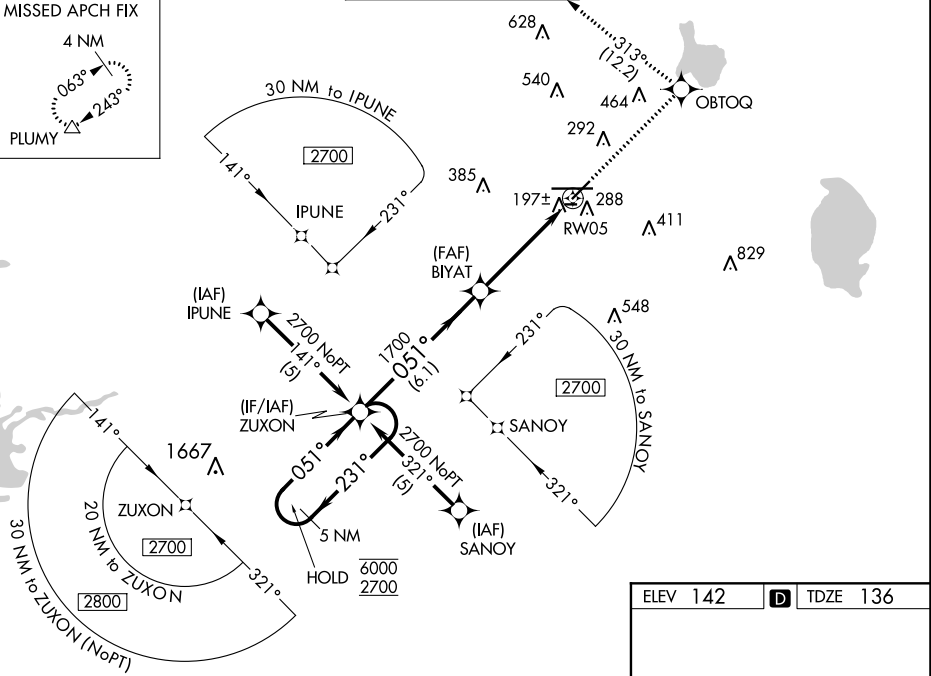
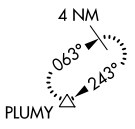
RNP APCH.

- ⚠ For uncompensated Baro-VNAV systems, LNAV/VNAV NA below -15°C or above 54°C.
- ⚠ When local altimeter setting not received, use Plant City altimeter setting: increase LPV DA to 354 feet; increase LNAV/VNAV DA to 523 feet; increase all MDA 20 feet and LNAV Cat C/D visibility 1/8 SM. Baro-VNAV and VDP NA when using Plant City altimeter setting. Circling NA to Rwys 8, 26.

MISSED APPROACH: Climb to 2000 direct OBTOQ and left turn on track 313° to PLUMY and hold.

ATIS 118.025	TAMPA APP CON 120.65 290.3	LAKELAND TOWER ★ 122.95 (CTAF) 236.775	GND CON 121.4	UNICOM 122.95
------------------------	--------------------------------------	--	-------------------------	-------------------------

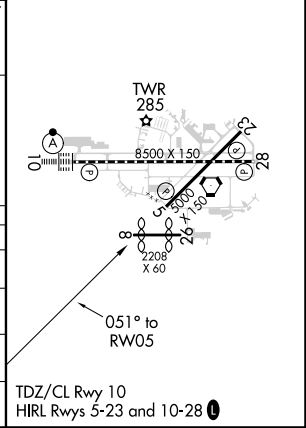
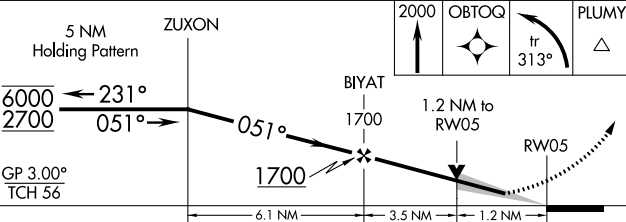
MISSED APCH FIX



SE-3, 11 AUG 2022 to 08 SEP 2022

SE-3, 11 AUG 2022 to 08 SEP 2022

ELEV 142	TDZE 136
----------	----------



CATEGORY	A	B	C	D
LPV DA		336-3/4	200 (200-3/4)	
LNAV/VNAV DA		505-1/4	369 (400-1/4)	
LNAV MDA	560-1	424 (500-1)	560-1/4	424 (500-1/4)
CIRCLING	600-1 458 (500-1)	660-1 518 (600-1)	720-1/2 578 (600-1/2)	840-2/4 698 (700-2/4)