

VORTAC LAL 116.0 Chan 107	APP CRS 096°	Rwy Idg 8414 TDZE 132 Apt Elev 142
---	------------------------	---

VOR RWY 9

LAKELAND LINDER INTL (LAL)

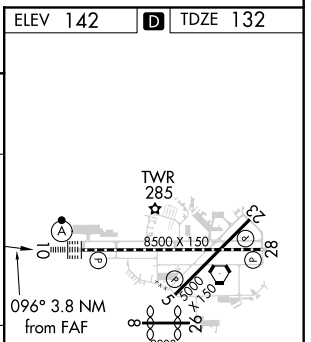
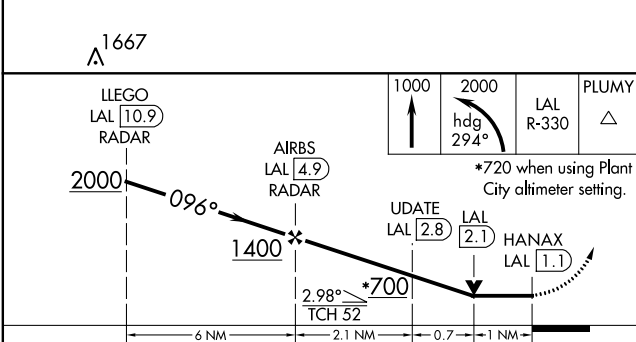
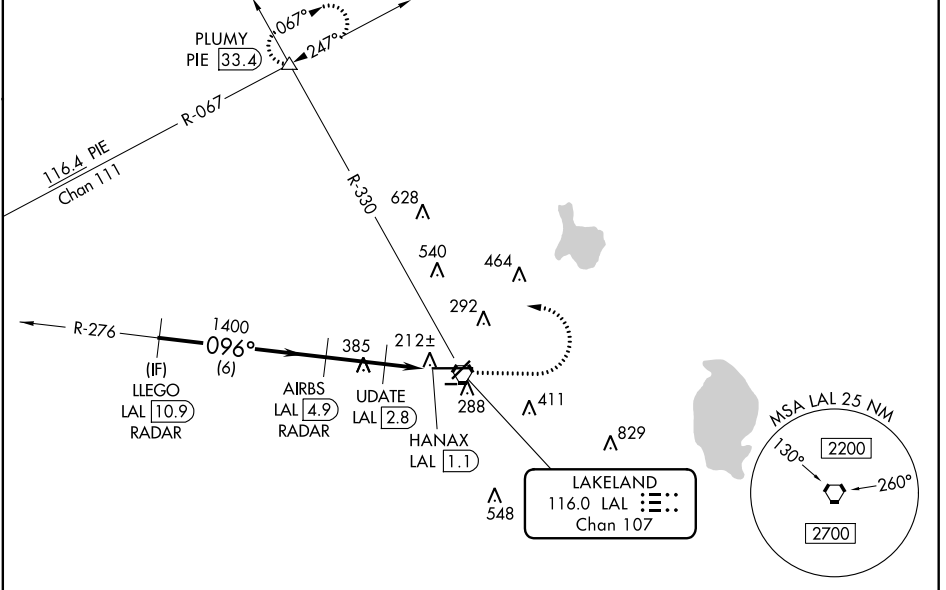
RADAR required for procedure entry. DME or RADAR required.

- ▼ When local altimeter setting not received, use Plant City altimeter setting and increase all MDAs 20 feet and Circling Cat C visibility to 1¾ SM. VDP NA when using Plant City altimeter setting. For inop ALS, increase S-9 Cat C/D visibility to 1½ SM; increase UDATE Fix Minimums S-9 Cat C/D visibility to 1¾ SM. For inop ALS when using Plant City altimeter setting, increase UDATE Fix Minimums S-9 Cat C/D visibility to 1½ SM. Circling NA to Rwy's 8 and 26.



MISSED APPROACH: Climb to 1000 then climbing left turn to 2000 on heading 294° and on LAL VORTAC R-330 to PLUMY INT/PIE 33.4 DME and hold.

ATIS 118.025	TAMPA APP CON 120.65 290.3	LAKELAND TOWER * 122.95 (CTAF) 236.775	GND CON 121.4	UNICOM 122.95
------------------------	--------------------------------------	--	-------------------------	-------------------------



CATEGORY	A		B		C		D	
	S-9	700-½	568 (600-½)	700-¾	568 (600-¾)	720-1½	578 (600-1½)	840-2¼
CIRCLING	700-1	558 (600-1)	720-1½	578 (600-1½)	720-1½	578 (600-1½)	840-2¼	698 (700-2¼)
UPDATE FIX MINIMUMS								
S-9	500-½	368 (400-½)	500-¾	368 (400-¾)	FAF to MAP 3.8 NM			
CIRCLING	600-1	518 (600-1)	660-1	518 (600-1)	720-1½	578 (600-1½)	840-2¼	698 (700-2¼)

ELEV 142	TDZE 132
TDZ/CL Rwy 10 HIRL Rwy's 5-23 and 10-28	
Knots	60 90 120 150 180
Min:Seq	3:48 2:32 1:54 1:31 1:16

SE-3, 11 AUG 2022 to 08 SEP 2022

SE-3, 11 AUG 2022 to 08 SEP 2022