

# RNAV (GPS) RWY 11

APCH CRS	Rwy Idg	8000
105°	TDZE	318
	Arpt Elev	322

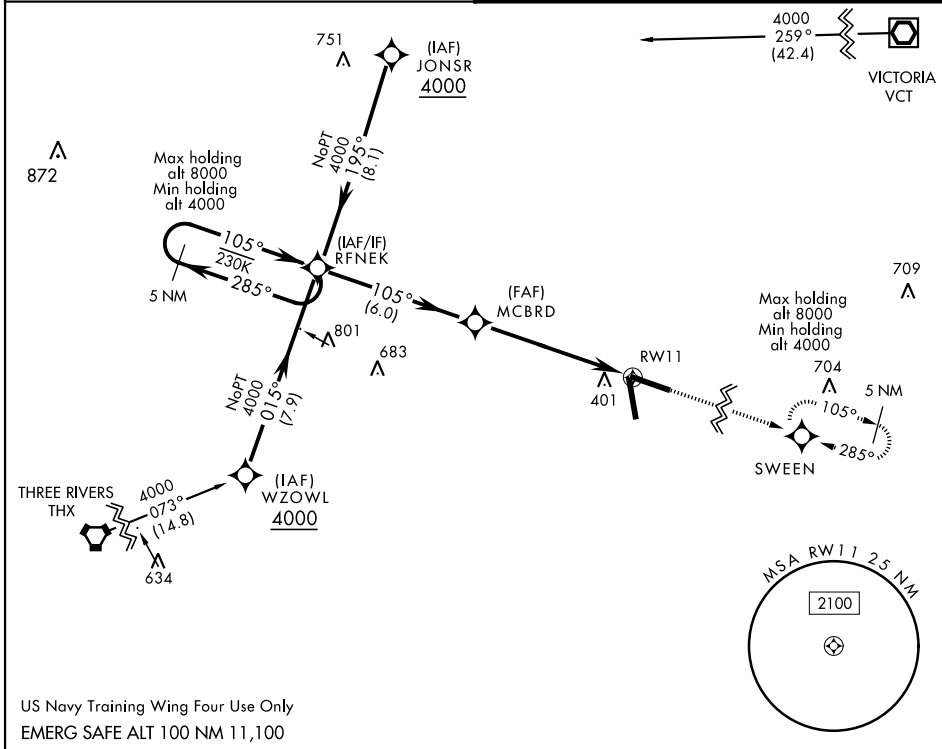
AL-2440 [USN]

GOLIAD NOLF (KNGT)

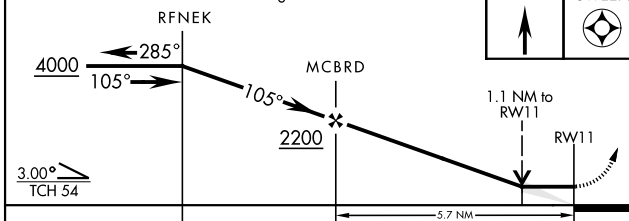
RNP APCH - DME/DME RNP-0.3 NA.

MISSED APPROACH: Climb to 4000 direct SWEEN and hold, continue climb-in-hold to 4000.

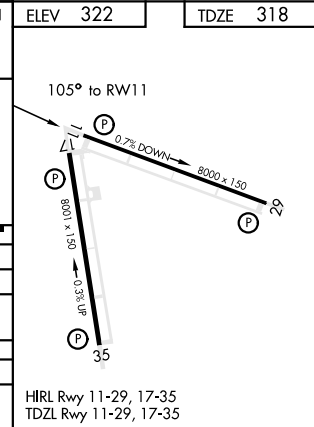
ASOS <b>353.675</b>	CTAF <b>132.875 307.075</b>
------------------------	--------------------------------



VDP NA with Beeville Muni altimeter setting.



CATEGORY	A	B	C	D
LNAV MDA	720-1 402	(400-1)	720-1½ 402	(400-1½)
<b>C</b> CIRCLING	760-1 438 (500-1)	780-1 458 (500-1)	780-1½ 458 (500-1½)	880-2 558 (600-2)
<b>BEEVILLE MUNI ALTIMETER SETTING MINIMA</b>				
LNAV MDA	760-1 442 (500-1)	760-1½ 442 (500-1½)	800-1½ 478 (500-1½)	880-2 558 (600-2)
<b>C</b> CIRCLING	800-1 478 (500-1)			



# RNAV (GPS) RWY 11

SC-3, 11 AUG 2022 to 08 SEP 2022

SC-3, 11 AUG 2022 to 08 SEP 2022