

RNAV (GPS) RWY 17

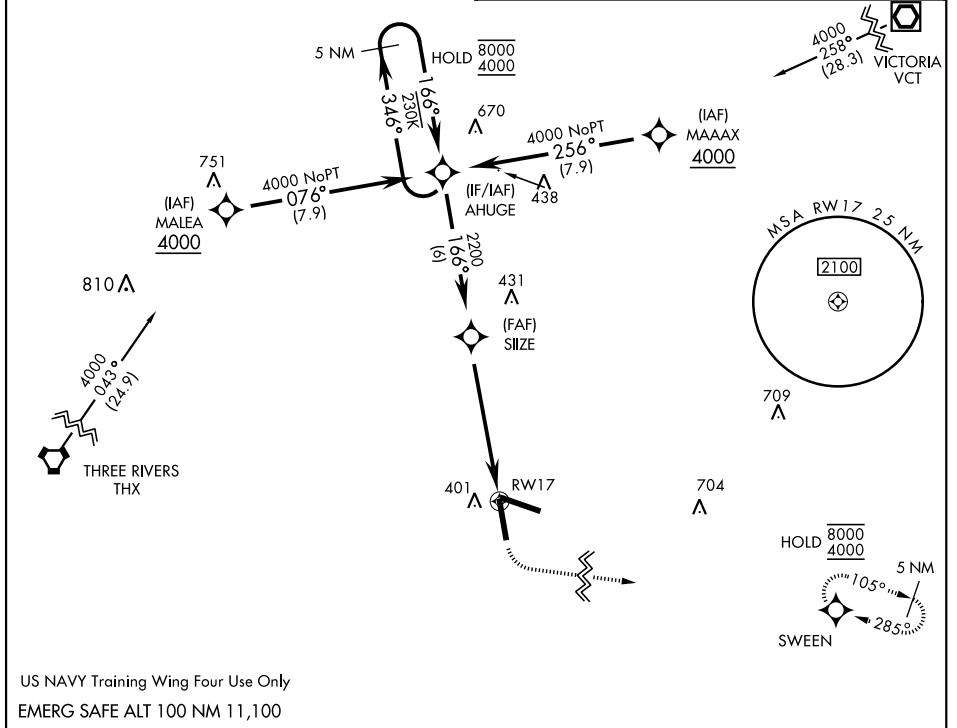
APCH CRS	Rwy Idg	8001
166°	TDZE	322
	Arpt Elev	322

AL-2440 [USN]

GOLIAD NOLF (KNGT)

RNP APCH - DME/DME RNP-0.3 NA.	MISSED APPROACH: Climb to 900 then climbing left turn to 4000 direct SWEENEY and hold, continue climb-in-hold to 4000.
--------------------------------	------------------------------------------------------------------------------------------------------------------------

ASOS 353.675	CTAF 132.875 307.075
------------------------	--------------------------------



SC-3, 11 AUG 2022 to 08 SEP 2022

SC-3, 11 AUG 2022 to 08 SEP 2022

US NAVY Training Wing Four Use Only
EMERG SAFE ALT 100 NM 11,100

VDP NA with Beeville Muni altimeter setting.	900	4000	SWEENEY	ELEV 322	TDZE 322
CATEGORY	A	B	C	D	
LNAV MDA	640-1 318 (400-1)				
CIRCLING	760-1 438 (500-1)	780-1 458 (500-1)	780-1½ 458 (500-1½)	880-2 558 (600-2)	
BEEVILLE MUNI ALTIMETER SETTING MINIMA					
LNAV MDA	680-1 358 (400-1)				
CIRCLING	800-1 478 (500-1)	800-1½ 478 (500-1½)		880-2 558 (600-2)	
					HIRL Rwy 11-29, 17-35 TDZL Rwy 11-29, 17-35

RNAV (GPS) RWY 17