

# RNAV (GPS) RWY 29

APCH CRS	Rwy Idg	8000
285°	TDZE	285
	Arpt Elev	322

AL-2440 [USN]

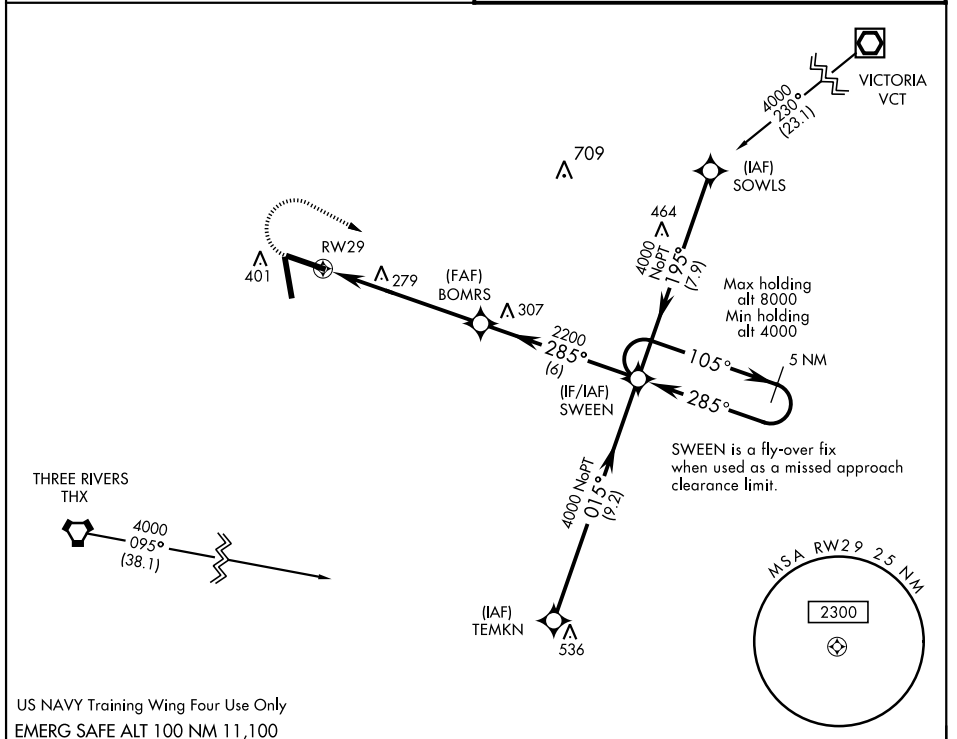
GOLIAD NOLF (KNGT)

RNP APCH - DME/DME RNP-0.3 NA.

MISSED APPROACH: Climb to 900 then climbing right turn to 4000 direct SWEEN and hold, continue climb-in-hold to 4000.

ASOS  
353.675

CTAF  
132.875 307.075



US NAVY Training Wing Four Use Only  
EMERG SAFE ALT 100 NM 11,100

	VDP NA with Beeville Muni altimeter setting.				ELEV 322	TDZE 285
CATEGORY	A	B	C	D		
LNAV MDA	580-1		295	(300-1)		
CIRCLING	760-1 438 (500-1)	780-1 458 (500-1)	780-1½ 458 (500-1½)	880-2 558 (600-2)		
BEEVILLE MUNI ALTIMETER SETTING MINIMA						
LNAV MDA	640-1		355	(400-1)		
CIRCLING	800-1	478 (500-1)	800-1½ 478 (500-1½)	880-2 558 (600-2)		
					HIRL Rwy 11-29, 17-35 TDZL Rwy 11-29, 17-35	

# RNAV (GPS) RWY 29

SC-3, 11 AUG 2022 to 08 SEP 2022

SC-3, 11 AUG 2022 to 08 SEP 2022