

RNAV (GPS) RWY 35

APCH CRS	Rwy ldg	8001
346°	TDZE	307
	Arpt Elev	322

AL-2440 [USN]

GOLIAD NOLF (KNGT)

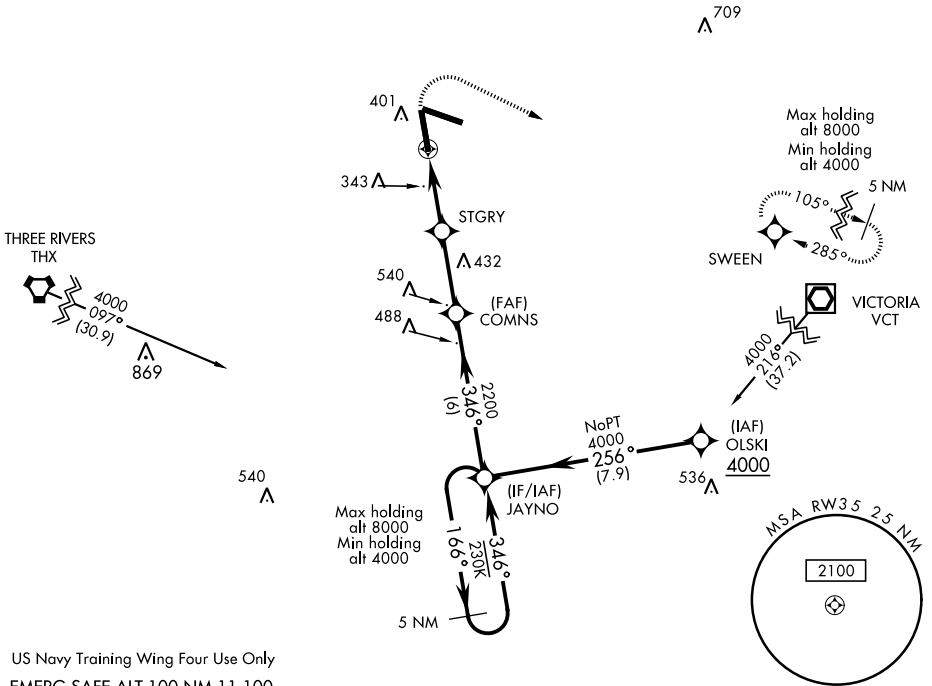
RNP APCH - DME/DME RNP-0.3 NA.

MISSED APPROACH: Climb to 900 then climbing right turn to 4000 direct SWEEN and hold, continue climb-in-hold to 4000.

When local altimeter setting not received, use Beeville Muni altimeter setting.

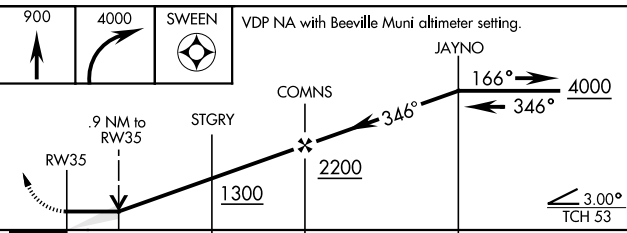
ASOS
353.675

CTAF
132.875 307.075



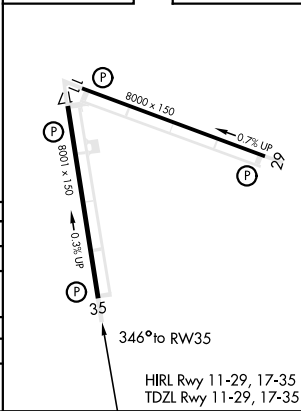
SC-3, 11 AUG 2022 to 08 SEP 2022

SC-3, 11 AUG 2022 to 08 SEP 2022



ELEV	322	TDZE	307
------	-----	------	-----

CATEGORY	A	B	C	D
LNAV MDA	640-1 333 (400-1)			
CIRCLING	760-1 438 (500-1)	780-1 458 (500-1)	780-1½ 458 (500-1½)	880-2 558 (600-2)
BEEVILLE MUNI ALTIMETER SETTING MINIMA				
LNAV MDA	680-1 373 (400-1)			
CIRCLING	800-1 478 (500-1)	800-1½ 478 (500-1½)		880-2 558 (600-2)



RNAV (GPS) RWY 35