

RNAV (GPS) RWY 6

APCH CRS	Rwy Idg	6000
063°	TDZE	387
	Arprt Elev	433

AL-6341 [USA]

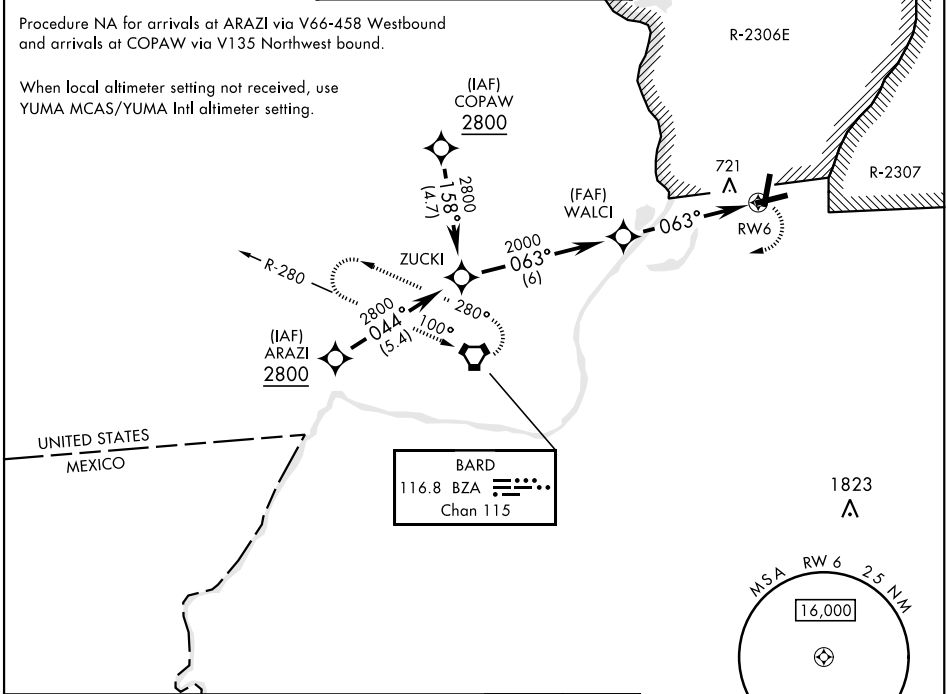
LAGUNA AAF (KLGf)

▽ DME/DME RNP-0.3 NA	MISSED APPROACH: Climbing right turn to 3600 direct BZA VORTAC and hold.
▲ NA Procedure NA when airfield closed.	

YUMA APP CON 124.7 371.975	LAGUNA TOWER ★ 126.2 (CTAF) 242.175	GND CON 121.8 0 229.4
--------------------------------------	---	---------------------------------

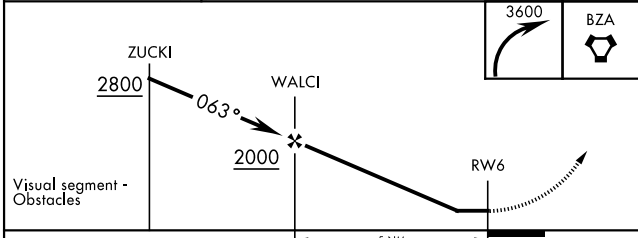
Procedure NA for arrivals at ARAZI via V66-458 Westbound and arrivals at COPAW via V135 Northwest bound.

When local altimeter setting not received, use YUMA MCAS/YUMA Intl altimeter setting.



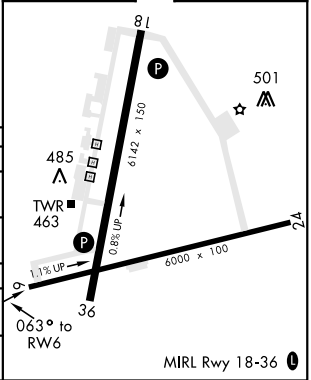
SW-4, 11 AUG 2022 to 08 SEP 2022

SW-4, 11 AUG 2022 to 08 SEP 2022



ELEV 433	TDZE 387
----------	----------

CATEGORY	A	B	C	D
LNVA MDA	1020-1	633 (600-1)	1020-1¾ 633 (600-1¾)	1020-2 633 (600-2)
CIRCLING	1080-1	647 (700-1)	1080-1¾ 647 (700-1¾)	1080-2 647 (700-2)
YUMA MCAS/YUMA Intl ALTIMETER SETTING				
LNVA MDA	1100-1	713 (700-1)	1100-2 713 (700-2)	1100-2¼ 713 (700-2¼)
CIRCLING	1160-1	727 (800-1)	1160-2 727 (800-2)	1160-2¼ 727 (800-2¼)



RNAV (GPS) RWY 6