

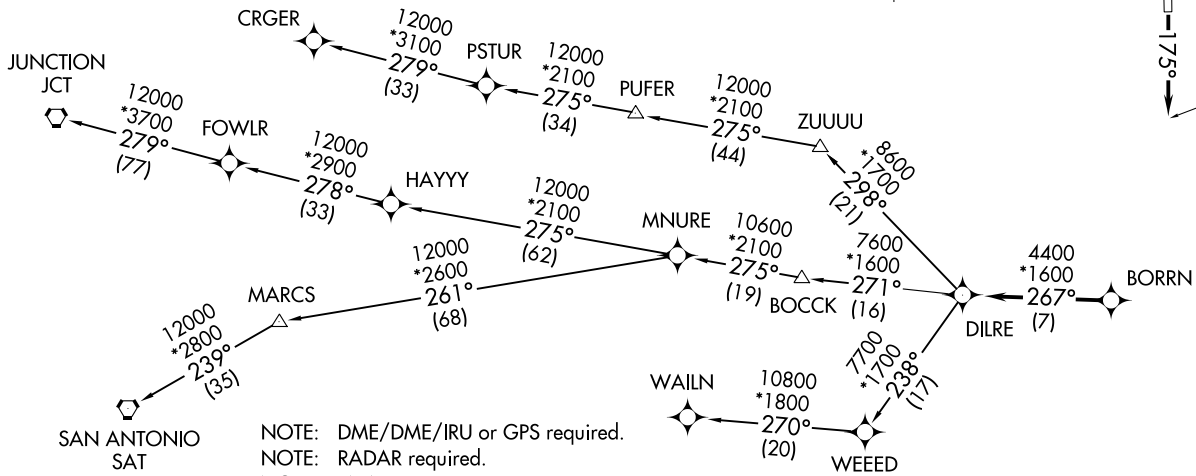
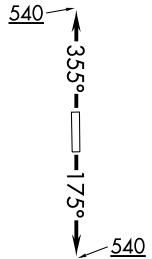
**TOP ALTITUDE:
ASSIGNED BY ATC**

(BORRN4, BORRN) 2111Z
AL-6453 (FAA)
TEXAS GULF COAST RGNL (LBX)
ANGLETON/LAKE JACKSON, TEXAS

BORRN FOUR DEPARTURE (RNAV)
(BORRN4, BORRN) 25APR19
ANGLETON/LAKE JACKSON, TEXAS
TEXAS GULF COAST RGNL (LBX)

ASOS
119.925
CTAF
123.0
CLNC DEL
125.2
HOUSTON DEP CON
134.45 284.0

TAKEOFF MINIMUMS:
Rwy 17, 35: Standard with minimum
climb of 500' per NM to 540.



NOTE: DME/DME/IRU or GPS required.
NOTE: RADAR required.
NOTE: RNAV 1.
NOTE: CRGER TRANSITION ATC assigned only
for aircraft departing 54T, AXH, EFD, GLS,
HPY, IWS, LBX, LVJ, SGR, TME, TØØ, T41.

(NARRATIVE ON FOLLOWING PAGE)

NOTE: Chart not to scale.

BORRN FOUR DEPARTURE (RNAV)



DEPARTURE ROUTE DESCRIPTION

TAKEOFF RWY 17: Climb on heading 175° to 540, for RADAR vectors to BORRN, thence. . . .

TAKEOFF RWY 35: Climb on heading 355° to 540, for RADAR vectors to BORRN, thence. . . .

. . . .on track 267° to DILRE, then on (transition). Maintain ATC assigned altitude. Expect filed altitude 10 minutes after departure.

CRGER TRANSITION (BORRN4.CRGER)

JUNCTION TRANSITION (BORRN4.JCT)

MNURE TRANSITION (BORRN4.MNURE)

SAN ANTONIO TRANSITION (BORRN4.SAT)

WAILN TRANSITION (BORRN4.WAILN)

SC-5, 11 AUG 2022 to 08 SEP 2022

SC-5, 11 AUG 2022 to 08 SEP 2022