

(CRIED1.CRIED) 21280

# CRIED ONE DEPARTURE

AL-6453 (FAA)

TEXAS GULF COAST RGNL (L.B.X)  
ANGLETON/LAKE JACKSON, TEXAS

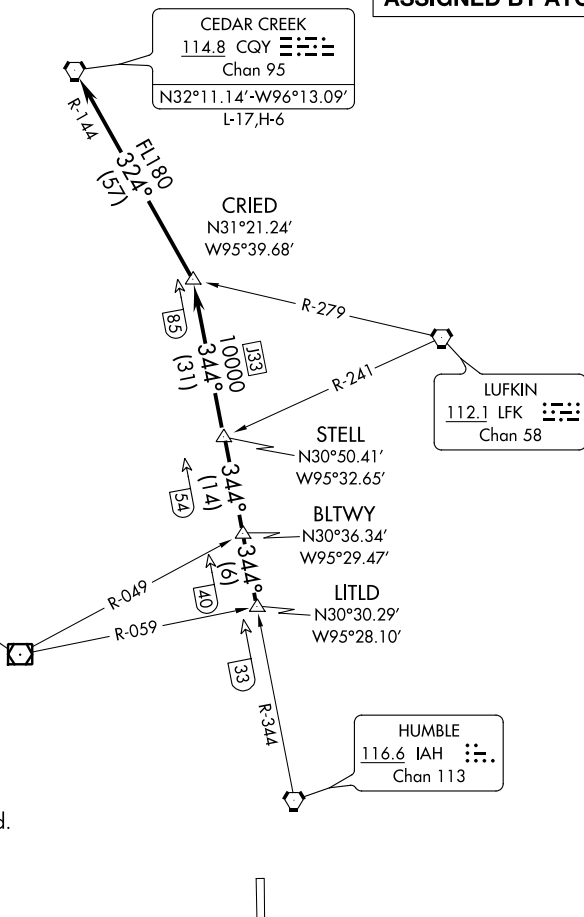
ASOS  
119.925  
CLNC DEL  
125.2  
CTAF  
123.0  
HOUSTON DEP CON  
134.45 284.0

**TOP ALTITUDE:  
ASSIGNED BY ATC**

NOTE: RADAR required.

NAVASOTA  
115.9 TNV  
Chan 106

TAKEOFF MINIMUMS  
Rwys 17, 35: Standard.



NOTE: Chart not to scale.

## DEPARTURE ROUTE DESCRIPTION

TAKEOFF ALL RUNWAYS: When entering controlled airspace, climb on assigned heading for RADAR vectors to LITLD INT. Maintain ATC assigned altitude. Expect filed altitude 10 minutes after departure, thence . . . .

. . . . on IAH R-344 to STELL INT, then on IAH R-344 to CRIED INT, then left turn on CQY R-144 to CQY VORTAC.

# CRIED ONE DEPARTURE

(CRIED1.CRIED) 07OCT21

ANGLETON/LAKE JACKSON, TEXAS  
TEXAS GULF COAST RGNL (L.B.X)

SC-5, 11 AUG 2022 to 08 SEP 2022