

GIFFA ONE DEPARTURE

AL-6453 (FAA)

TEXAS GULF COAST RGNL (LBX)
ANGLETON/LAKE JACKSON, TEXAS

ASOS
119.925
CLNC DEL
125.2
CTAF
123.0
HOUSTON DEP CON
134.45 284.0

**TOP ALTITUDE:
ASSIGNED BY ATC**

NOTE: RADAR required.
NOTE: For aircraft destined for the DFW
terminal area only.

LEONA
110.8 LOA
Chan 45

CEDAR CREEK
114.8 CQY
Chan 95

GIFFA
N31°22.89'
W95°15.10'
L-19-21, H-6
10000

(85)

(44)

(41)

(31)

(41)

DAISETTA
116.9 DAS
Chan 116

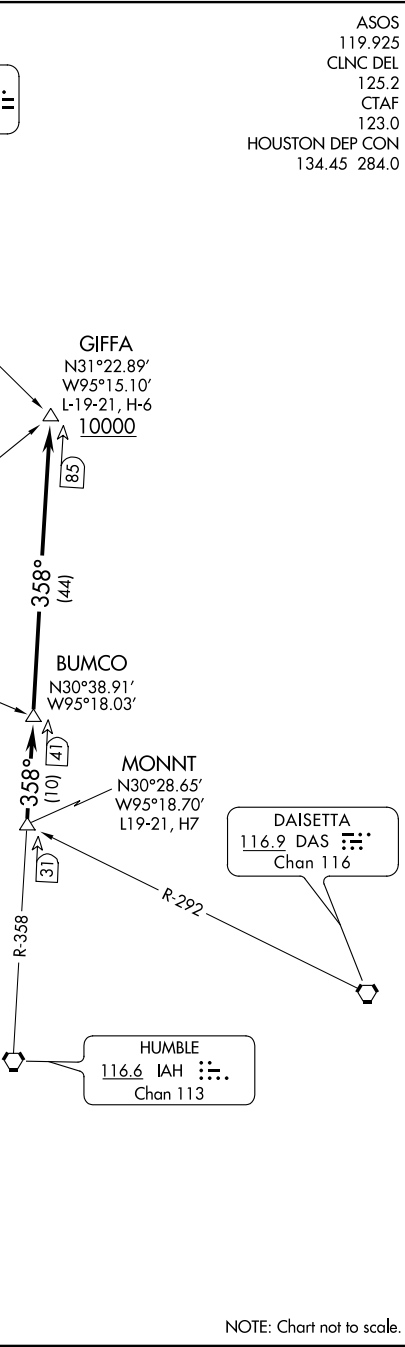
HUMBLE
116.6 IAH
Chan 113

TAKEOFF MINIMUMS
Rwys 17, 35: Standard.

DEPARTURE ROUTE DESCRIPTION

TAKEOFF ALL RUNWAYS: When entering controlled airspace, climb on assigned heading for RADAR vectors to MONNT INT. Maintain ATC assigned altitude. Expect filed altitude 10 minutes after departure, thence. . . .

. . . . on IAH R-358 to cross GIFFA INT at or above 10000.



NOTE: Chart not to scale.

GIFFA ONE DEPARTURE

SC-5, 11 AUG 2022 to 08 SEP 2022

SC-5, 11 AUG 2022 to 08 SEP 2022