

(LFK3.LFK) 21280

AL-6453 (FAA)

TEXAS GULF COAST RGNL (L.BX)  
ANGLETON/LAKE JACKSON, TEXAS

# LUFKIN THREE DEPARTURE

ASOS  
119.925  
CLNC DEL  
125.2  
CTAF  
123.0  
HOUSTON DEP CON  
134.45 284.0

**TOP ALTITUDE:  
ASSIGNED BY ATC**

LITTLE ROCK
113.9 LIT
Chan 86
N34°40.66'
W92°10.83'
L-18, H-6

NOTE: RADAR and DME required.  
NOTE: For aircraft destined LIT or  
overflying LIT or PXV.

LUFKIN
112.1 LFK
Chan 58
N31°09.75'
W94°43.01'

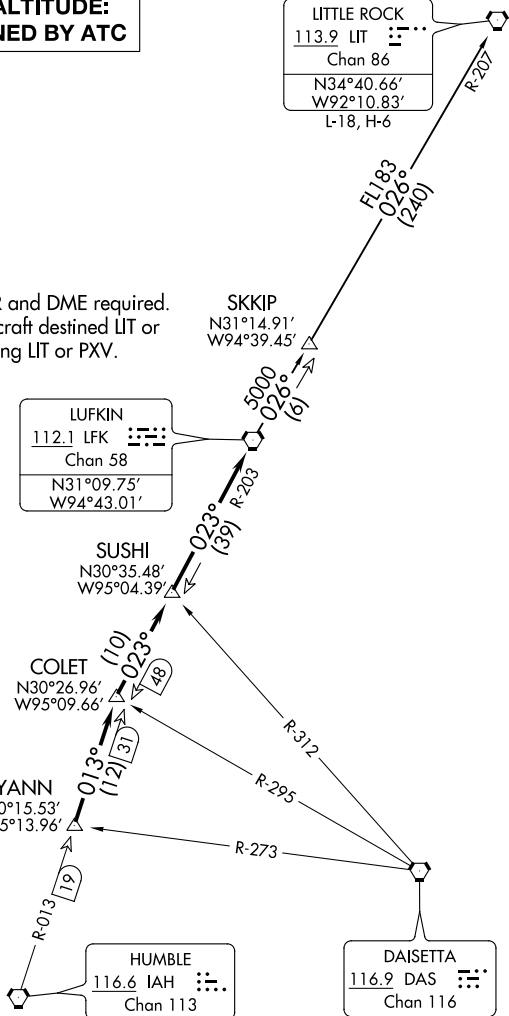
SUSHI
N30°35.48'
W95°04.39'

COLET
N30°26.96'
W95°09.66'

KYANN
N30°15.53'
W95°13.96'

HUMBLE
116.6 IAH
Chan 113

DAISETTA
116.9 DAS
Chan 116



TAKEOFF MINIMUMS  
Rwys 17, 35: Standard.

NOTE: Chart not to scale.

(NARRATIVE ON FOLLOWING PAGE)

# LUFKIN THREE DEPARTURE

(LFK3.LFK) 07OCT21

ANGLETON/LAKE JACKSON, TEXAS  
TEXAS GULF COAST RGNL (L.BX)

SC-5, 11 AUG 2022 to 08 SEP 2022

SC-5, 11 AUG 2022 to 08 SEP 2022

# LUFKIN THREE DEPARTURE



## DEPARTURE ROUTE DESCRIPTION

TAKEOFF ALL RUNWAYS: When entering controlled airspace, climb on assigned heading for RADAR vectors to KYANN INT. Maintain ATC assigned altitude. Expect filed altitude 10 minutes after departure, thence. . . .

. . . .on IAH R-013 to COLET INT, then right turn on LFK R-203 to LFK VORTAC.

LITTLE ROCK TRANSITION (LFK3.LIT): From over LFK VORTAC on LFK R-026 to SKKIP INT, then on LFK R-026 and LIT R-207 to LIT VORTAC.

SC-5, 11 AUG 2022 to 08 SEP 2022

SC-5, 11 AUG 2022 to 08 SEP 2022