

**TOP ALTITUDE:
ASSIGNED BY ATC**

(PSX2, PSX) 21280
PALACIOS TWO DEPARTURE

AL-6453 (FAA)

TEXAS GULF COAST RGNL (L, BX)
ANGLETON/LAKE JACKSON, TEXAS



TAKEOFF MINIMUMS
Rwys 17, 35: Standard.

ASOS
119.925
CLNC DEL
125.2
CTAF
123.0
HOUSTON DEP CON
134.45 284.0

FORT STOCKTON
116.9 FST
Chan 116
N30°57.13'
W102°58.54'
L-19, H-6

SAN ANTONIO
116.8 SAT
Chan 115
N29°38.64'-W98°27.68'
L-19, H-7

EAGLE LAKE
116.4 ELA
Chan 111

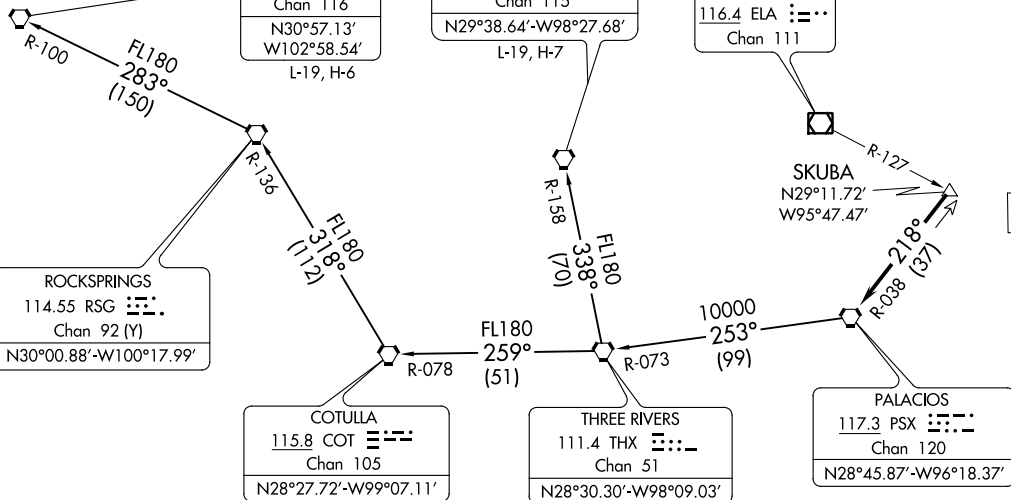
SKUBA
N29°11.72'
W95°47.47'

ROCKSPRINGS
114.55 RSG
Chan 92 (Y)
N30°00.88'-W100°17.99'

COTULLA
115.8 COT
Chan 105
N28°27.72'-W99°07.11'

THREE RIVERS
111.4 THX
Chan 51
N28°30.30'-W98°09.03'

PALACIOS
117.3 PSX
Chan 120
N28°45.87'-W96°18.37'



NOTE: RADAR required.

NOTE: Chart not to scale.

(NARRATIVE ON FOLLOWING PAGE)

PALACIOS TWO DEPARTURE
(PSX2, PSX) 07OCT21

ANGLETON/LAKE JACKSON, TEXAS
TEXAS GULF COAST RGNL (L, BX)



DEPARTURE ROUTE DESCRIPTION

TAKEOFF ALL RUNWAYS: When entering controlled airspace, climb on assigned heading for RADAR vectors to SKUBA INT. Maintain ATC assigned altitude. Expect filed altitude 10 minutes after departure, thence

. . . . on PSX R-038 to PSX VORTAC.

FORT STOCKTON TRANSITION (PSX2.FST): From over PSX VORTAC on PSX R-253 and THX R-073 to THX VORTAC, then on THX R-259 and COT R-078 to COT VORTAC, then on COT R-318 and RSG R-136 to RSG VORTAC, then on RSG R-283 and FST R-100 to FST VORTAC.

SAN ANTONIO TRANSITION (PSX2.SAT): From over PSX VORTAC on PSX R-253 and THX R-073 to THX VORTAC, then on SAT R-158 to SAT VORTAC.

SC-5, 11 AUG 2022 to 08 SEP 2022

SC-5, 11 AUG 2022 to 08 SEP 2022