

WAAS CH 70316 W17A	APP CRS 175°	Rwy Idg 7000 TDZE 25 Apt Elev 25
--	------------------------	---

RNAV (GPS) RWY 17

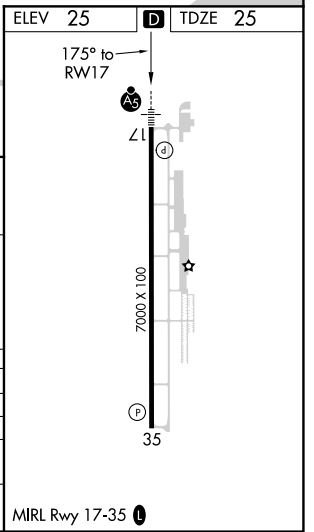
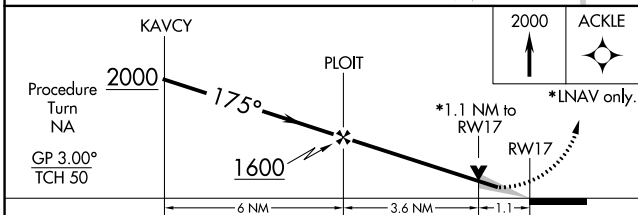
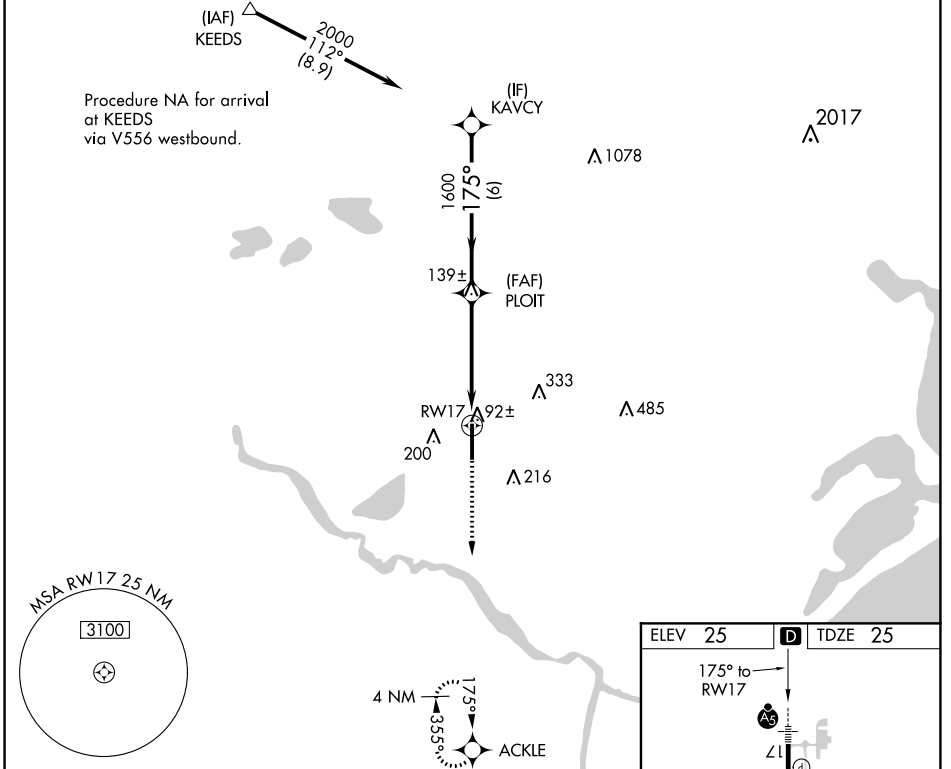
TEXAS GULF COAST RGNL (L.B.X)

⚠ DME/DME RNP-0.3 NA. Baro-VNAV NA below -16°C (4°F). When local altimeter setting not received, use William P. Hobby altimeter setting and increase all DAs/MDAs 100 feet and Circling Cat D visibility ¼ SM. Baro-VNAV and VDP NA when using William P. Hobby altimeter setting. Circling NA east of Rwy 17-35. For inop MALSR, increase LPV visibility to 1 mile all Cats, LNAV Cat D visibility to ¼ mile.

MALSR

MISSED APPROACH:
Climb to 2000 direct
ACKLE and hold.

ASOS 119.925	HOUSTON APP CON 134.45 284.0	CLNC DEL 125.2	UNICOM 123.0 (CTAF) Ⓛ
------------------------	--	--------------------------	--



CATEGORY	A	B	C	D
LPV DA		282-½	257 (300-½)	
LNAV/VNAV DA		360-¾	335 (400-¾)	
LNAV MDA		420-½	395 (400-½)	420-1 395 (400-1)
C CIRCLING	480-1¼ 455 (500-1¼)	500-1¼ 475 (500-1¼)	500-1½ 475 (500-1½)	620-2 595 (600-2)

SC-5, 11 AUG 2022 to 08 SEP 2022

SC-5, 11 AUG 2022 to 08 SEP 2022