

STRYA EIGHT DEPARTURE (RNAV)

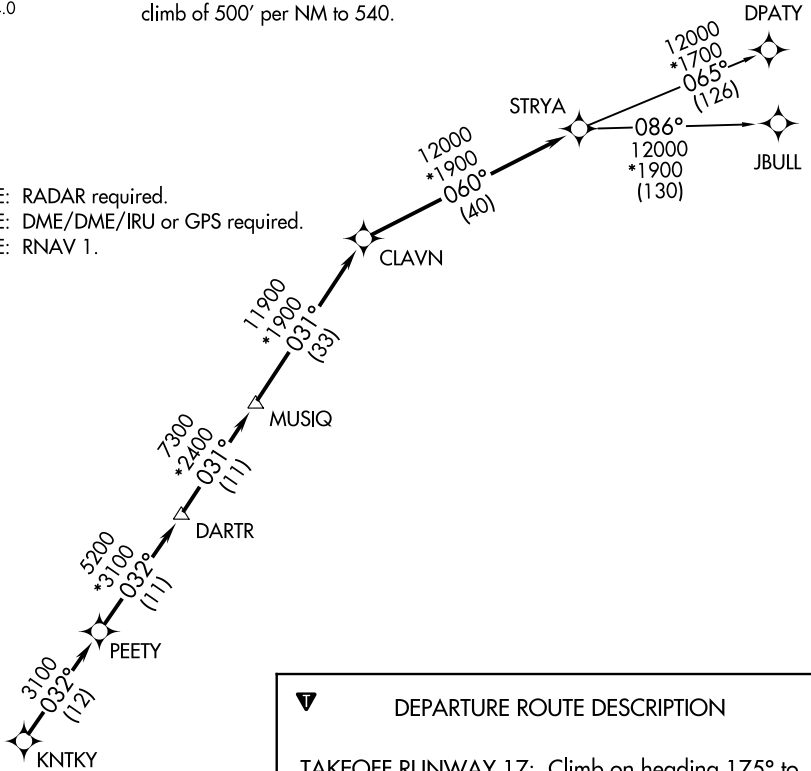
TOP ALTITUDE: ASSIGNED BY ATC

ASOS
119.925
CTAF
123.0
CLNC DEL
125.2
HOUSTON DEP CON
134.45 284.0

TAKEOFF MINIMUMS

Rwys 17, 35: Standard with minimum
climb of 500' per NM to 540.

NOTE: RADAR required.
NOTE: DME/DME/IRU or GPS required.
NOTE: RNAV 1.



DEPARTURE ROUTE DESCRIPTION

TAKEOFF RUNWAY 17: Climb on heading 175° to 540 for RADAR vectors to KNTKY, thence. . . .

TAKEOFF RUNWAY 35: Climb on heading 355° to 540 for RADAR vectors to KNTKY, thence. . . .

. . . .on track 032° to PEETY, then on track 032° to DARTR, then on track 031° to MUSIQ, then on track 031° to CLAVN, then on track 060° to STRYA, then on (transition). Maintain ATC assigned altitude. Expect filed altitude 10 minutes after departure.

DPATY TRANSITION (STRYA8.DPATY)
JBULL TRANSITION (STRYA8.JBULL)



NOTE: Chart not to scale.

SC-5, 11 AUG 2022 to 08 SEP 2022

SC-5, 11 AUG 2022 to 08 SEP 2022

STRYA EIGHT DEPARTURE (RNAV)

(STRYA8.STRYA) 07OCT21