

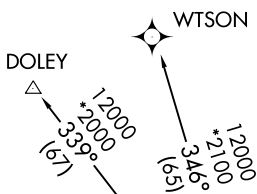
(STYCK8.STYCK) 21280

AL-6453 (FAA)

TEXAS GULF COAST RGNL (L.BX)

STYCK EIGHT DEPARTURE (RNAV)

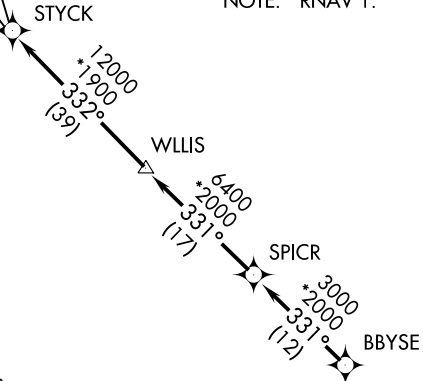
ANGLETON/LAKE JACKSON, TEXAS



**TOP ALTITUDE:
ASSIGNED BY ATC**

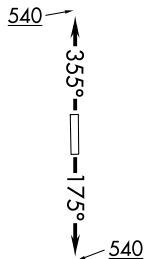
ASOS
119.925
CLNC DEL
125.2
CTAF
123.0
HOUSTON DEP CON
134.45 284.0

NOTE: RADAR required.
NOTE: DME/DME/IRU or GPS required.
NOTE: RNAV 1.



TAKEOFF MINIMUMS

Rwys 17, 35: Standard with minimum climb of 500' per NM to 540.



NOTE: Chart not to scale.



DEPARTURE ROUTE DESCRIPTION

TAKEOFF RUNWAY 17: Climb on heading 175° to 540 for RADAR vectors to BBYSE, thence. . .

TAKEOFF RUNWAY 35: Climb on heading 355° to 540 for RADAR vectors to BBYSE, thence. . .

. . . on track 331° to SPICR, then on track 331° to WLLIS, then on track 332° to STYCK, then on (transition). Maintain ATC assigned altitude. Expect filed altitude 10 minutes after departure.

DOLEY TRANSITION (STYCK8.DOLEY)

WTSON TRANSITION (STYCK8.WTSON)

STYCK EIGHT DEPARTURE (RNAV)

(STYCK8.STYCK) 07OCT21

ANGLETON/LAKE JACKSON, TEXAS

TEXAS GULF COAST RGNL (L.BX)

SC-5, 11 AUG 2022 to 08 SEP 2022

SC-5, 11 AUG 2022 to 08 SEP 2022