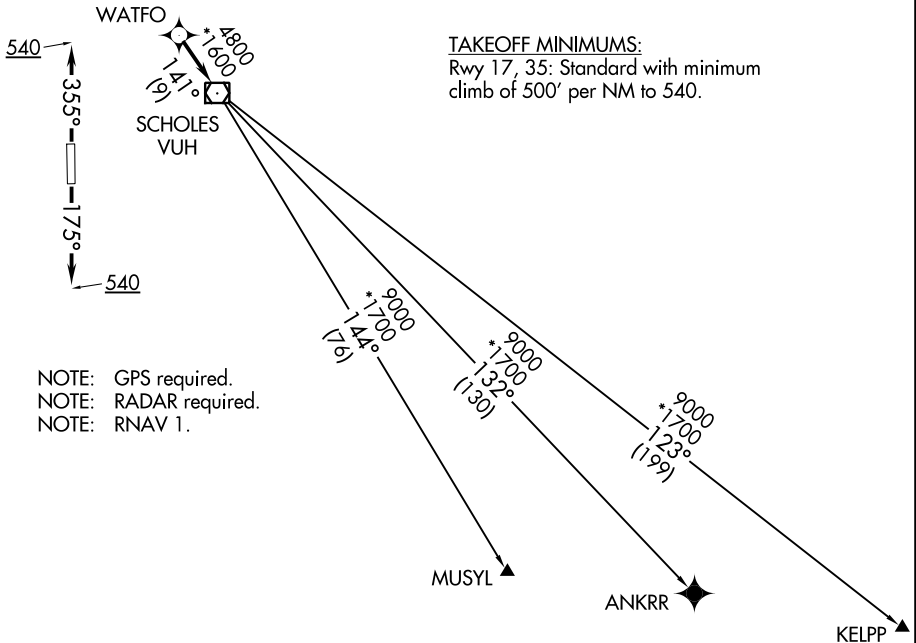


# WATFO FIVE DEPARTURE (RNAV)

ASOS  
119.925  
CTAF  
123.0  
CLNC DEL  
125.2  
HOUSTON DEP CON  
134.45 284.0

**TOP ALTITUDE:  
ASSIGNED BY ATC**



TAKEOFF MINIMUMS:  
Rwy 17, 35: Standard with minimum  
climb of 500' per NM to 540.

NOTE: GPS required.  
NOTE: RADAR required.  
NOTE: RNAV 1.

NOTE: Chart not to scale.



## DEPARTURE ROUTE DESCRIPTION

TAKEOFF RWY 17: Climb on heading 175° to 540, for RADAR vectors to WATFO, thence. . . .

TAKEOFF RWY 35: Climb on heading 355° to 540, for RADAR vectors to WATFO, thence. . . .

. . . on track 141° to VUH VOR/DME, then on (transition). Maintain ATC assigned altitude. Expect filed altitude 10 minutes after departure.

ANKRR TRANSITION (WATFO5.ANKRR)

KELPP TRANSITION (WATFO5.KELPP)

MUSYL TRANSITION (WATFO5.MUSYL)

# WATFO FIVE DEPARTURE (RNAV)

(WATFO5.WATFO) 25APR19