

SW-4, 11 AUG 2022 to 08 SEP 2022

ATIS
128.325
GND CON
124.4
CHANDLER TOWER ★
126.1 (Rwy 4L-22R)
133.1 (Rwy 4R-22L)
PHOENIX DEP CON
123.7 363.0

NOTE: RNAV 1.

NOTE: Turbojets and turboprops only.

NOTE: RADAR required.

NOTE: GPS required.

NOTE: SJN TRANSITION for ABQ terminal arrivals only.

NOTE: MAXXO TRANSITION ATC assigned only.

NOTE: Aircraft filing over DEN, RSK, ALS, and points north of ALS, file YOTES DEPARTURE.

NOTE: Aircraft filing over ABQ, CIM, FTI, and GCK, file LALUZ DEPARTURE.

NOTE: Aircraft filing over ACH, LBL, ONM, CNX, PNH, MMB, TCC, IRW and TXO, file FTHLS DEPARTURE.

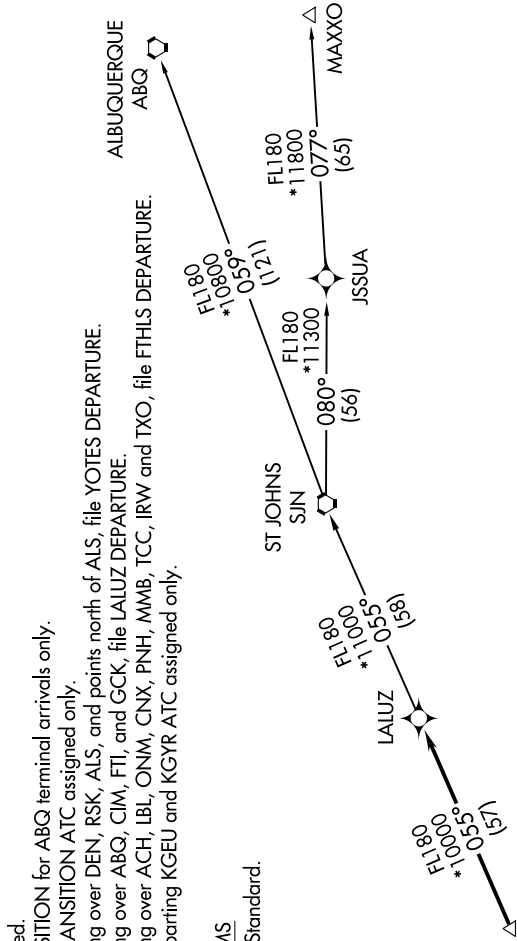
NOTE: Aircraft departing KGEU and KGYR ATC assigned only.

TAKEOFF MINIMUMS

Rwys 4L/R, 22L/R: Standard.



**TOP ALTITUDE:
ASSIGNED BY ATC**



▼ DEPARTURE ROUTE DESCRIPTION

TAKEOFF RUNWAYS 4L/R: Climb heading 038° or as assigned by ATC, thence. . . .

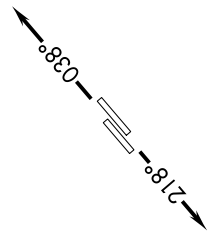
TAKEOFF RUNWAYS 22L/R: Climb heading 218° or as assigned by ATC, thence. . . .

. . . . expect RADAR vectors to FORPE, then on track 055° to LALUZ, then on (transition).
Maintain ATC assigned altitude, expect filed altitude 3 minutes after departure.

ALBUQUERQUE TRANSITION (LALUZ6.ABQ)

MAXXO TRANSITION (LALUZ6.MAXXO)

ST JOHNS TRANSITION (LALUZ6.SJN)



NOTE: Chart not to scale.

SW-4, 11 AUG 2022 to 08 SEP 2022