

|  |                        |                             |                                       |
|--|------------------------|-----------------------------|---------------------------------------|
| WAAS<br>CH <b>86711</b><br><b>W15A</b> | APP CRS<br><b>146°</b> | Rwy Idg<br>TDZE<br>Apt Elev | <b>5001</b><br><b>10</b><br><b>10</b> |
|--|------------------------|-----------------------------|---------------------------------------|

# RNAV (GPS) RWY 15

SOUTHLAND FLD (U XL)

RNP APCH-GPS

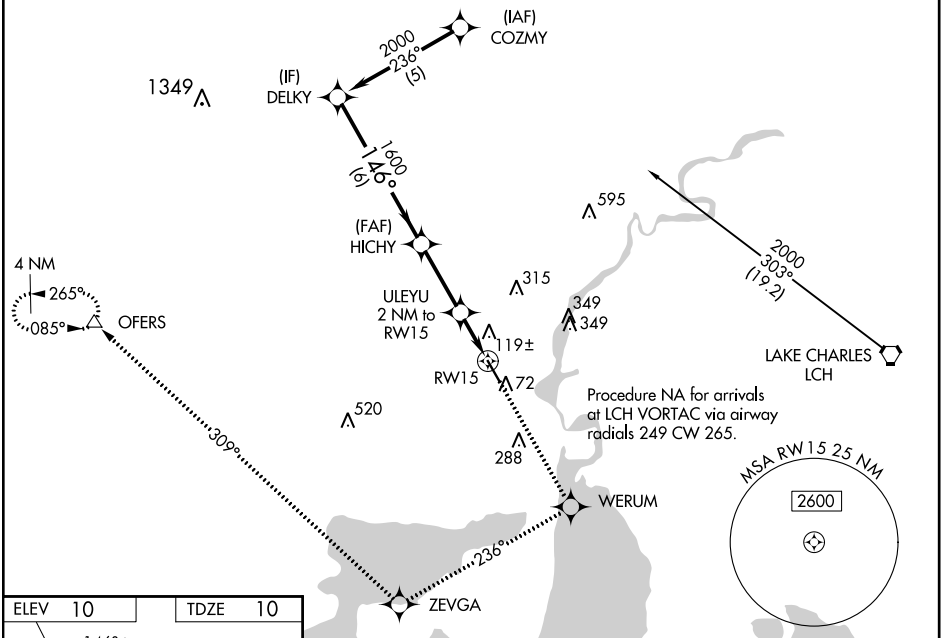
**⚠** Inoperative table does not apply to LNAV/VNAV. Baro-VNAV NA when using Lake Charles Rgnl altimeter setting. For uncompensated Baro-VNAV systems, LNAV/VNAV NA below -15°C or above 48°C. Rwy 15 helicopter visibility reduction below 3/4 SM NA. When local altimeter setting not received, use Lake Charles Rgnl altimeter setting and increase LPV DA to 438 feet and all visibilities 1/4 SM; increase LNAV/VNAV DA to 438 feet; increase all MDAs 20 feet and Circling visibility Cat C/D 1/4 SM. VDP NA when using Lake Charles Rgnl altimeter setting.

ODALS

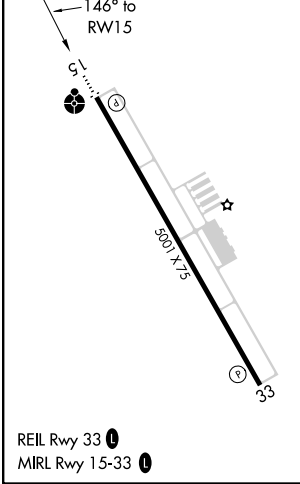


MISSED APPROACH: Climb to 2500 direct WERUM and via 236° track to ZEVGA and via 309° track to OFERS and hold.

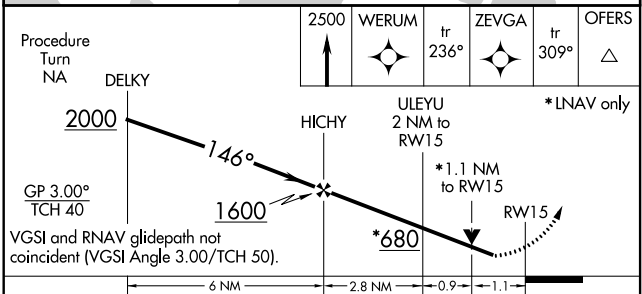
|                            |   |                                 |
|----------------------------|---|---------------------------------|
| AWOS-3PT<br><b>118.175</b> | LAKE CHARLES APP CON *<br><b>119.35 282.3</b> | UNICOM<br><b>122.8 (CTAF) 0</b> |
|----------------------------|---|---------------------------------|



|         |         |
|---------|---------|
| ELEV 10 | TDZE 10 |
|---------|---------|



REIL Rwy 33 **0**  
MIRL Rwy 15-33 **0**



| CATEGORY     | A                    | B                    | C                      | D                      |
|--------------|----------------------|----------------------|------------------------|------------------------|
| LPV DA       |                      | 309-1                | 299 (300-1)            |                        |
| LNAV/VNAV DA |                      | 419-1½               | 409 (500-1½)           |                        |
| LNAV MDA     |                      | 380-¾                | 370 (400-¾)            | 380-1¼<br>370 (400-1¼) |
| CIRCLING     | 420-1<br>410 (500-1) | 520-1<br>510 (600-1) | 680-1¾<br>670 (700-1¾) | 680-2<br>670 (700-2)   |

SULPHUR, LOUISIANA  
Orig-A 09SEP21

30° 08' N-93° 23' W

# RNAV (GPS) RWY 15

SC-4, 11 AUG 2022 to 08 SEP 2022

SC-4, 11 AUG 2022 to 08 SEP 2022