

# AIRPORT DIAGRAM

AL-6967 (FAA)

LAUGHLIN/BULLHEAD INTL (IFP)  
BULLHEAD CITY, ARIZONA

ATIS  
 119.825  
 BULLHEAD TOWER ★  
 123.9  
 GND CON  
 118.25  
 CLNC DEL  
 118.25 (When Tower Closed)  
**D**

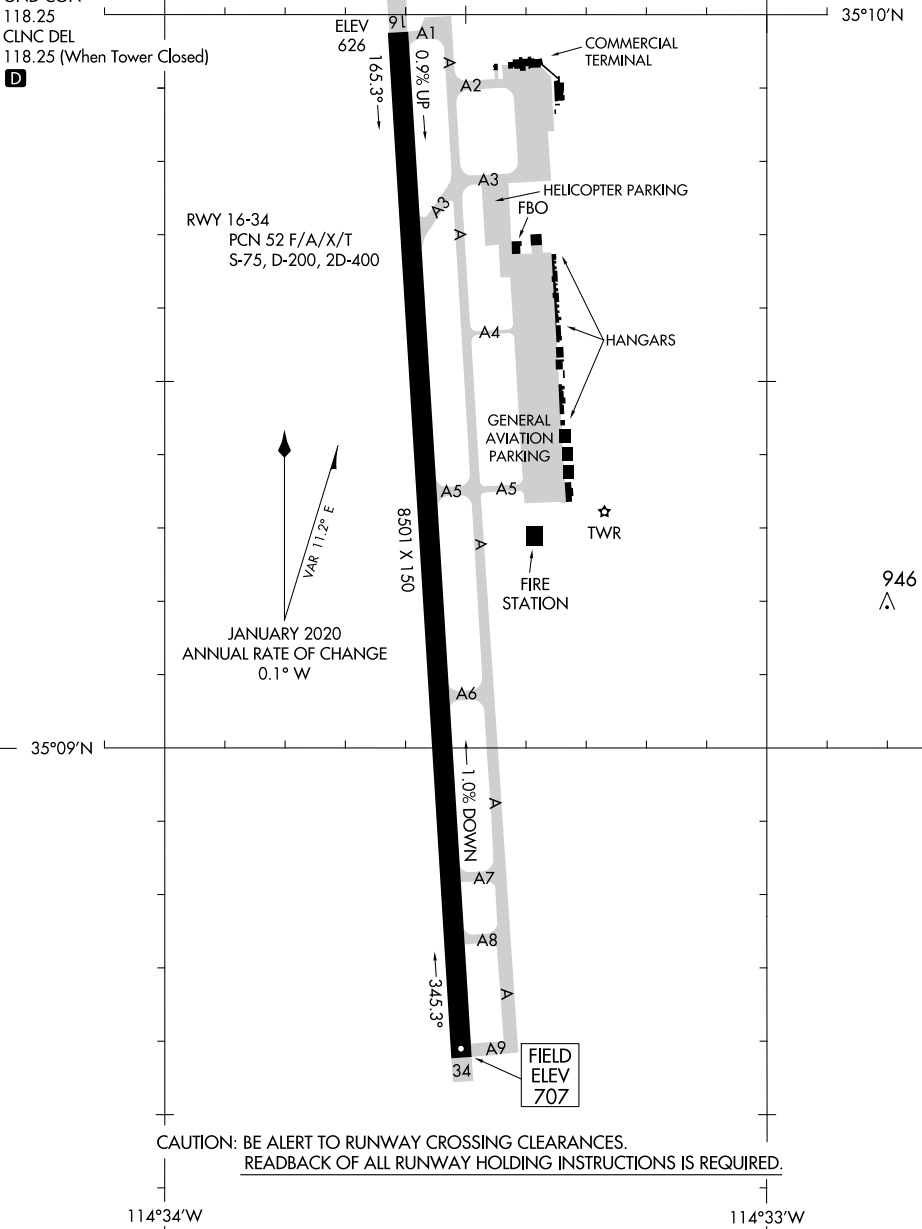
RWY 16-34  
 PCN 52 F/A/X/T  
 S-75, D-200, 2D-400

ELEV 626  
 1.65.3° ↓

8501 X 150

JANUARY 2020  
 ANNUAL RATE OF CHANGE  
 0.1° W  
 VAR 112° E

1.00% DOWN  
 345.3° ←



CAUTION: BE ALERT TO RUNWAY CROSSING CLEARANCES.  
 READBACK OF ALL RUNWAY HOLDING INSTRUCTIONS IS REQUIRED.

114°34'W

114°33'W

SW-4, 11 AUG 2022 to 08 SEP 2022

SW-4, 11 AUG 2022 to 08 SEP 2022

# AIRPORT DIAGRAM

BULLHEAD CITY, ARIZONA  
LAUGHLIN/BULLHEAD INTL (IFP)