

WAAS CH 82624 W16A	APP CRS 164°	Rwy Idg TDZE Apt Elev	8500 646 707
--	------------------------	-----------------------------	---

RNAV (GPS) RWY 16

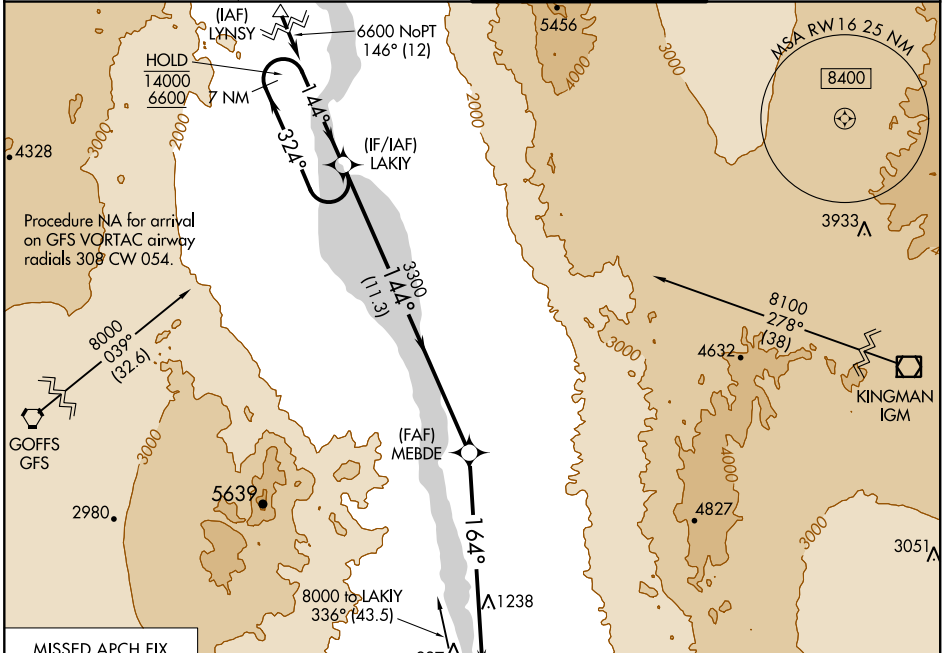
LAUGHLIN/BULLHEAD INTL (IFP)

RNP APCH.

- Procedure NA at night.
- Rwy 16 helicopter visibility reduction below 3/4 SM NA.

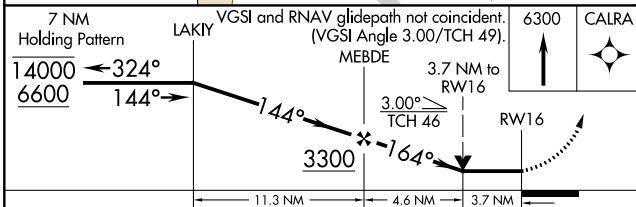
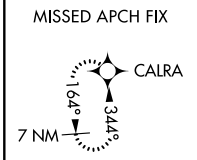
MISSED APPROACH: Climb to 6300 direct CALRA and hold, continue climb-in-hold to 6300.

ATIS ★ 119.825	LOS ANGELES CENTER 134.65 360.65	BULLHEAD TOWER ★ 123.9 (CTAF) 0	GND CON 118.25
--------------------------	--	---	--------------------------

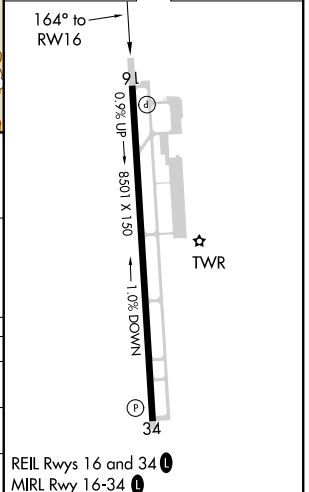


Procedure NA for arrival on GFS VORTAC airway radials 308 CW 054.

Procedure NA for arrival on EED VORTAC airway radials 257 CW 026.



ELEV 707	TDZE 646
----------	----------



CATEGORY	A	B	C	D
LP MDA	1860-1 1/4 1214 (1200-1 1/4)	1860-1 1/2 1214 (1200-1 1/2)	1860-3	1214 (1200-3)
LNAV MDA	1860-1 1/4 1214 (1200-1 1/4)	1860-1 1/2 1214 (1200-1 1/2)	1860-3	1214 (1200-3)
CIRCLING	1860-1 1/4 1153 (1200-1 1/4)	1860-1 1/2 1153 (1200-1 1/2)	1860-3 1153 (1200-3)	2340-3 1633 (1700-3)

SW-4, 11 AUG 2022 to 08 SEP 2022

SW-4, 11 AUG 2022 to 08 SEP 2022