

(BRUTE7.BRUTE) 22251

BRUTE SEVEN DEPARTURE

AL-251 (FAA)

ROGUE VALLEY INTL-MEDFORD (MFR)
MEDFORD, OREGON

**TOP ALTITUDE:
11000**

ATIS 127.25
 GND CON 121.8
 MEDFORD TOWER* 119.4 (CTAF) 257.8
 CASCADE DEP CON* 124.3 379.9
 SEATTLE CENTER 124.85 306.3

ROSEBURG
 108.2 RBG
 Chan 19

ROGUE VALLEY
 113.6 OED
 Chan 83

MEDFORD
 356 MEF
 N42° 23.50' - W122° 52.73'

FORT JONES
 116.25 FJS
 Chan 109(Y)

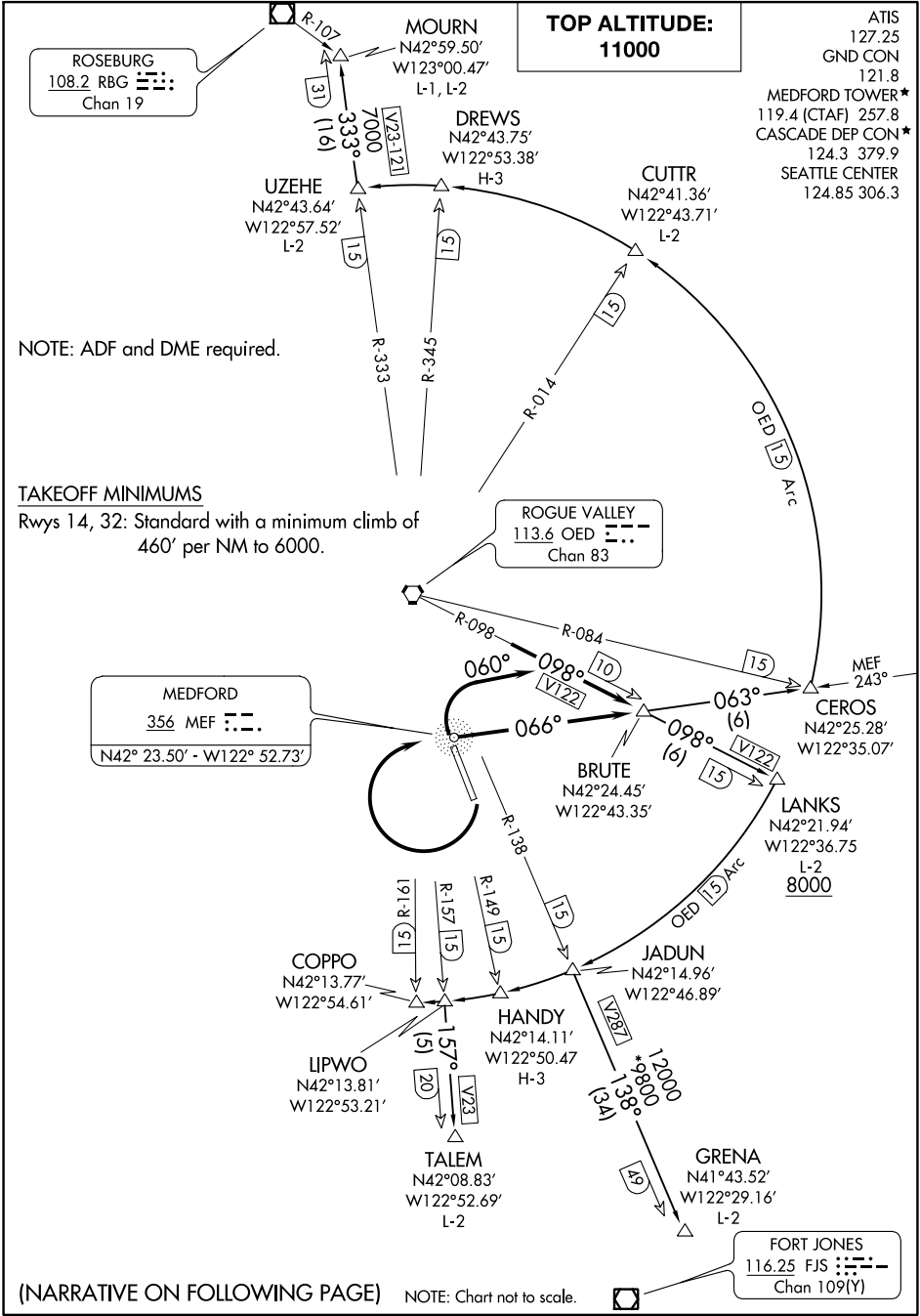
NOTE: ADF and DME required.

TAKEOFF MINIMUMS

Rwys 14, 32: Standard with a minimum climb of 460' per NM to 6000.

NW-1, 08 SEP 2022 to 06 OCT 2022

NW-1, 08 SEP 2022 to 06 OCT 2022



BRUTE SEVEN DEPARTURE

(BRUTE7.BRUTE) 21JUL16

MEDFORD, OREGON
ROGUE VALLEY INTL-MEDFORD (MFR)



DEPARTURE ROUTE DESCRIPTION

TAKEOFF RUNWAY 14: Climbing right turn direct MEF NDB, depart MEF NDB bearing 066° to BRUTE INT. Thence. . . .

TAKEOFF RUNWAY 32: Climbing right turn heading 060° and OED VORTAC R-098 to BRUTE INT. Thence. . . .

. . . . via (transition) or (assigned route). Maintain 11000 or assigned altitude.

COPPO TRANSITION (BRUTE7.COPPO): From over BRUTE INT on OED VORTAC R-098 to LANKS DME, then on the OED VORTAC 15 DME Arc CW to COPPO DME.

CUTTR TRANSITION (BRUTE7.CUTTR): From over BRUTE INT on MEF NDB 063° to CEROS INT, then on the OED VORTAC 15 DME Arc CCW to CUTTR DME.

DREWS TRANSITION (BRUTE7.DREWS): From over BRUTE INT on MEF NDB 063° to CEROS INT, then on the OED VORTAC 15 DME Arc CCW to DREWS DME.

GRENA TRANSITION (BRUTE7.GRENA): From over BRUTE INT on OED VORTAC R-098 to LANKS DME, then on the OED VORTAC 15 DME Arc CW to JADUN DME, then on OED VORTAC R-138 to GRENA DME.

HANDY TRANSITION (BRUTE7.HANDY): From over BRUTE INT on OED VORTAC R-098 to LANKS DME, then on the OED VORTAC 15 DME Arc CW to HANDY DME.

LANKS TRANSITION (BRUTE7.LANKS): From over BRUTE INT on OED VORTAC R-098 to LANKS DME.

MOURN TRANSITION (BRUTE7.MOURN): From over BRUTE INT on MEF NDB 063° to CEROS INT, then on the OED VORTAC 15 DME Arc CCW to UZEHE DME, then on OED VORTAC R-333 to MOURN INT.

TALEM TRANSITION (BRUTE7.TALEM): From over BRUTE INT on OED VORTAC R-098 to LANKS DME, then on the OED VORTAC 15 DME Arc CW to LIPWO DME, then on OED VORTAC R-157 to TALEM DME.

UZEHE TRANSITION (BRUTE7.UZEHE): From over BRUTE INT on MEF NDB 063° to CEROS INT, then on the OED VORTAC 15 DME Arc CCW to UZEHE DME.

NW-1, 08 SEP 2022 to 06 OCT 2022

NW-1, 08 SEP 2022 to 06 OCT 2022