

APP CRS	Rwy Idg	8800
323°	TDZE	1335
	Apt Elev	1335

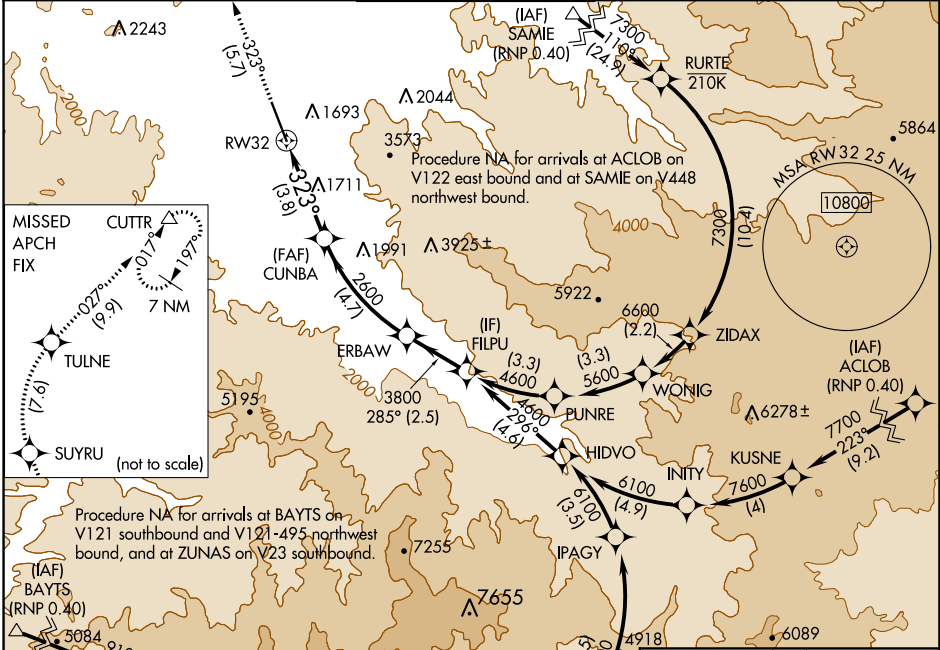
RNAV (RNP) RWY 32

ROGUE VALLEY INTL-MEDFORD (MFR)

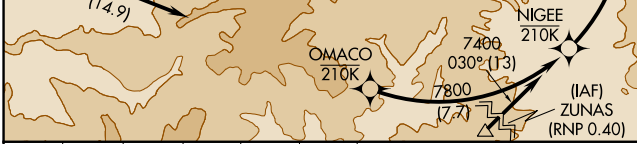
GPS required. RF required. For uncompensated Baro-VNAV systems, procedure NA below -8°C (17°F) or above 45°C (113°F).

MISSED APPROACH: Climb to 9000 on track 323° to SUYRU, right turn to TULNE, then on track 027° to CUTTR and hold, continue climb-in-hold to 9000.

ATIS 127.25	CASCADE APP CON * 124.3 379.9	MEDFORD TOWER * 119.4 (CTAF) 0 257.8	GND CON 121.8	UNICOM 122.95
-----------------------	---	--	-------------------------	-------------------------



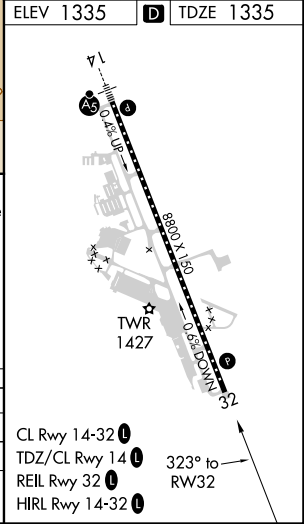
ELEV 1335 **D** TDZE 1335



9000	SUYRU	TULNE	CUTTR	VGSi and descent angles not coincident (VGSi Angle 3.00/TCH 50). Procedure Turn NA
tr 323°				
				ERBAW 285° 4600
				FILPU 4600
				GP 3.00° TCH 50
				3.8 NM 4.7 NM 2.5 NM

CATEGORY	A	B	C	D
RNP 0.15 DA		1609-1	274 (300-1)	
RNP 0.30 DA		1661-1	326 (400-1)	

AUTHORIZATION REQUIRED



- CL Rwy 14-32 **0**
- TDZ/CL Rwy 14 **0**
- REIL Rwy 32 **0**
- HIRL Rwy 14-32 **0**

NW-1, 08 SEP 2022 to 06 OCT 2022

NW-1, 08 SEP 2022 to 06 OCT 2022