

LOC/DME I-GFK 109.1 Chan 28	APP CRS 174°	Rwy Idg TDZE Apt Elev	7351 843 845
---	------------------------	-----------------------------	---

LOC BC RWY 17R

GRAND FORKS INTL (GFK)

DME or ADF or RADAR required.

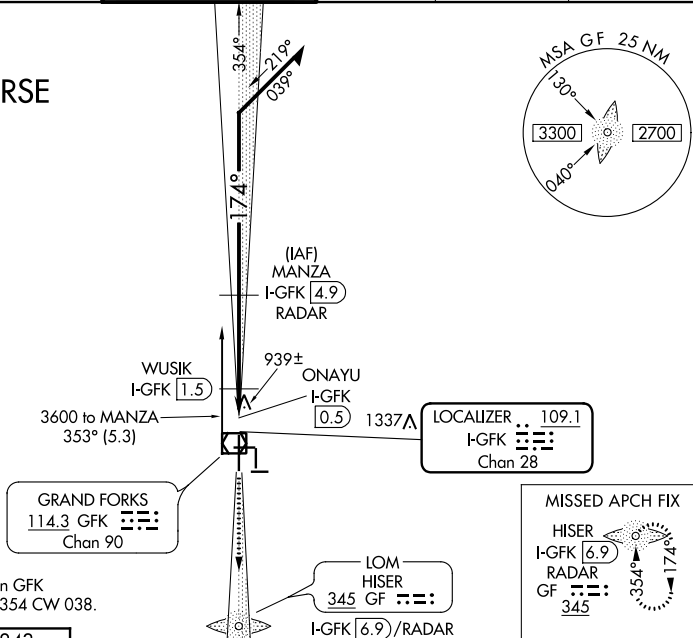
When local altimeter setting not received, use Crookston altimeter setting and increase all MDA 80 feet; increase S-17R Cat C visibility $\frac{1}{4}$ SM and Circling Cat C visibility $\frac{1}{4}$ SM. Increase WUSIK fix minimums S-17R Cat C visibility and Circling Cat C visibility $\frac{1}{4}$ SM.

MISSED APPROACH: Climb to 2600 on I-GFK south course (174°) to HISER LOM/I-GFK 6.9 DME/RADAR and hold.

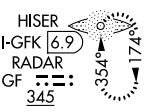
ATIS 119.4	GRAND FORKS APP CON * 118.1 318.1	GRAND FORKS TOWER * 118.4 (CTAF) 350.35	GND CON 124.575	CLNC DEL 135.725	UNICOM 122.95
----------------------	---	---	---------------------------	----------------------------	-------------------------

BACK COURSE

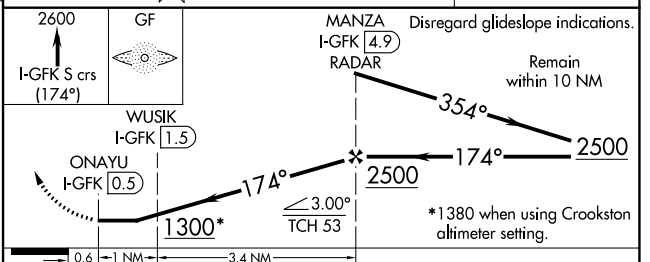
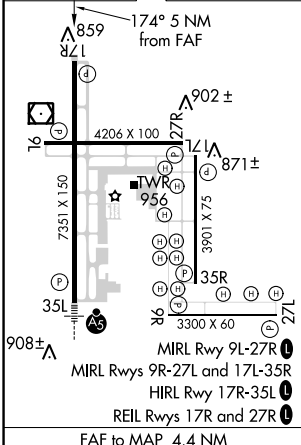
A1476



MISSED APCH FIX



ELEV 845	TDZE 843
-----------------	-----------------



CATEGORY	A	B	C	D
S-17R	1300-1	457 (500-1)	1300-1 $\frac{3}{8}$ 457 (500-1 $\frac{3}{8}$)	1300-1 $\frac{1}{2}$ 457 (500-1 $\frac{1}{2}$)
CIRCLING	1300-1	455 (500-1)	1400-1 $\frac{1}{2}$ 555 (600-1 $\frac{1}{2}$)	1400-2 555 (600-2)
WUSIK FIX MINIMUMS				
S-17R	1200-1 357 (400-1)			1200-1 $\frac{1}{4}$ 357 (400-1 $\frac{1}{4}$)
CIRCLING	1260-1 415 (500-1)	1300-1 455 (500-1)	1400-1 $\frac{1}{2}$ 555 (500-1 $\frac{1}{2}$)	1400-2 555 (600-2)

FAF to MAP 4.4 NM					
Knots	60	90	120	150	180
Min:Sec	4:24	2:56	2:12	1:46	1:28

NC-1, 08 SEP 2022 to 06 OCT 2022

NC-1, 08 SEP 2022 to 06 OCT 2022