

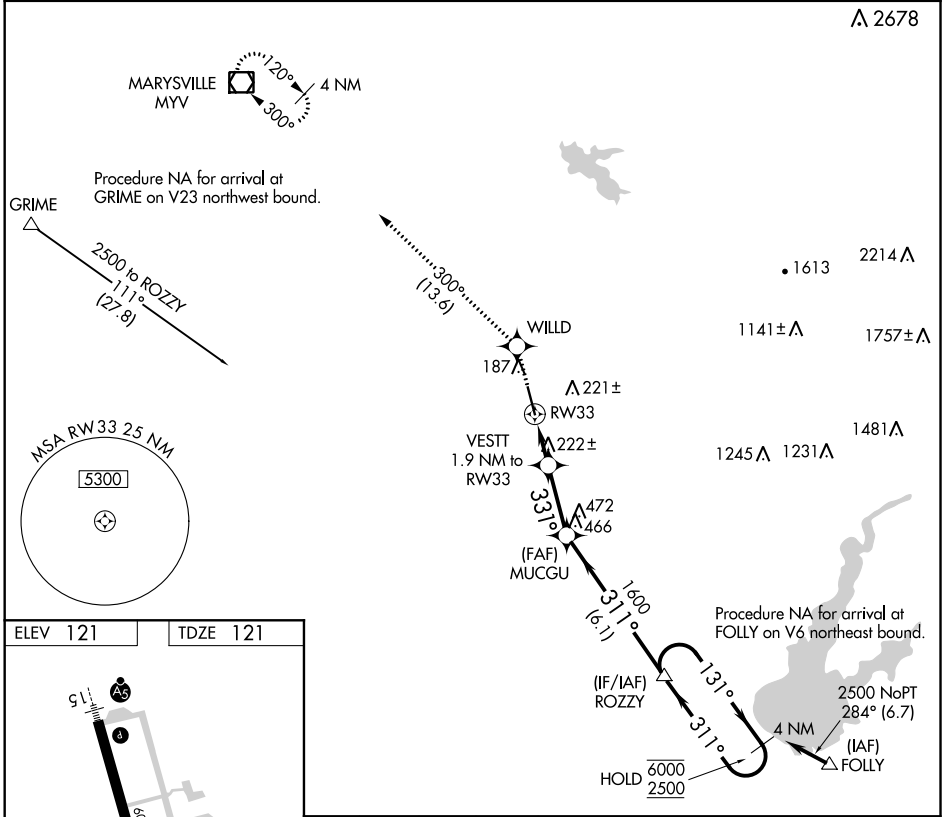
APP CRS	Rwy Idg	6001
331°	TDZE	121
	Apt Elev	121

RNAV (GPS) RWY 33

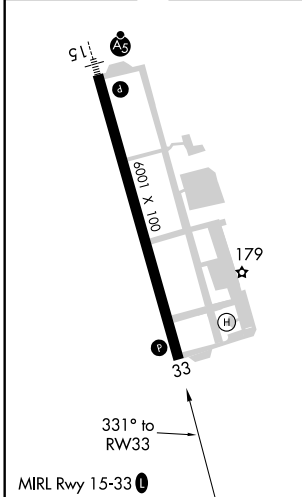
LINCOLN RGNL/KARL HARDER FLD (LHM)

RNP APCH.	MISSED APPROACH: Climb to 2000 direct WILLD and on track 300° to MYV VOR/DME and hold.
<p>▼ Rwy 33 helicopter visibility reduction below ¼ SM NA. When local altimeter setting not received, use Beale AFB altimeter setting and increase all MDA 40 feet, and increase LNAV Cat C/D visibility ½ mile. VDP NA with Beale AFB altimeter setting.</p>	

AWOS-3 124.25	NORCAL APP CON 125.4 259.1	UNICOM 123.0 (CTAF) 0
-------------------------	--------------------------------------	---------------------------------



ELEV 121	TDZE 121
----------	----------



2000	WILLD	tr 300°	MYV	ROZZY	4 NM Holding Pattern
VESTT 1.9 NM to RW33		3.04° TCH 31	MUCCGU	1600	131° 6000
0.9 NM to RW33		760	331°	311°	2500
0.9 NM 1 NM 2.6 NM 6.1 NM					
CATEGORY	A	B	C	D	
LNAV MDA	480-1 359 (400-1)				

SW-2, 08 SEP 2022 to 06 OCT 2022

SW-2, 08 SEP 2022 to 06 OCT 2022